



1. 津堂城山古墳(藤井寺陵墓参考地)大阪府南河内郡美陵町津堂



2. 仁徳天皇陵 堺市大仙町



1. 応神天皇陵 大阪府羽曳野市誉田



2. 仲姫皇后陵 大阪府南河内郡美陵町沢田



1. 藁山古墳（応神陵陪冢）大阪府羽曳野市菅田



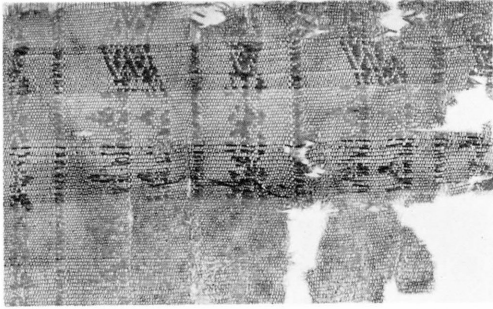
2. 雲部車塚古墳（雲部陵墓参考地）兵庫県多紀郡城東町東本庄



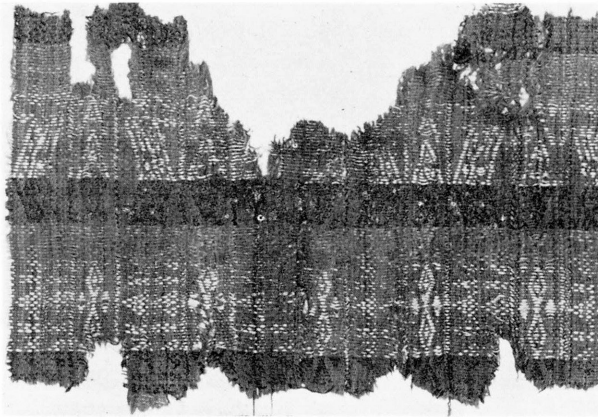
1. 巢山古墳 奈良県北葛城郡広陵町三吉



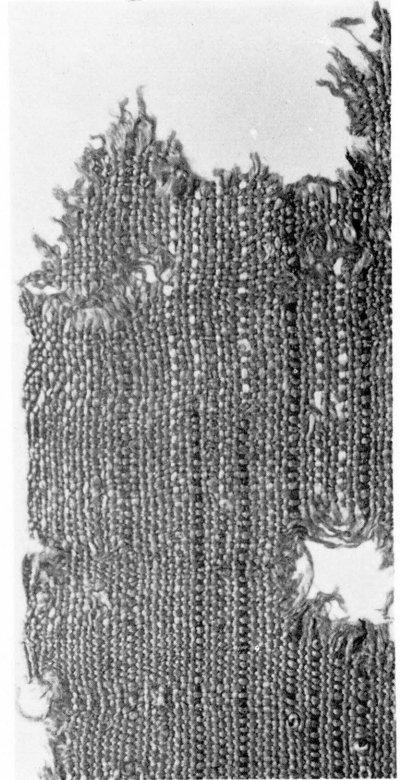
2. 磐之媛皇后陵 奈良市佐紀町  
(手前から磐之媛陵・小那辺・宇和那辺各陵墓参考地)



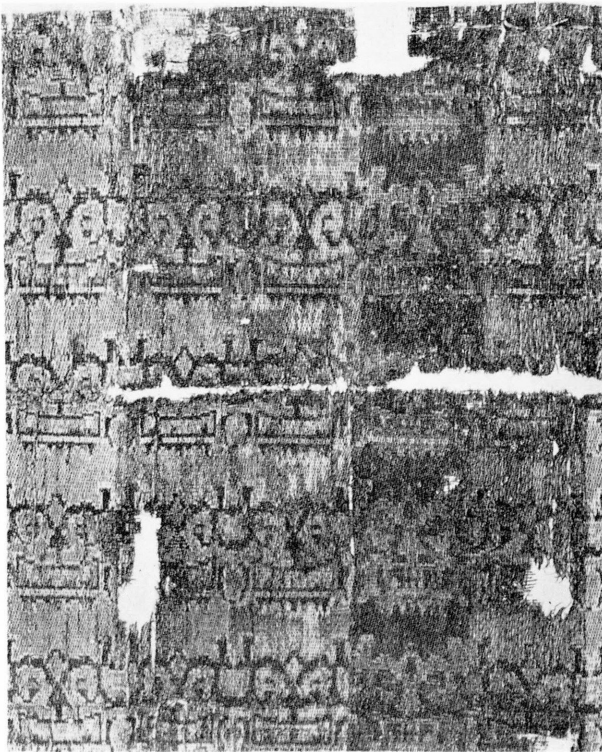
3 白地山菱文錦 1/1.5



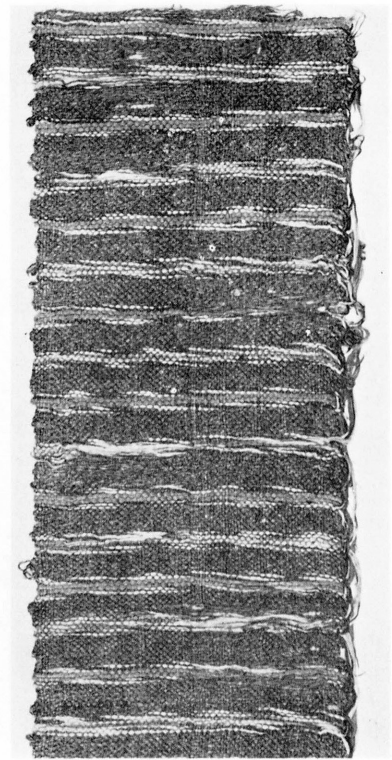
4 赤地山菱文錦 1/2



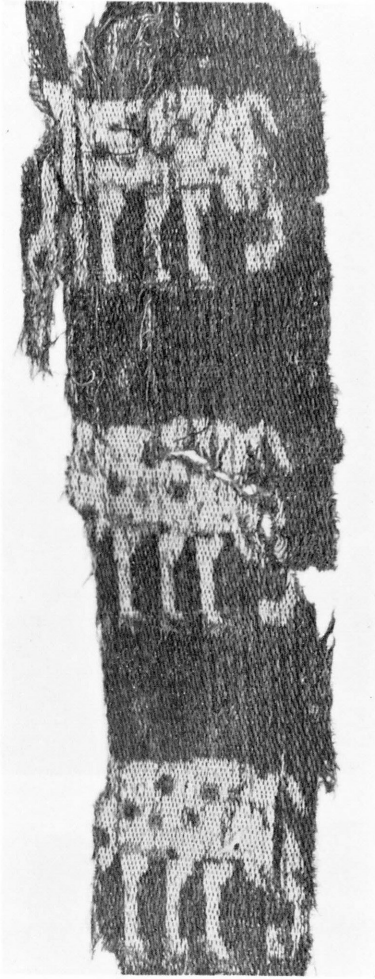
1 雑彩交織裂 1/1



5 獅嚙文長斑錦 1/2



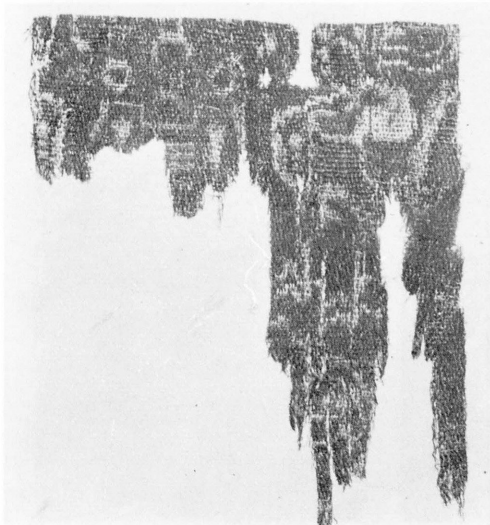
2 雑色段織裂 1/1.5



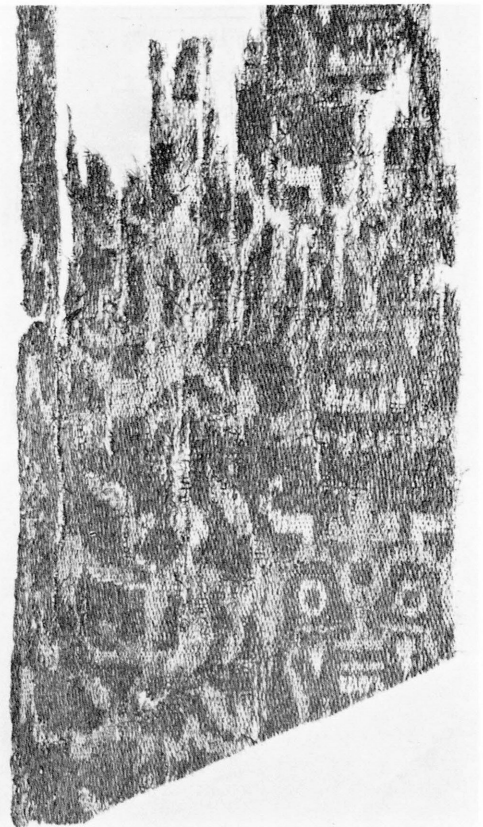
7 赤紫地象形錦 1/1



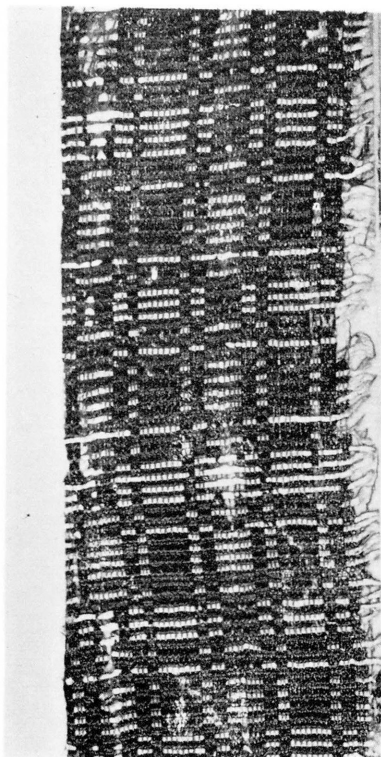
6 浅紅地雲山文錦 1/1



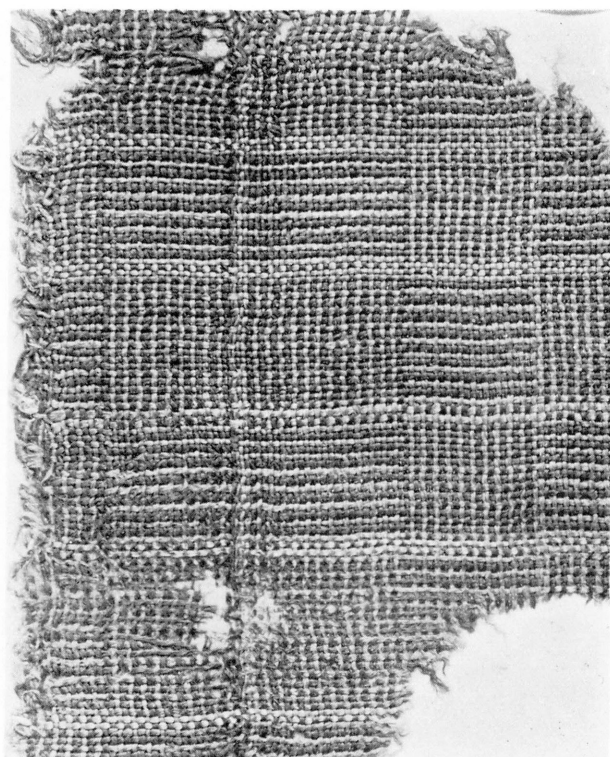
9 赤紫地獅嘯鳳凰文錦 3/4



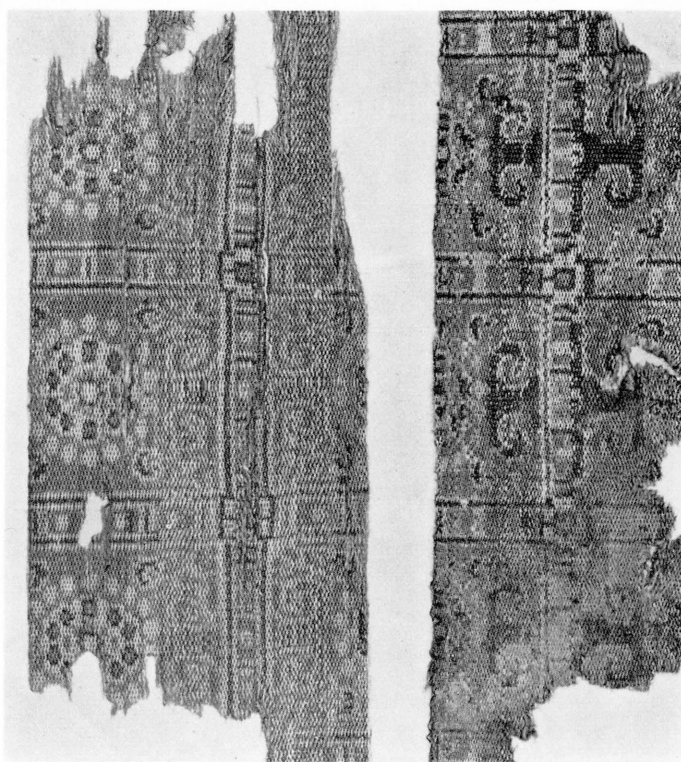
8 赤紫地獅嘯天人文錦 3/4



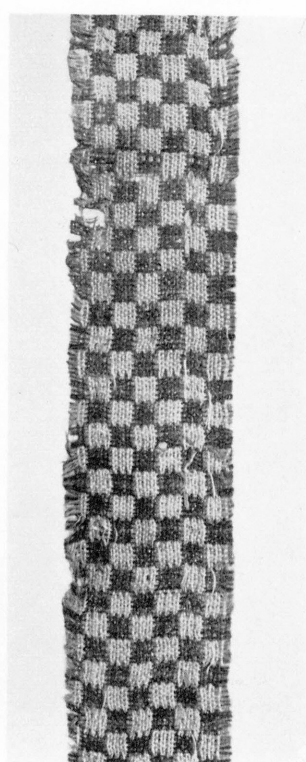
11 石罨文雑色交織裂 1/1



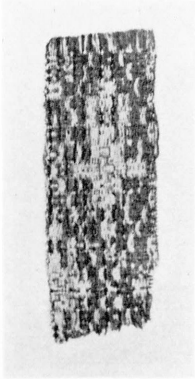
10 石罨文赤黄交織裂 1/1



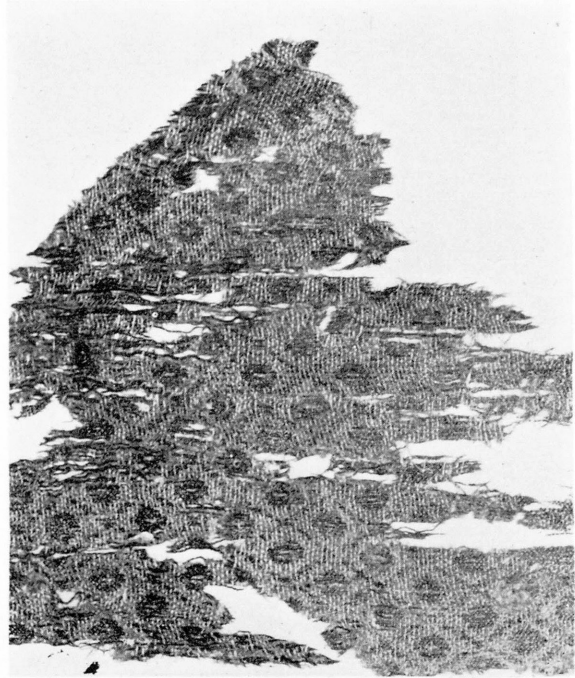
13 格子花文蜀江錦 1/1



12 小罨文風通 1/1 ←経



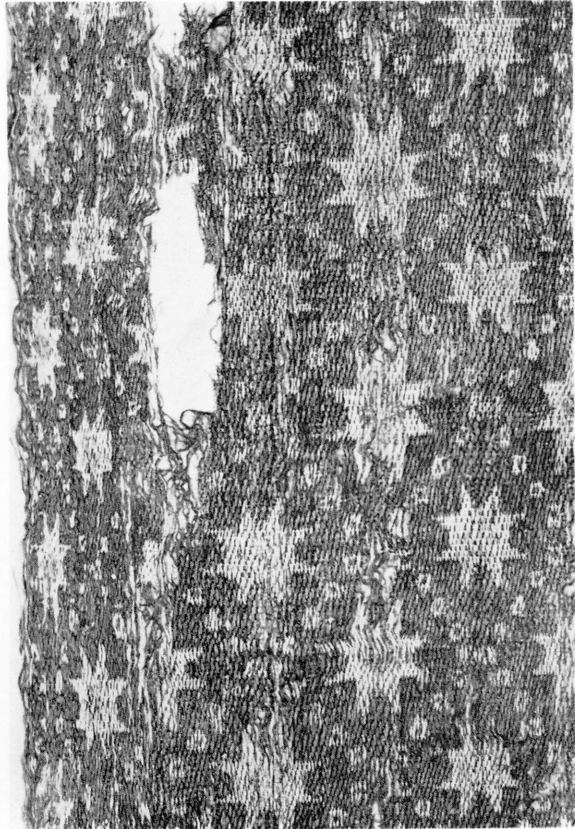
15 縹地襪花文錦 1/1



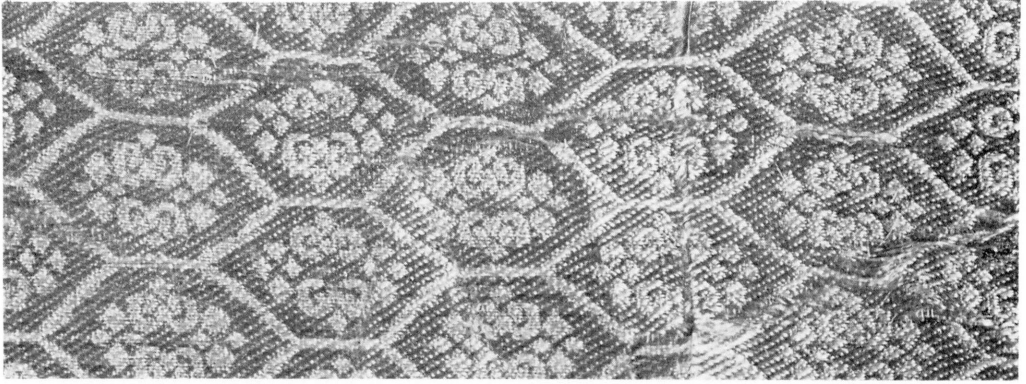
14 緑地襪=目交文風通 1/1



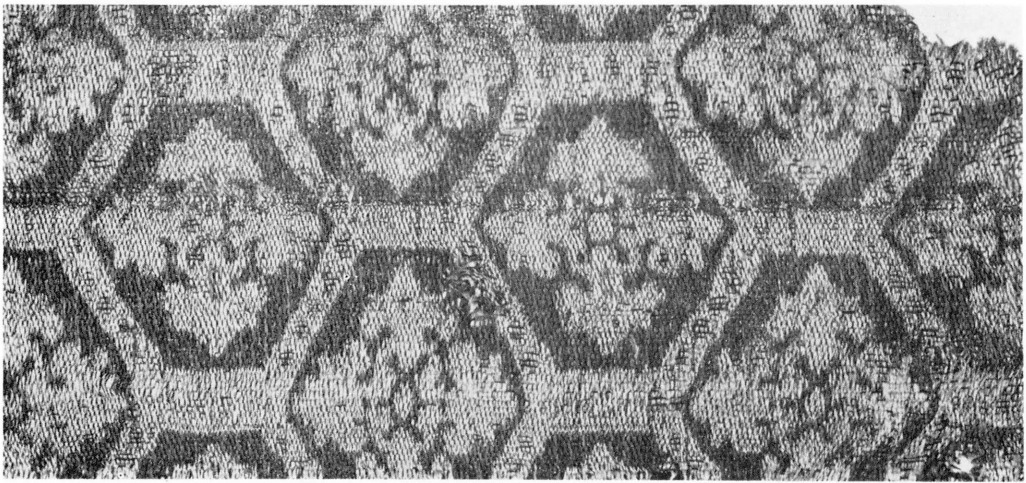
17 紫地唐草襪四花文錦 1/2



16 赤紫地目交襪花文錦 1/1



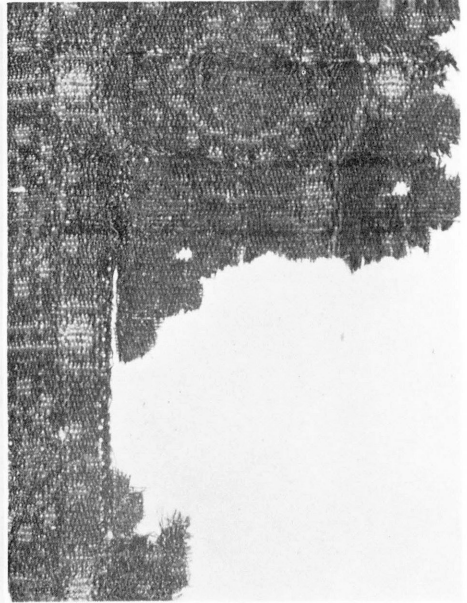
18 赤地亀甲花文錦 1/1



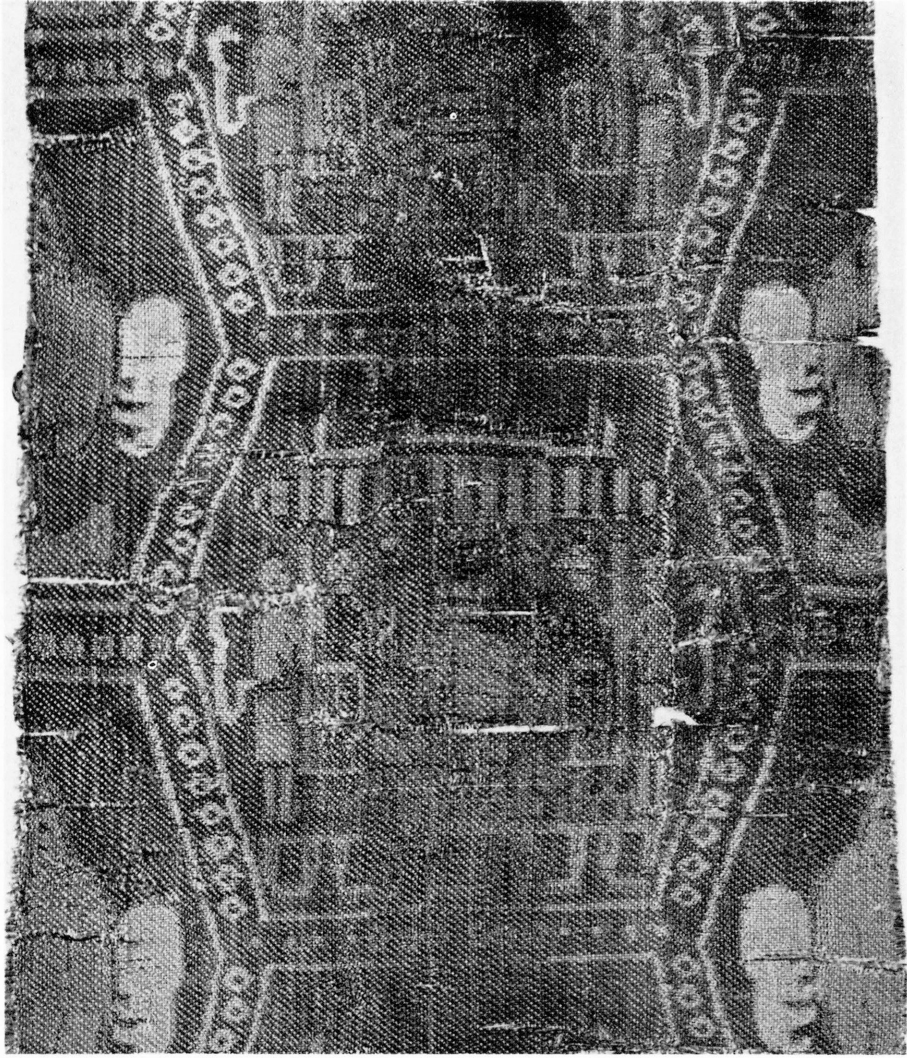
20A 紫地亀甲花文錦 (経錦) 1/1



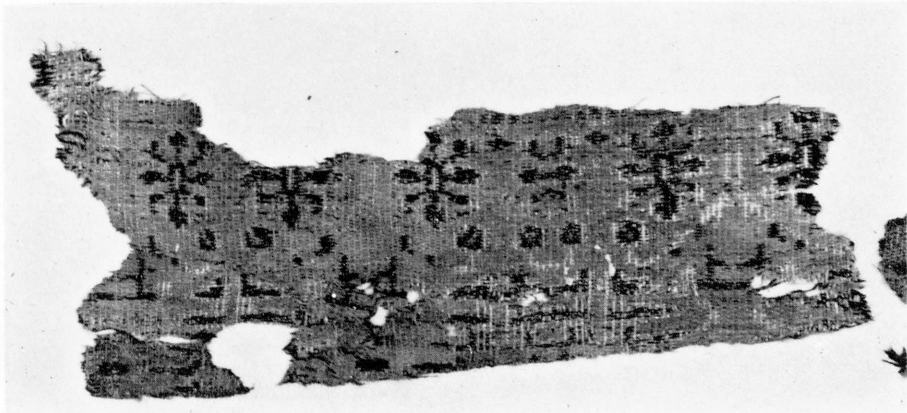
20B 紫地亀甲花文錦 (緯錦) 1/1.5



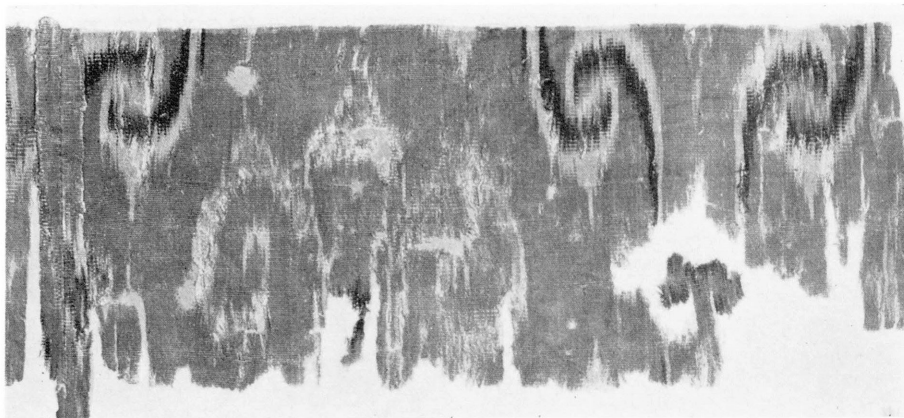
19 赤紫地亀甲連珠文錦 1/1



21 紫地亀甲佞殿文錦 1/1.5



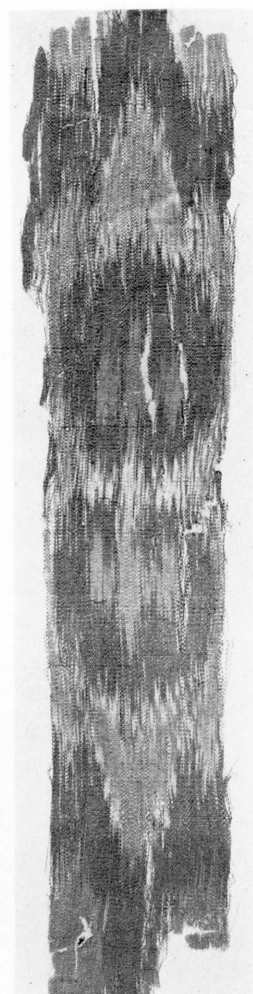
22 亀甲花文蜀江錦 1/5 ←経



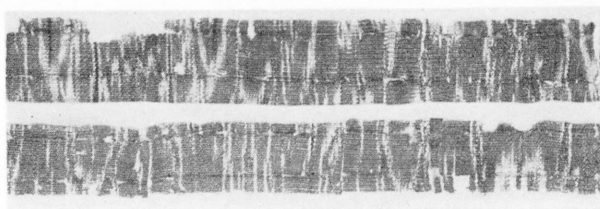
23 赤地絣錦 1/2



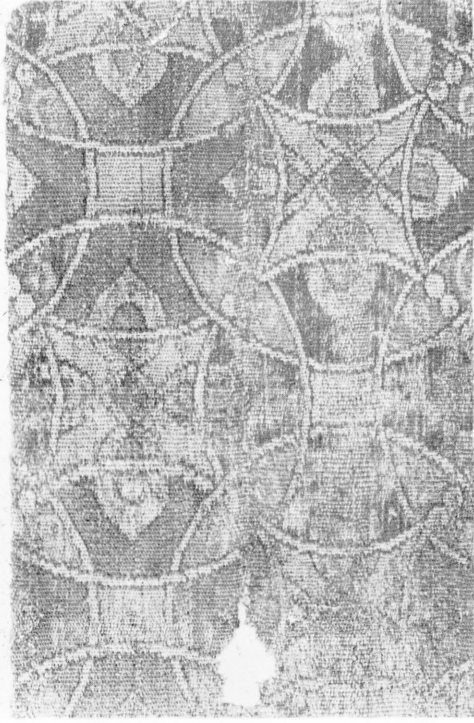
24B 紫地絣錦 1/2



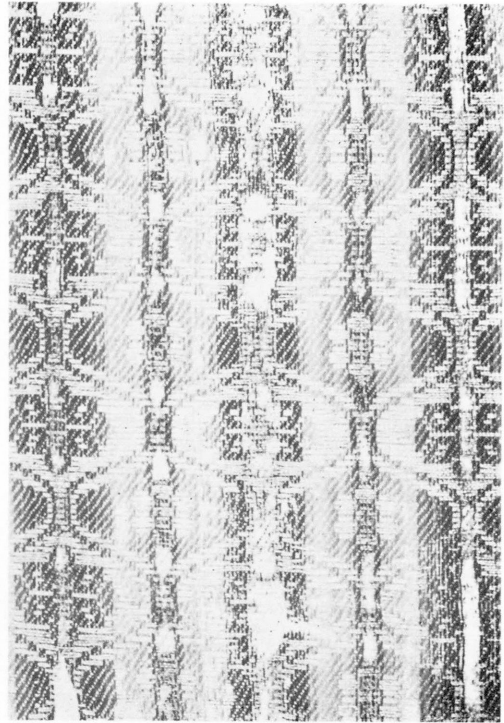
24A 紫地絣錦 1/2



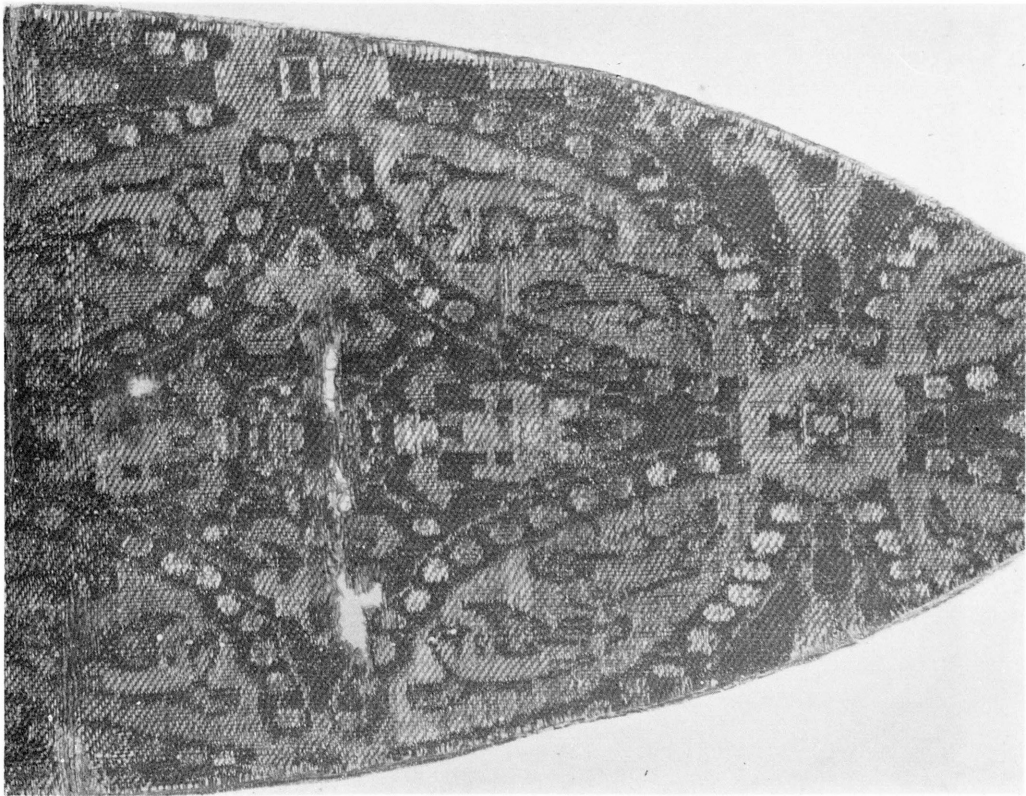
25 赤地絣錦 1/2



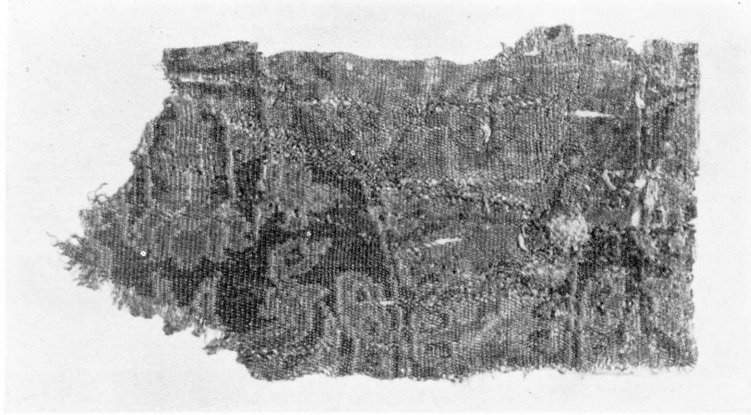
27 七宝花盤輪違花文錦 1/1.5



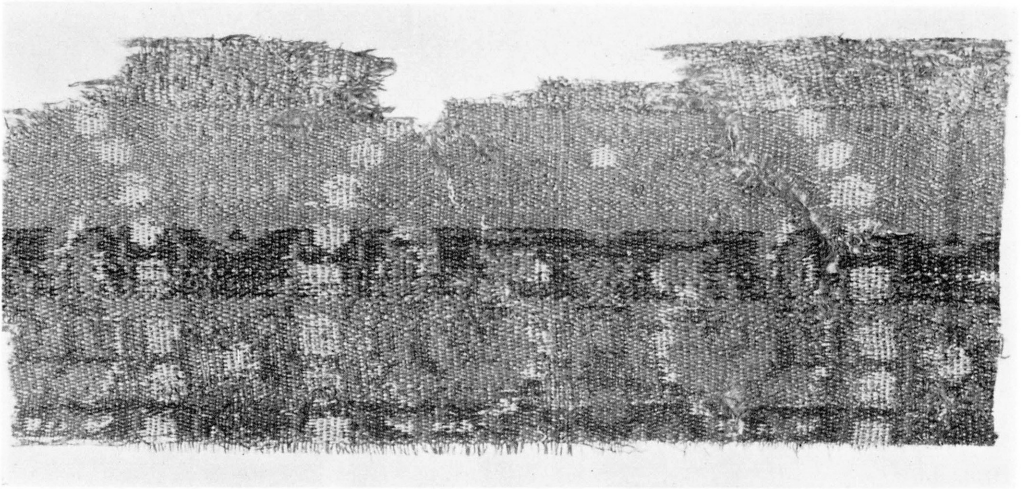
26 花立涌文風通 1/1



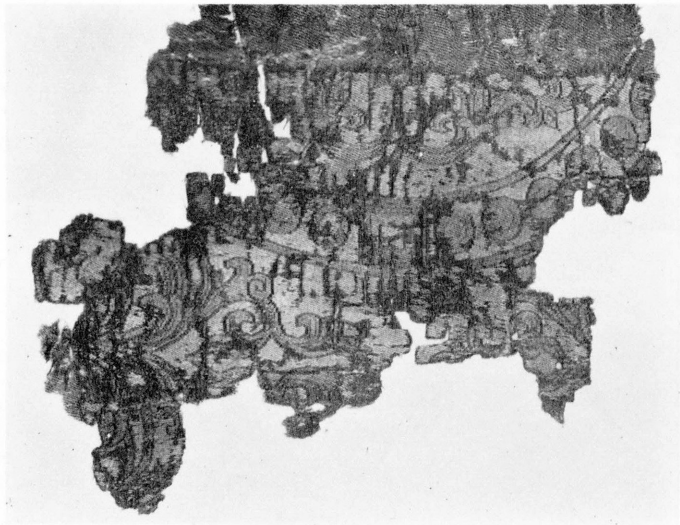
28 紫地七宝花鳥文錦 3/4 ←経



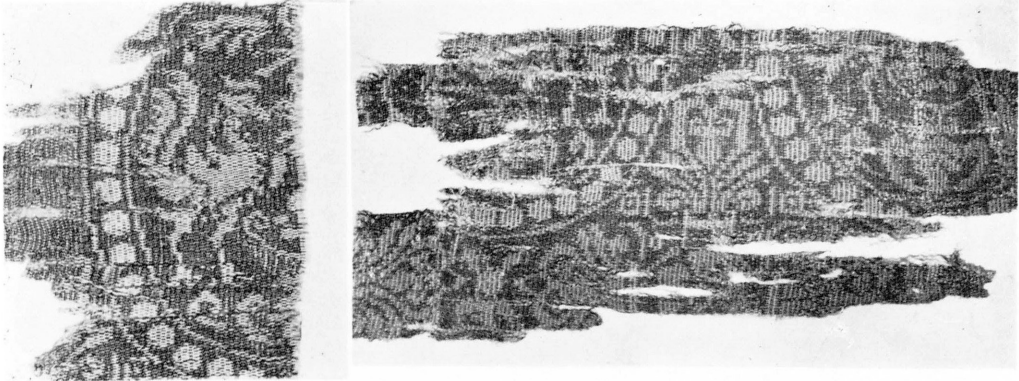
29 獅鳳円文蜀江錦 1/1 ←経



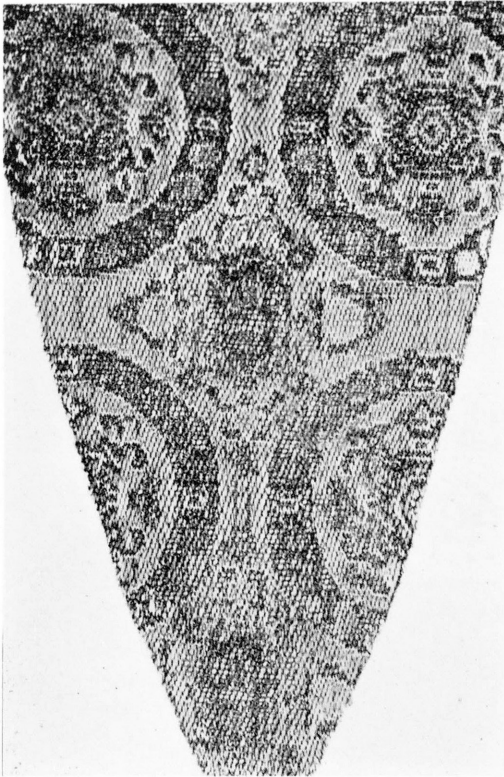
30 双鳳連珠文錦 1/1 ←経



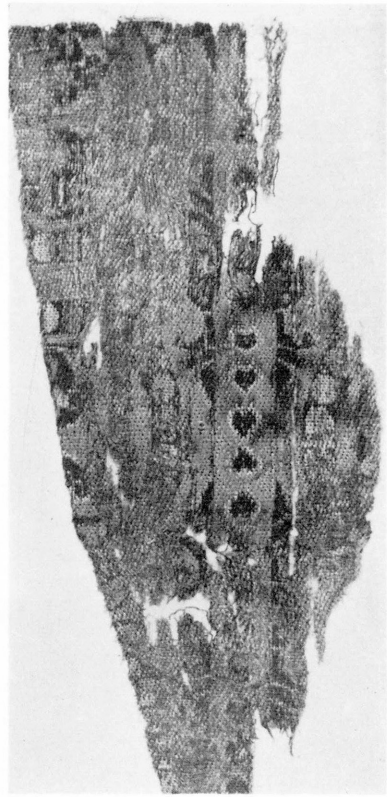
32 赤地双鳳連珠文錦 1/2 ←経



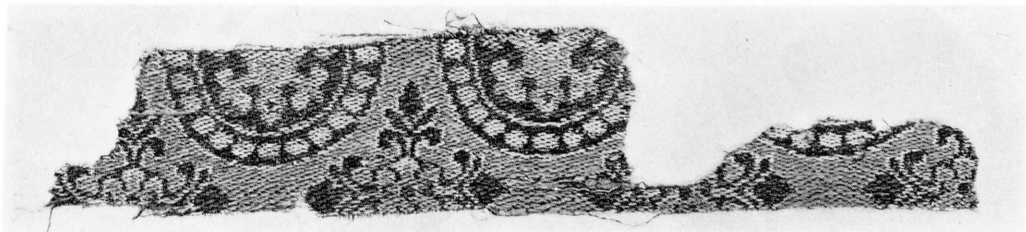
31 紫地双鳳連珠文錦 1/1 ←経



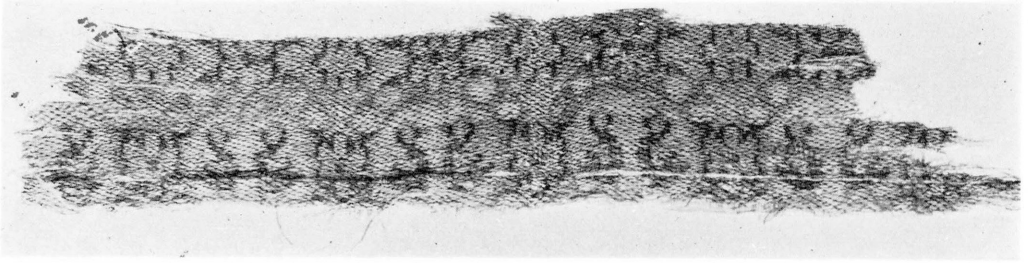
34 赤地連珠花文錦 1/1.5



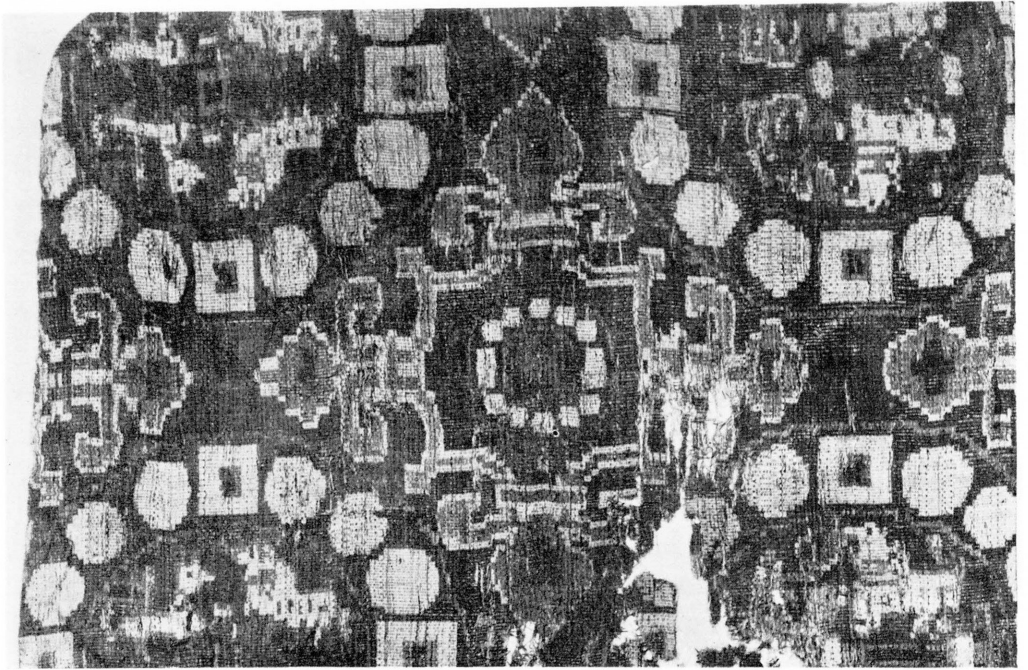
33 赤地双鳥連珠文錦 1/1



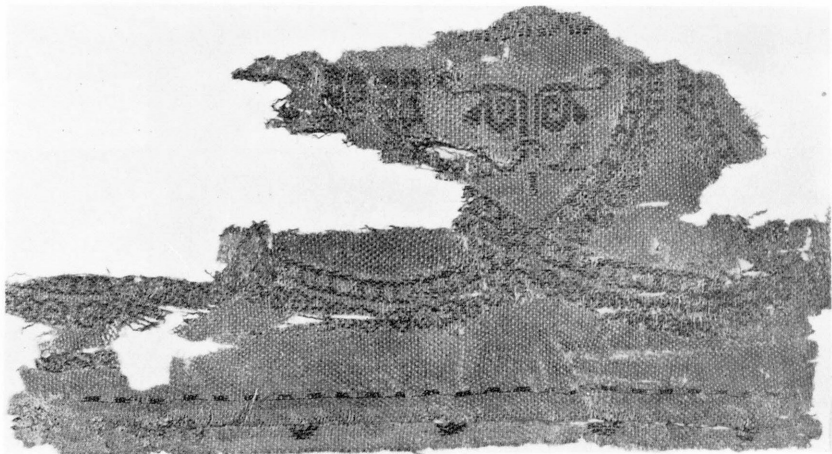
35 赤地連珠花文錦 1/1 ←経



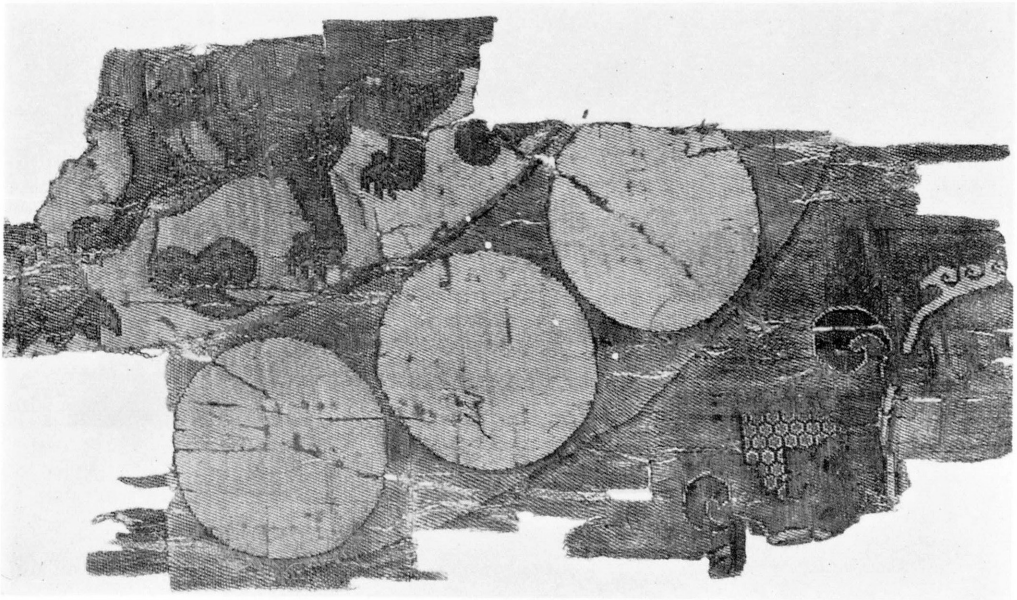
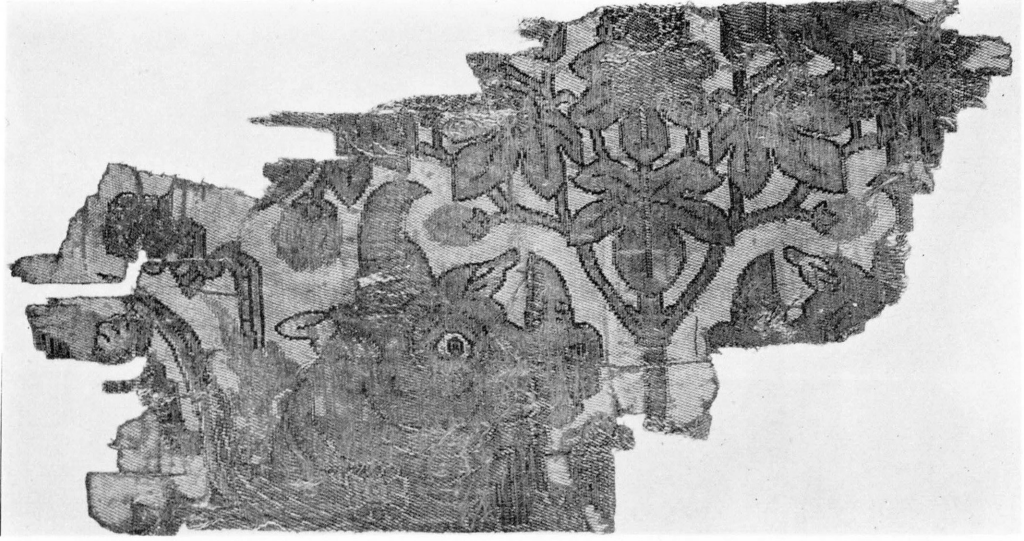
36 白茶地小双鳥連珠文錦 1/1 ←経



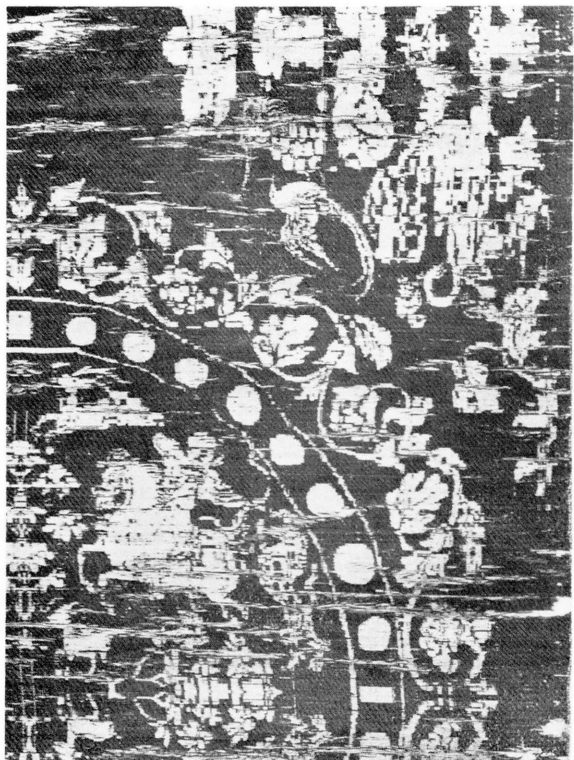
37 赤紫地鳥獸連珠文錦 1/3



38 茶地連珠花獅子文錦 1/1.5



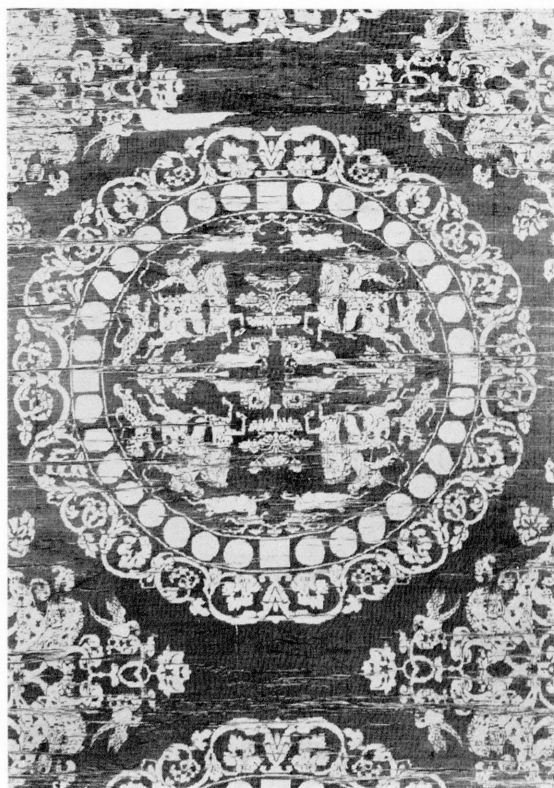
39 茶地犀連珠文錦（上・中主文部  $\frac{1}{2}$ 、下副文部  $\frac{1}{1.5}$ ）



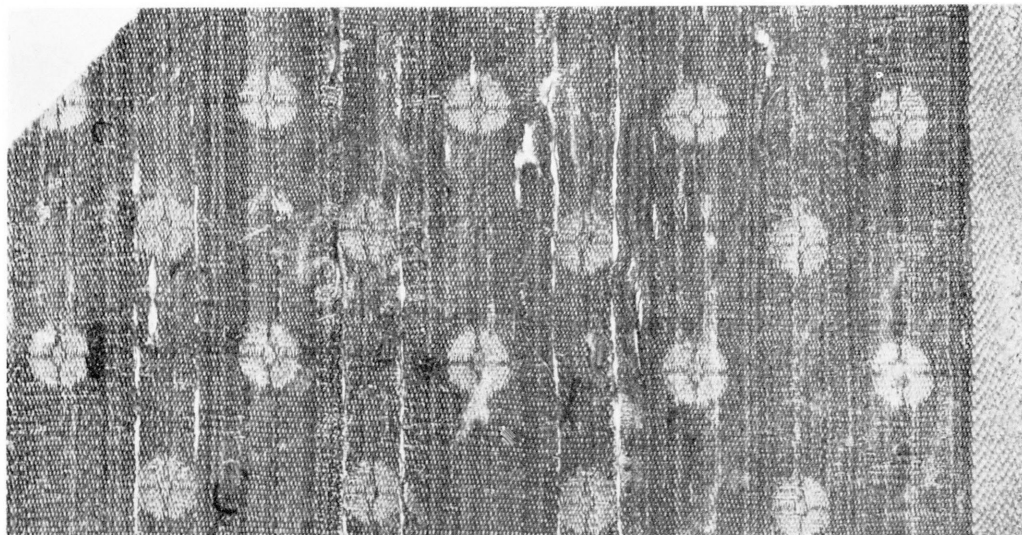
42 縹地符狐連珠文錦 1/4



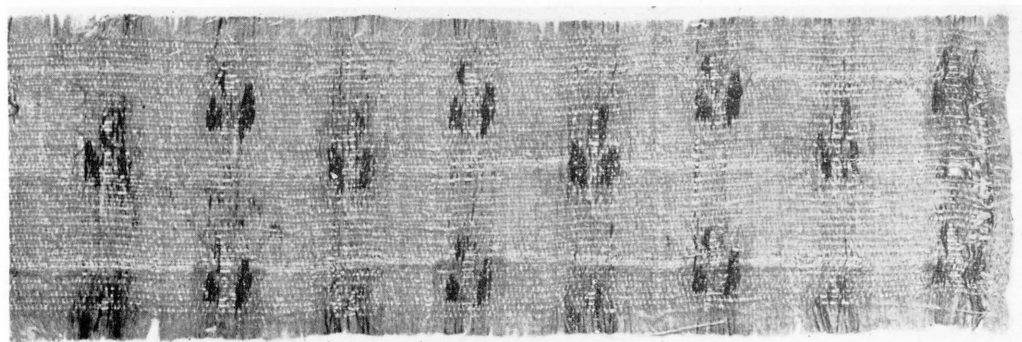
40 紫地鷲連珠文錦 1/1.5



41 緑地符狐連珠文錦 1/8



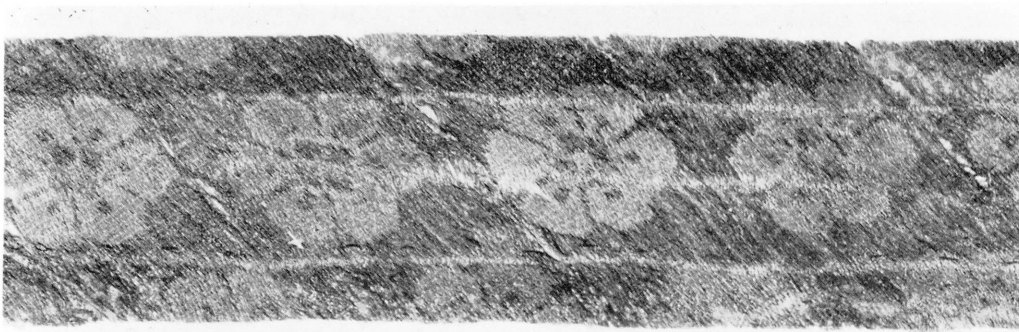
43 縹地小花文錦 1/1



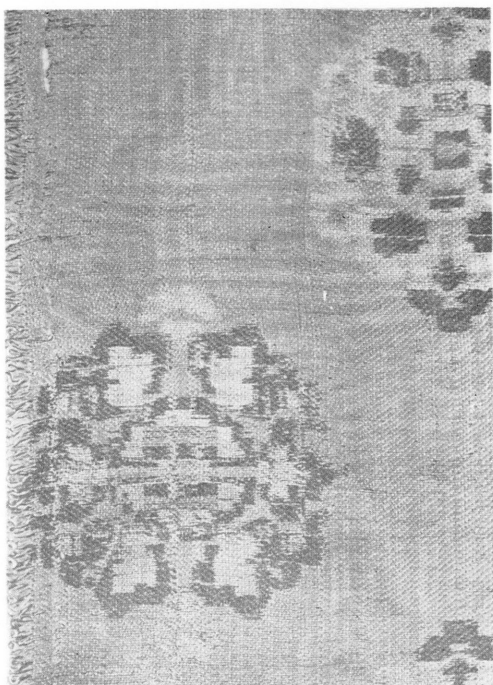
44 浅紅地小花文錦 1/1



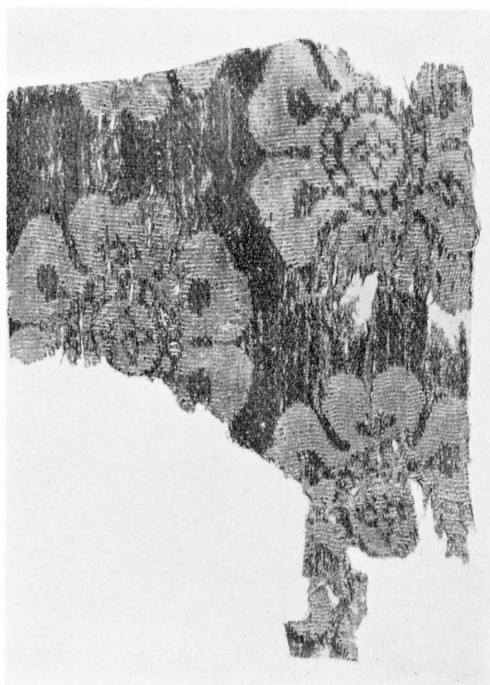
45 緑地八花文錦 1/1 経入



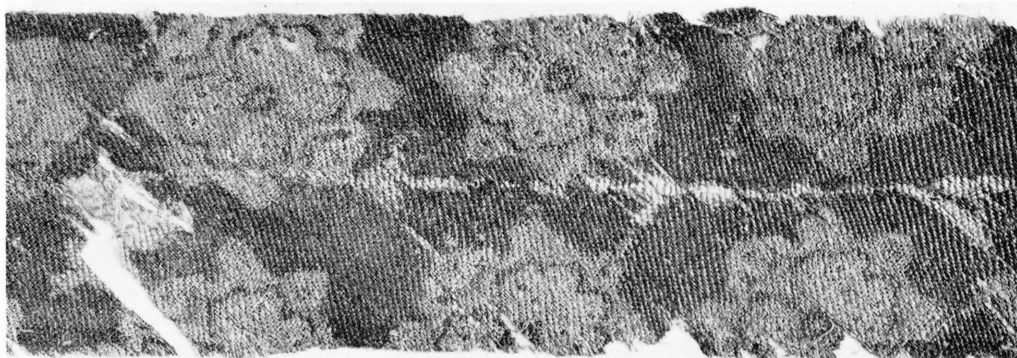
46 緑地花文錦 1/1 経 ↖



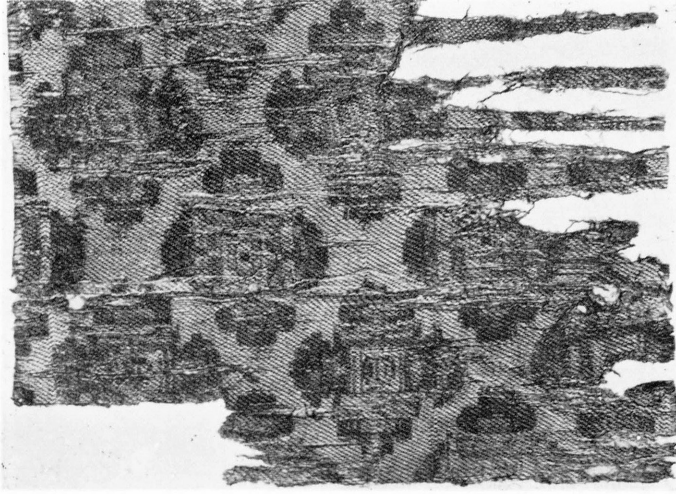
48 緑地花文錦 1/1.5



47 緑地花文錦 1/1.5



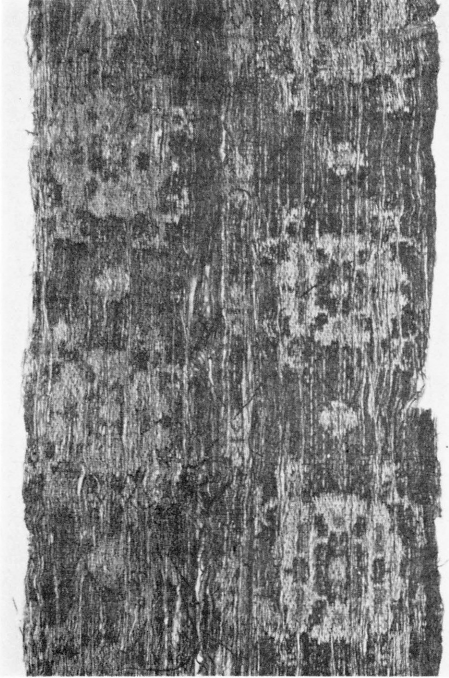
49 紫地花文錦 1/1 経 ↗



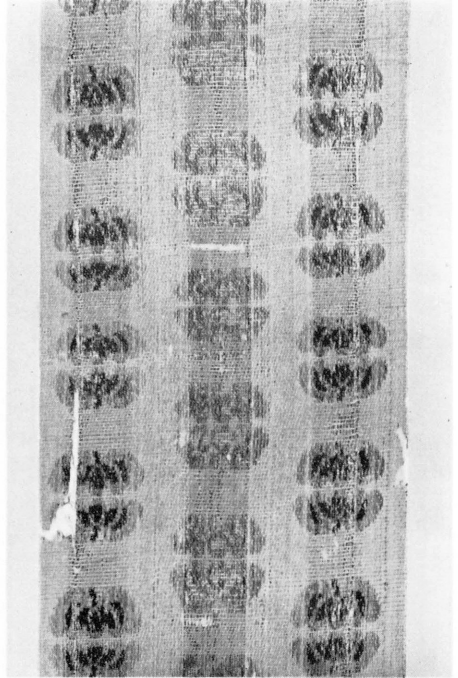
50 白地花文錦 1/1.5



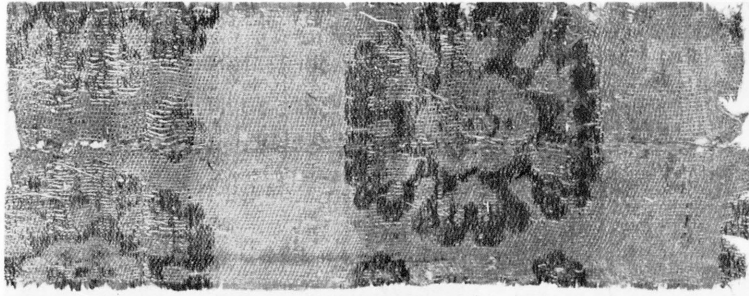
51 赤地草花丸文錦 1/1.5



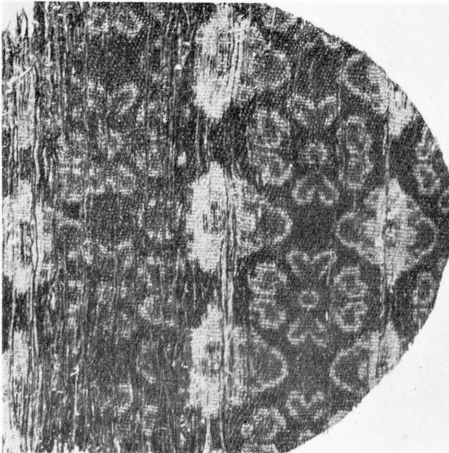
54 深縹地花文錦 1/1.5



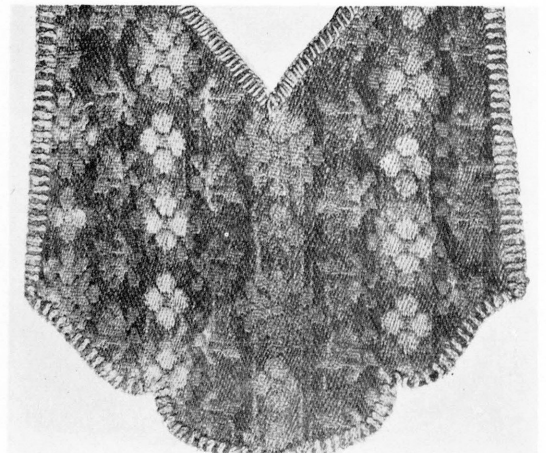
52 紅地花文錦 1/2



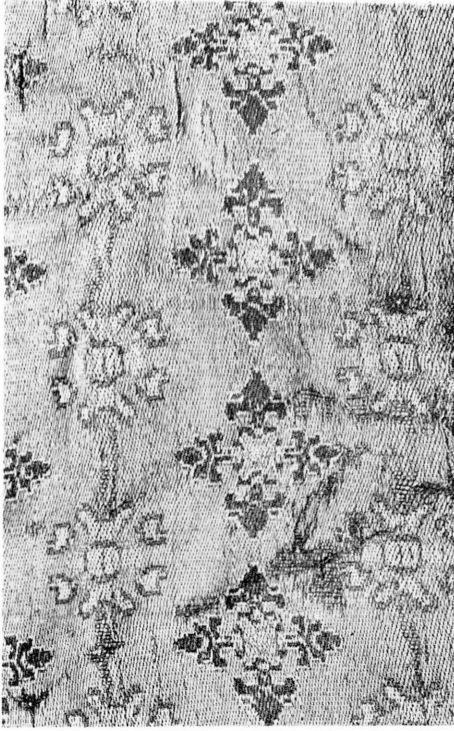
53 白茶地花文錦 1/1.5



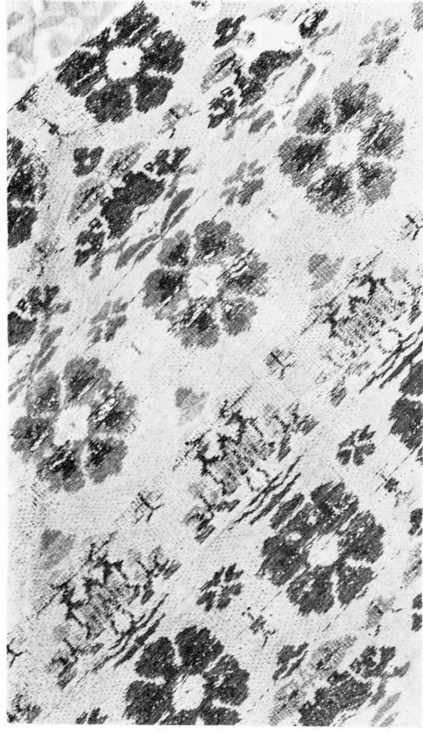
57 紫地小花文錦 1/1.5



55 緑地花文錦 1/1.5



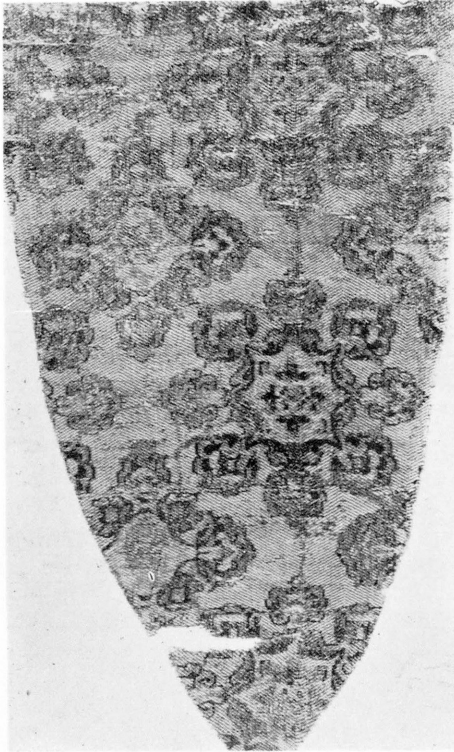
58 緋地花文錦 1/1.5



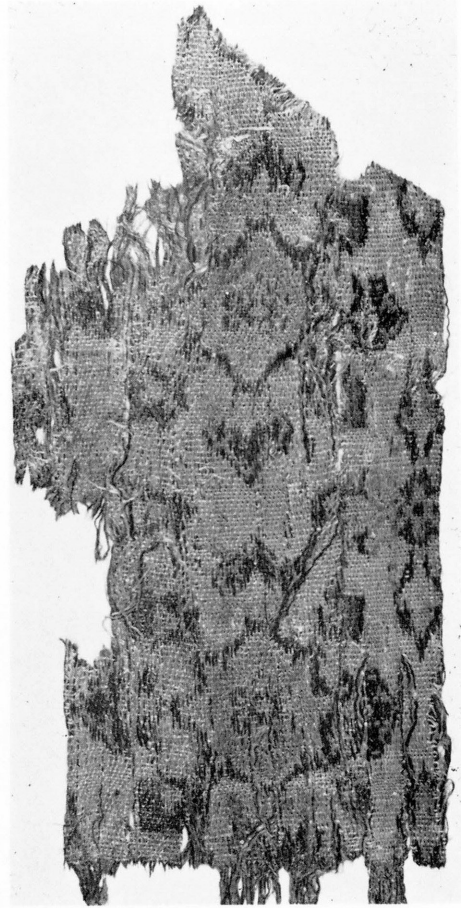
56 浅紅地花山岳文錦 1/1.5 経



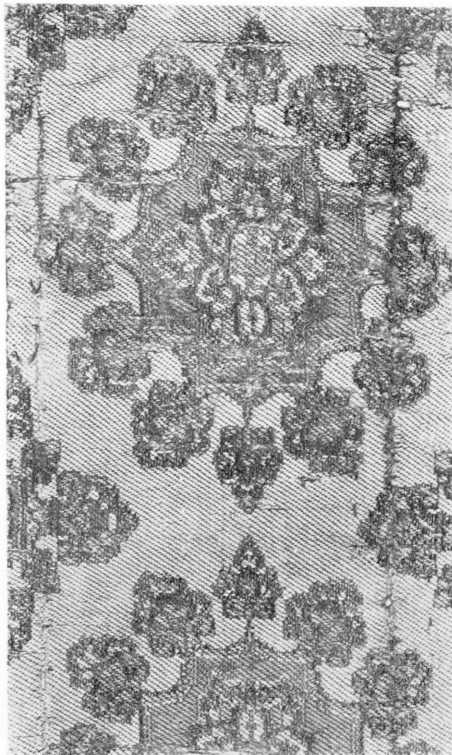
59 紫地花文錦 1/2.5 経



62 白茶地唐花文錦 1/1.5



60 浅緑地花文錦 1/1



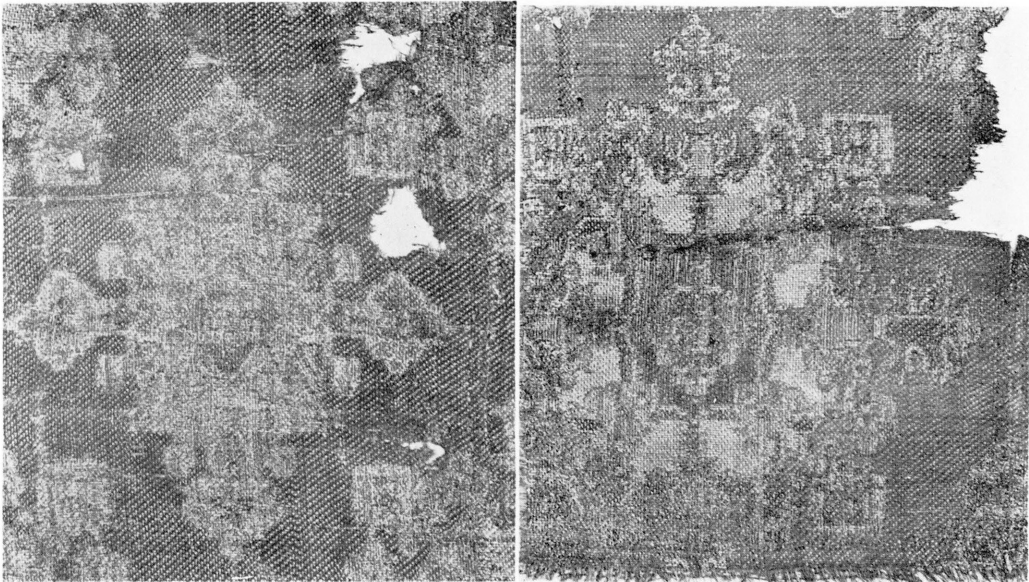
63 白地唐花文錦 1/1.5



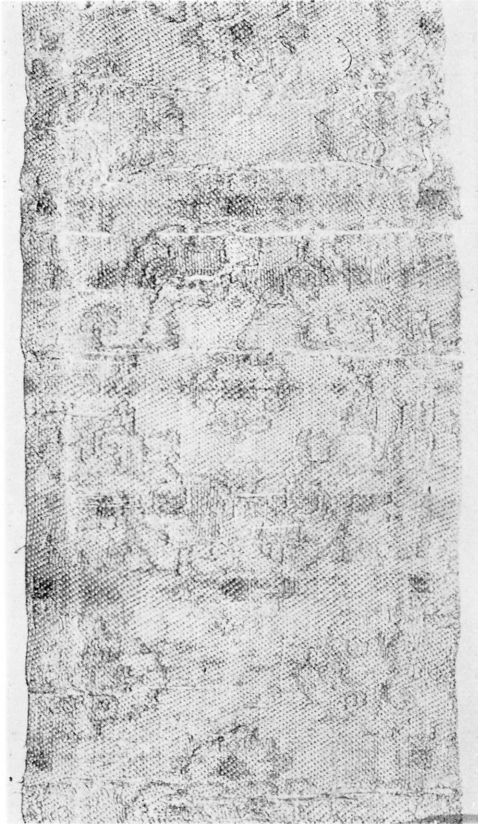
61 黄地唐花文錦 1/1.5



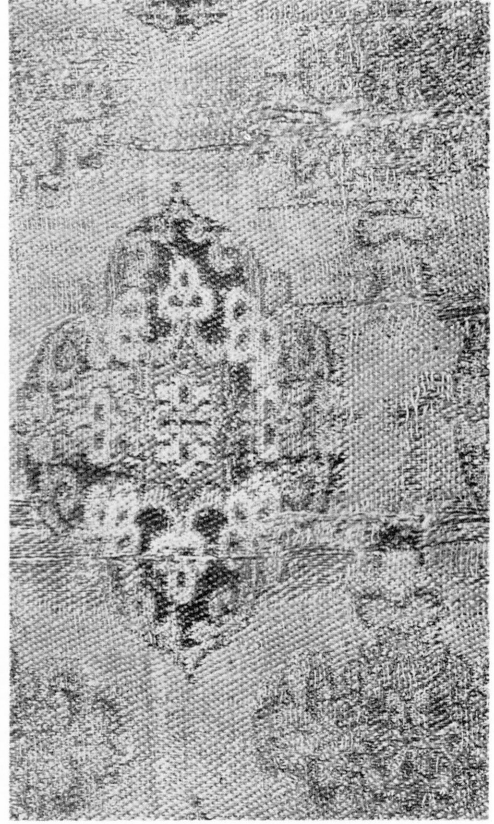
64 白地唐花文錦 1/1.5



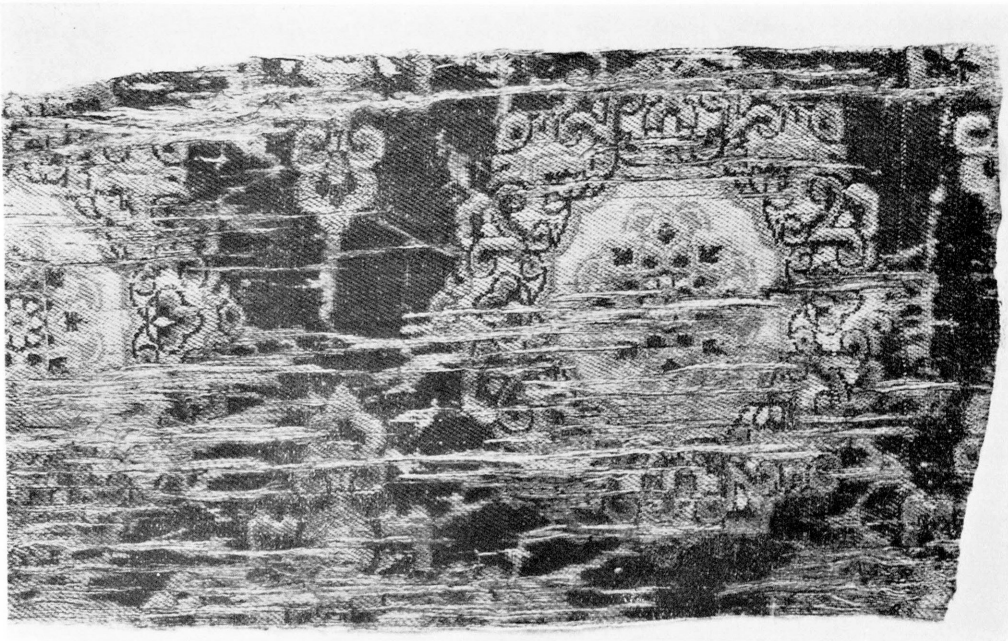
65 赤地唐花文錦（右主文部、左副文部）1/1.5



67 浅緑地唐花文錦 1/1.5



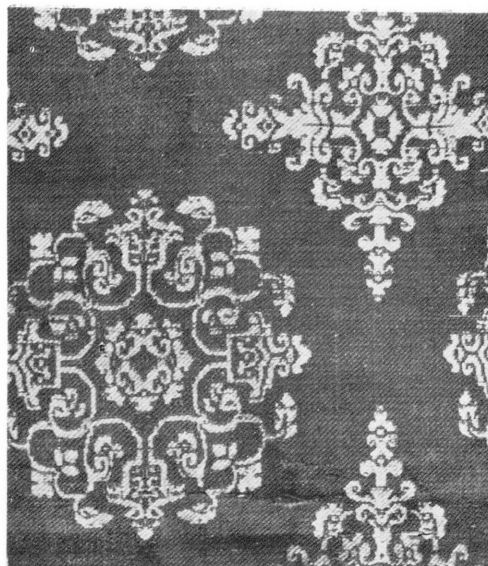
66 白地唐花文錦 1/1



68 深紫地唐花文錦 1/1.5



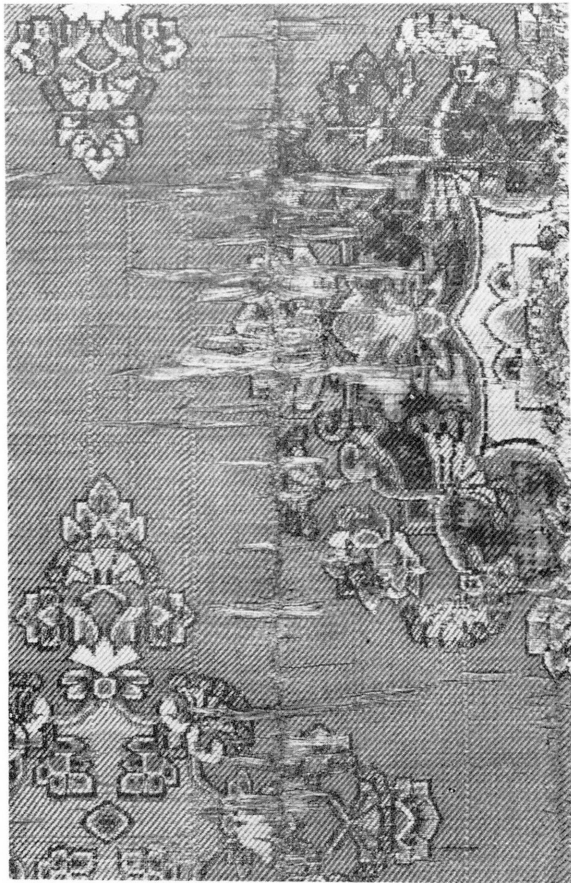
71 赤地蓮唐花文錦 1/1.5



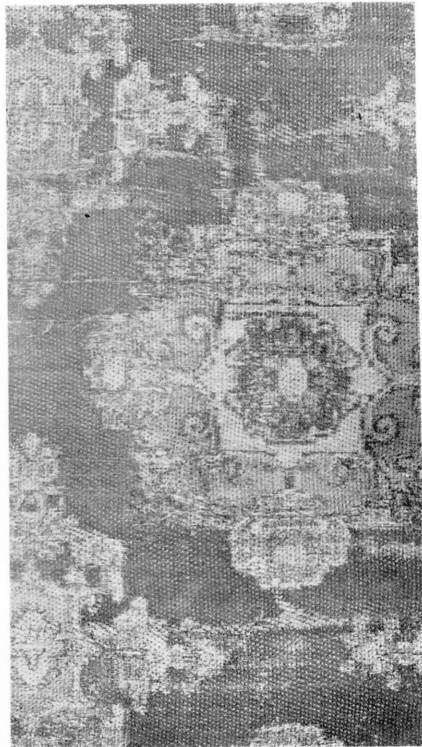
69 紫地唐花文錦 1/2



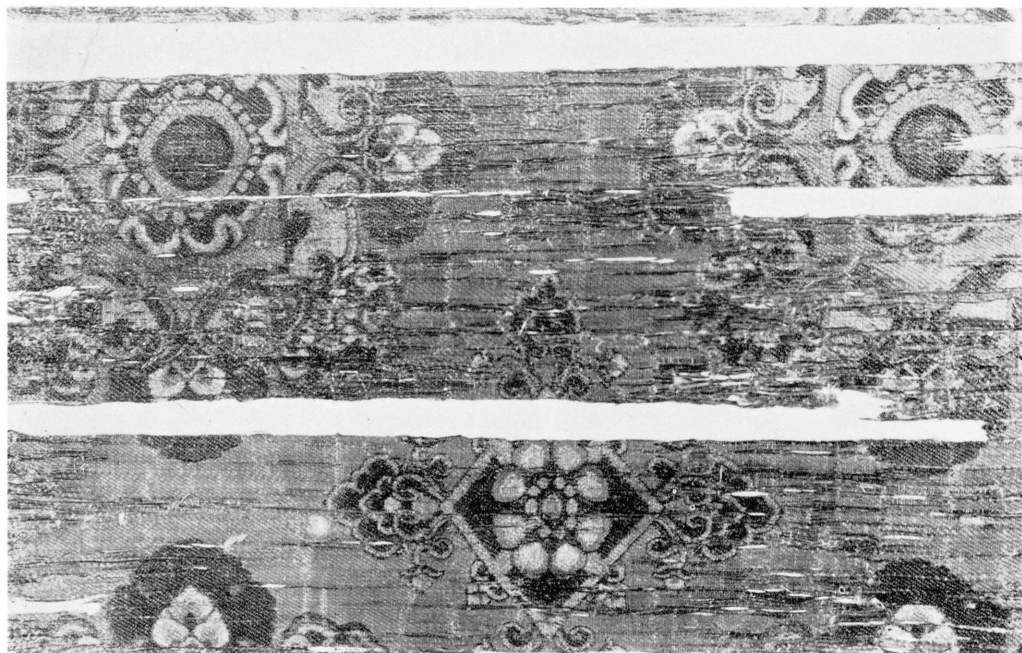
70 白地唐花文錦 1/2



73 赤地蓮唐花文錦 1/2



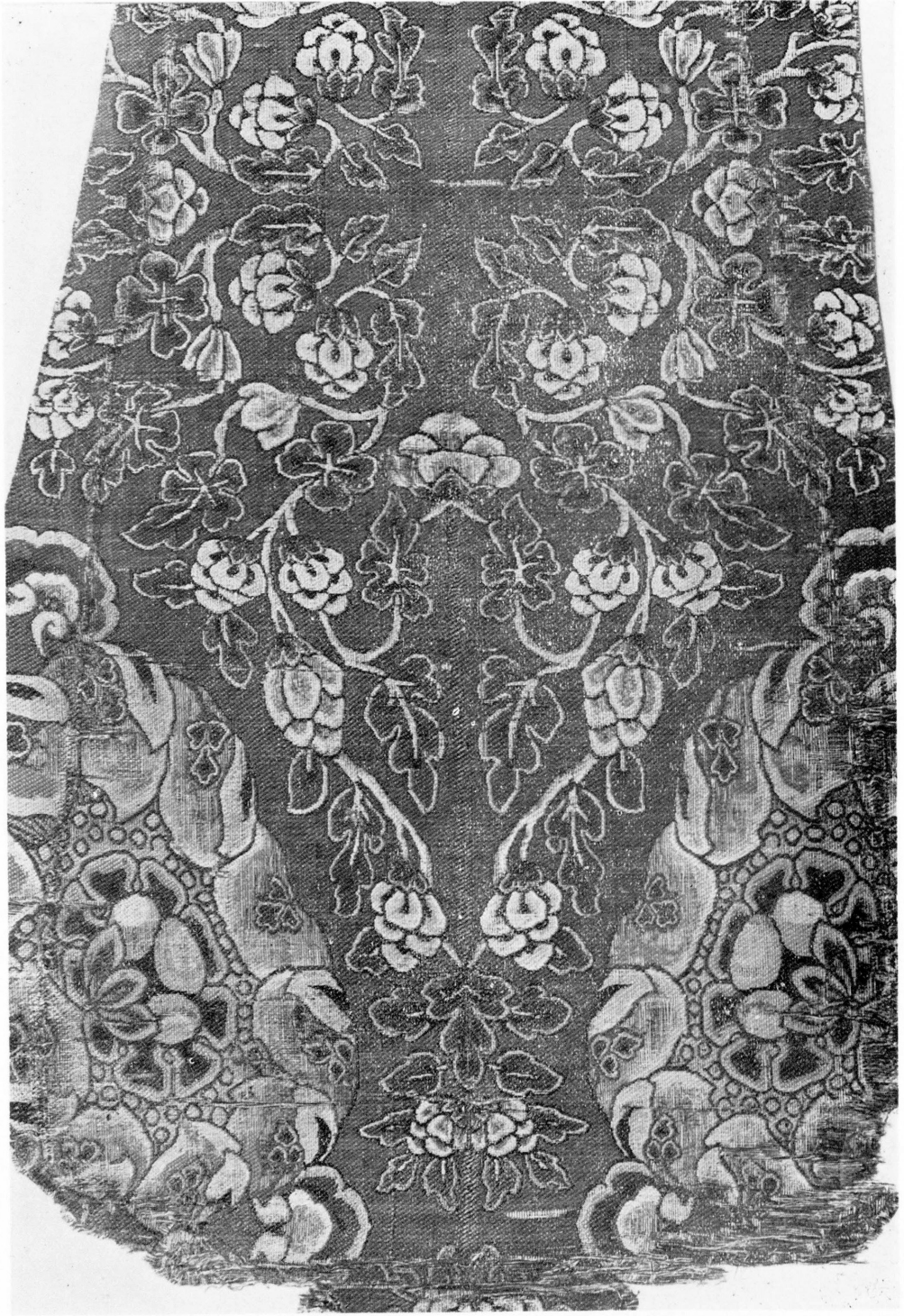
72 紫地蓮唐花文錦 1/1.5



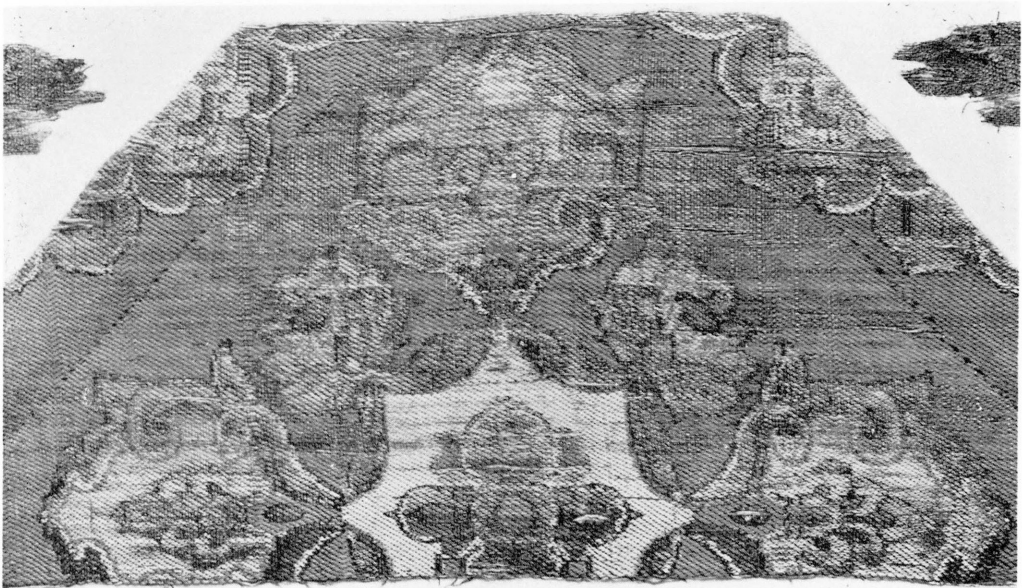
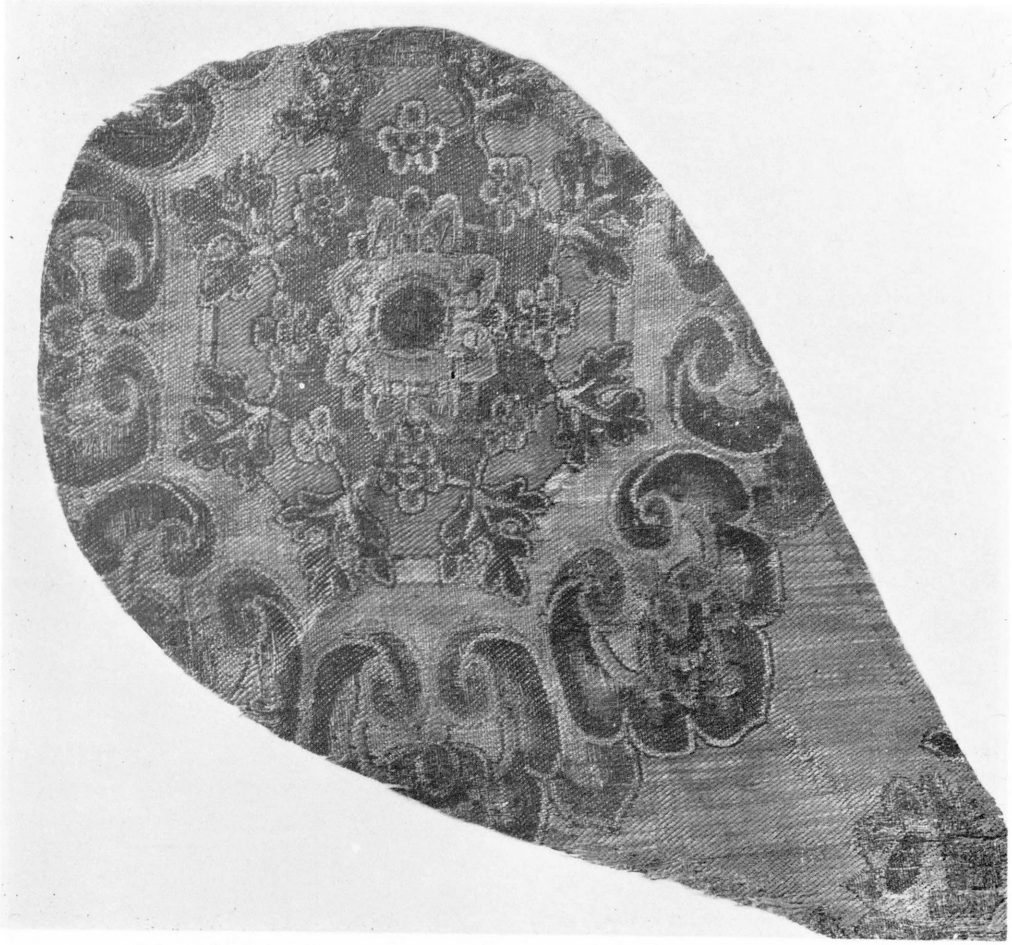
74 赤地蓮唐花文錦 1/2



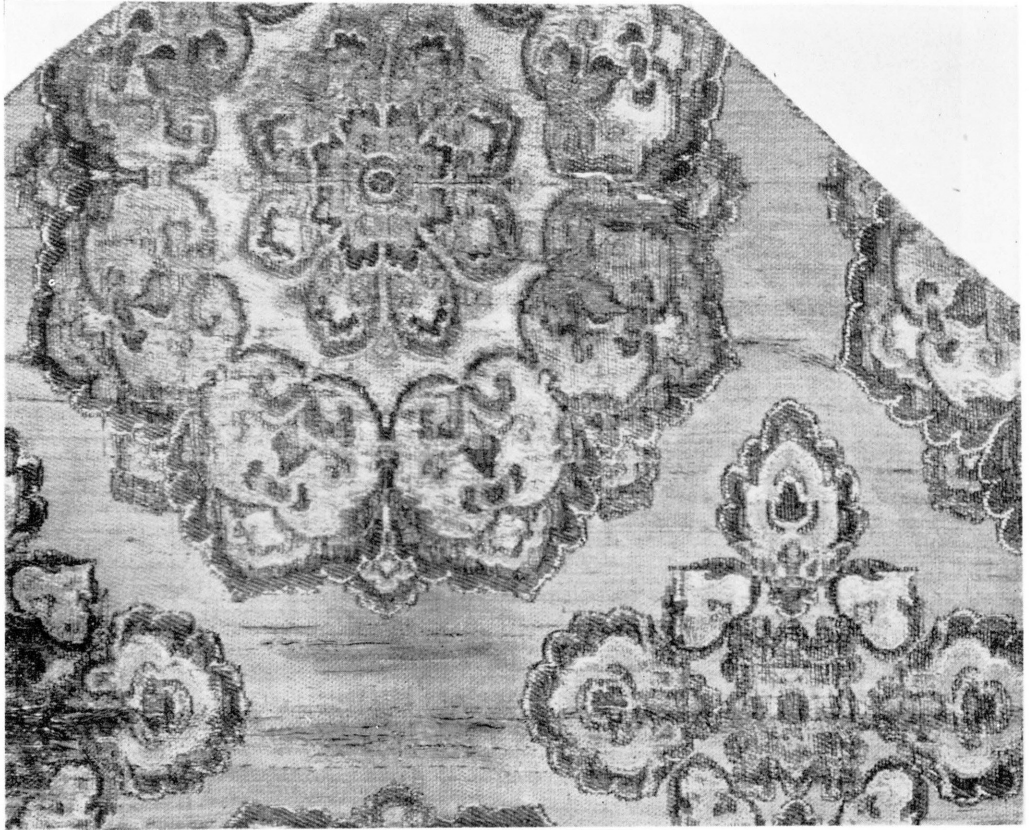
75A 浅縹地大唐花文錦（主文部） $\frac{1}{4}$



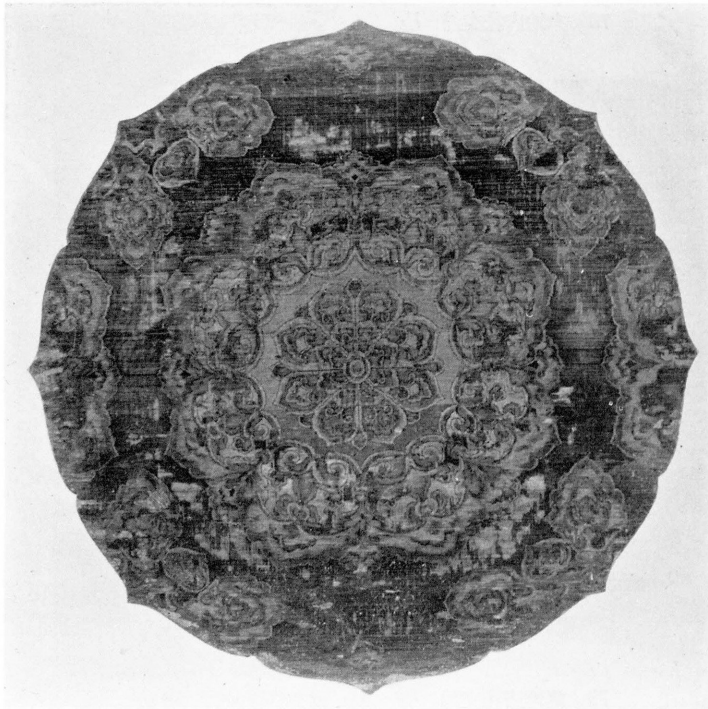
75B 浅縹地大唐花文錦（副文部） $\frac{1}{2}$



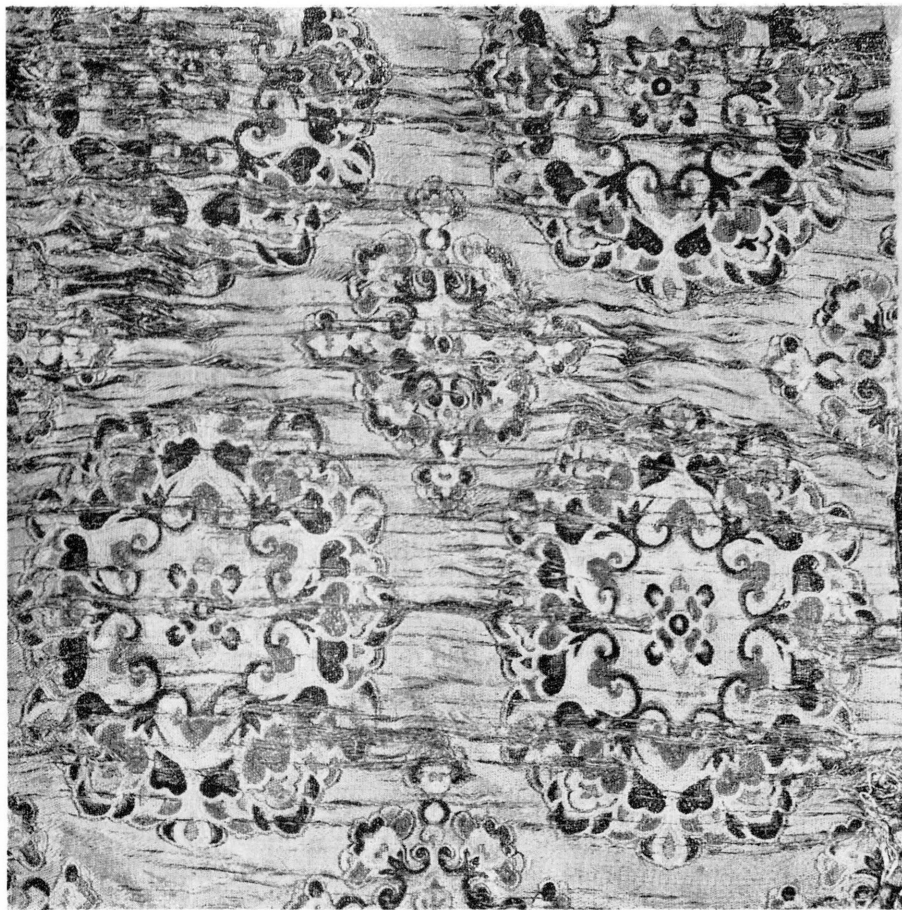
76 赤地唐花文錦（上主文部、下副文部） $\frac{1}{2}$



77A 赤地唐花文錦 1/2



77B 白地唐花文錦 1/5



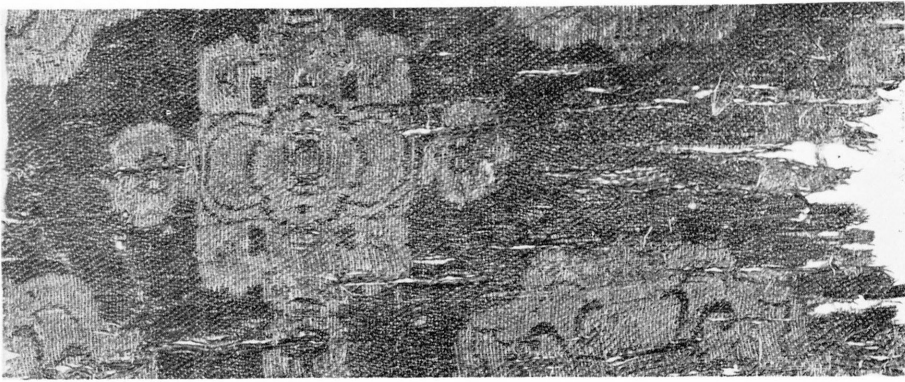
78 赤地唐花文錦 1/2



79 縹地唐花文錦 1/3



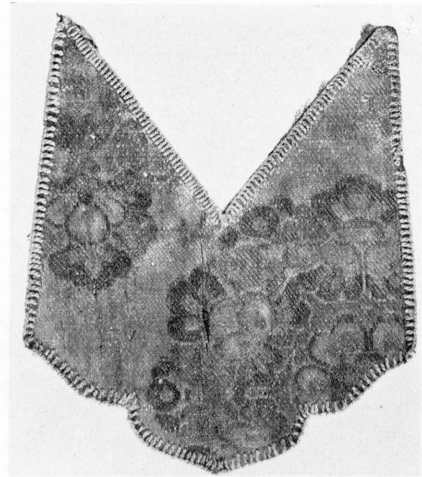
80 浅緑地唐花文錦 1/2



81 緑地唐花文錦 1/2



82 黄地唐花文錦 1/2



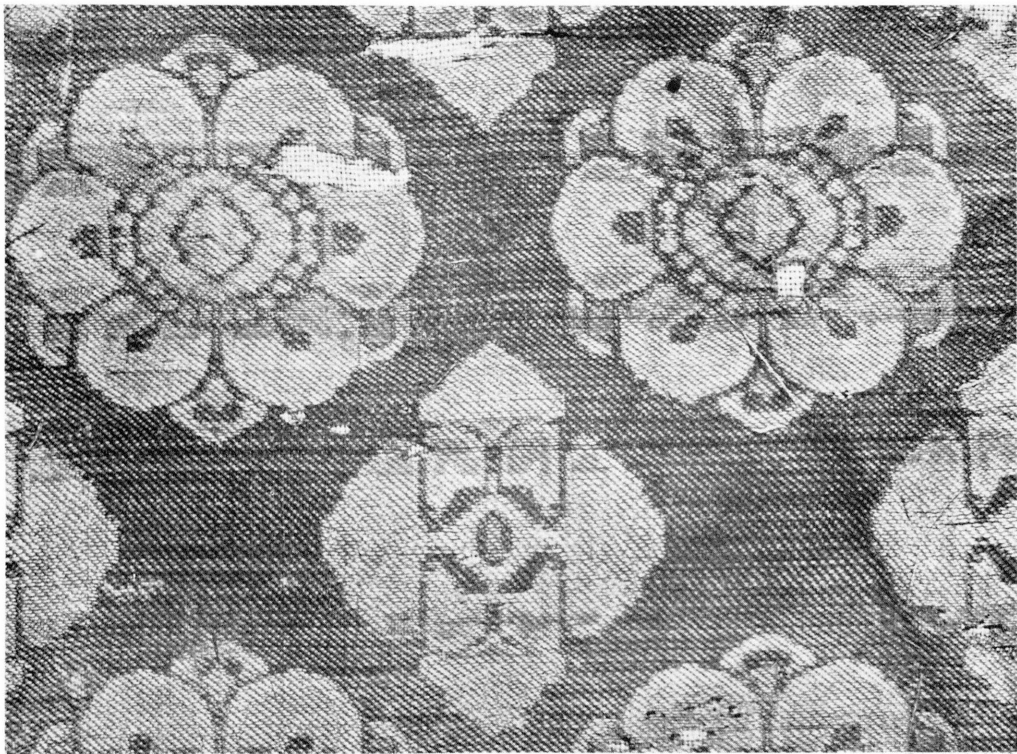
83 白地唐花文錦 1/2



85 深縹地唐花文錦 1/1.5



84 緑地唐花文錦 1/1.5



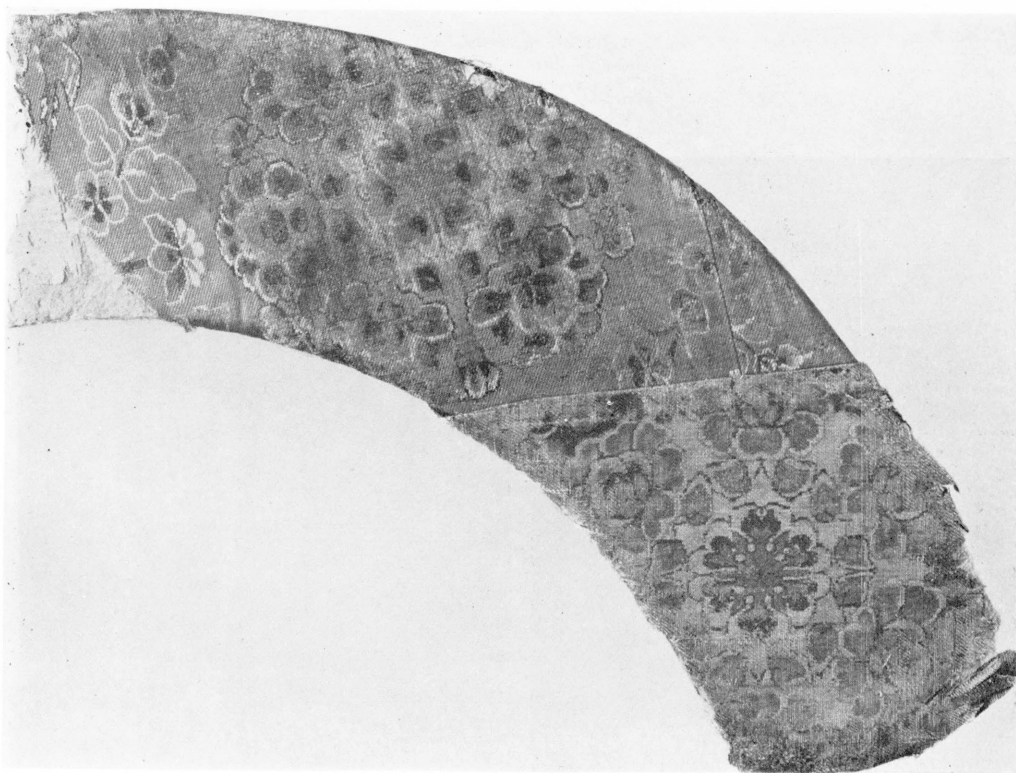
86 紫地花文錦 1/1.5



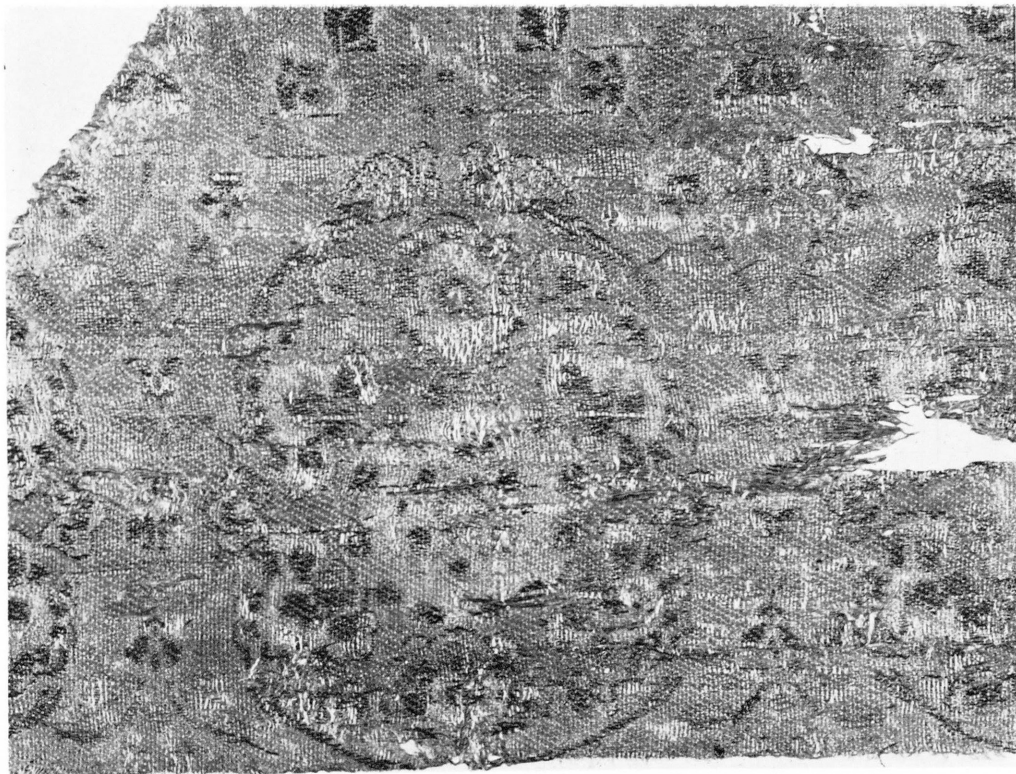
88 緑地草花文錦 1/1.5 ←経



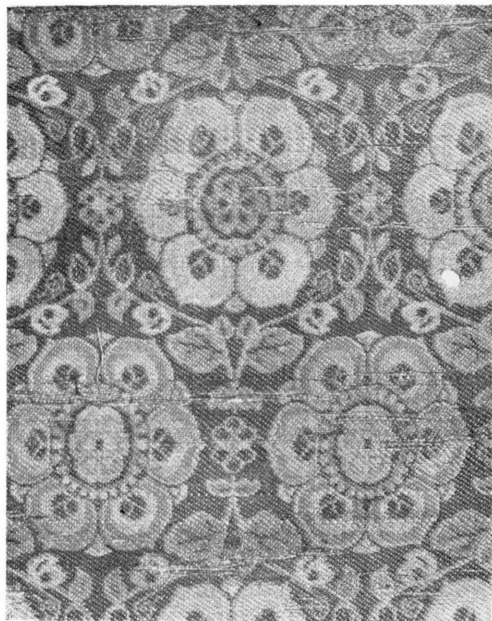
87 白地花文錦 1/1



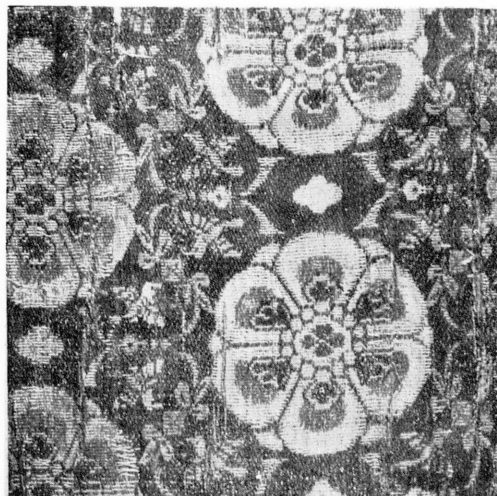
89 赤地白地唐草花鳥文錦 1/2.5



90 浅緑地唐草花鳥文錦 1/1



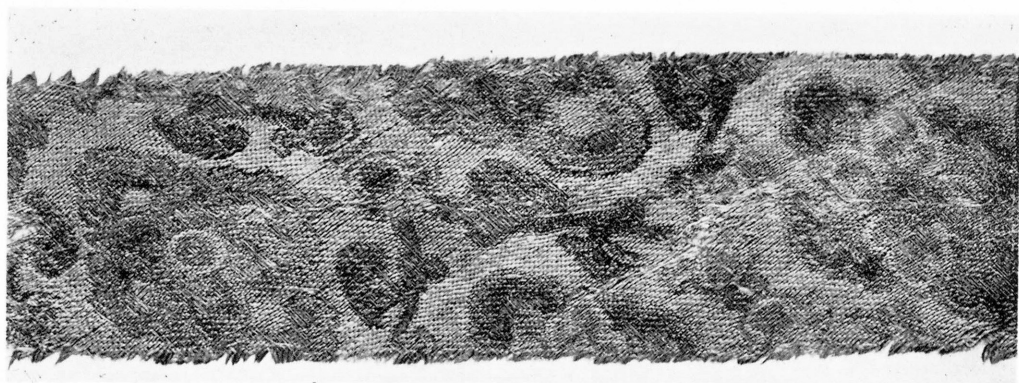
92 緑地唐草花文錦 1/2



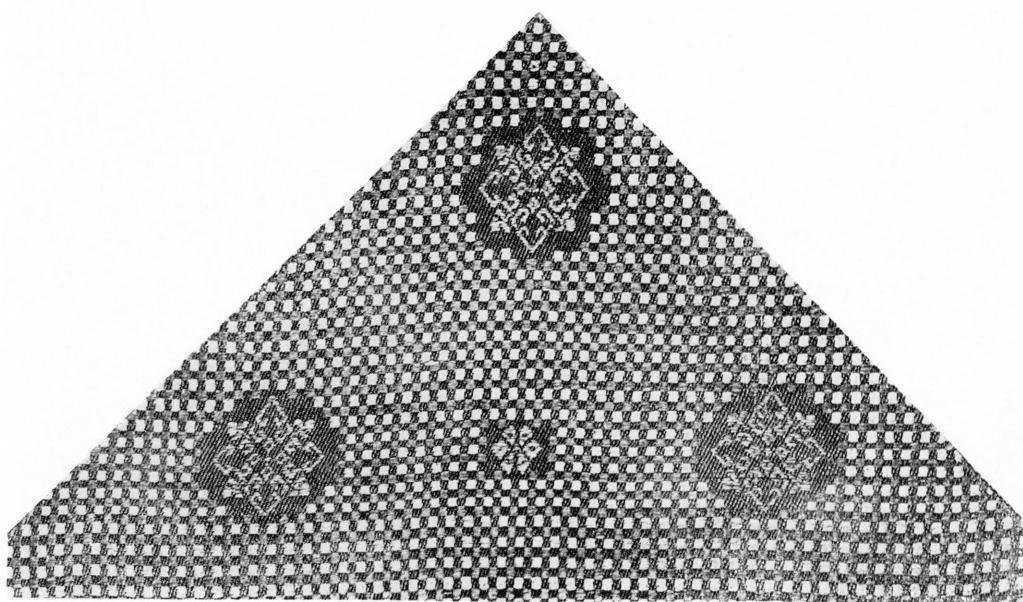
91 緑地花鳥文錦 1/2



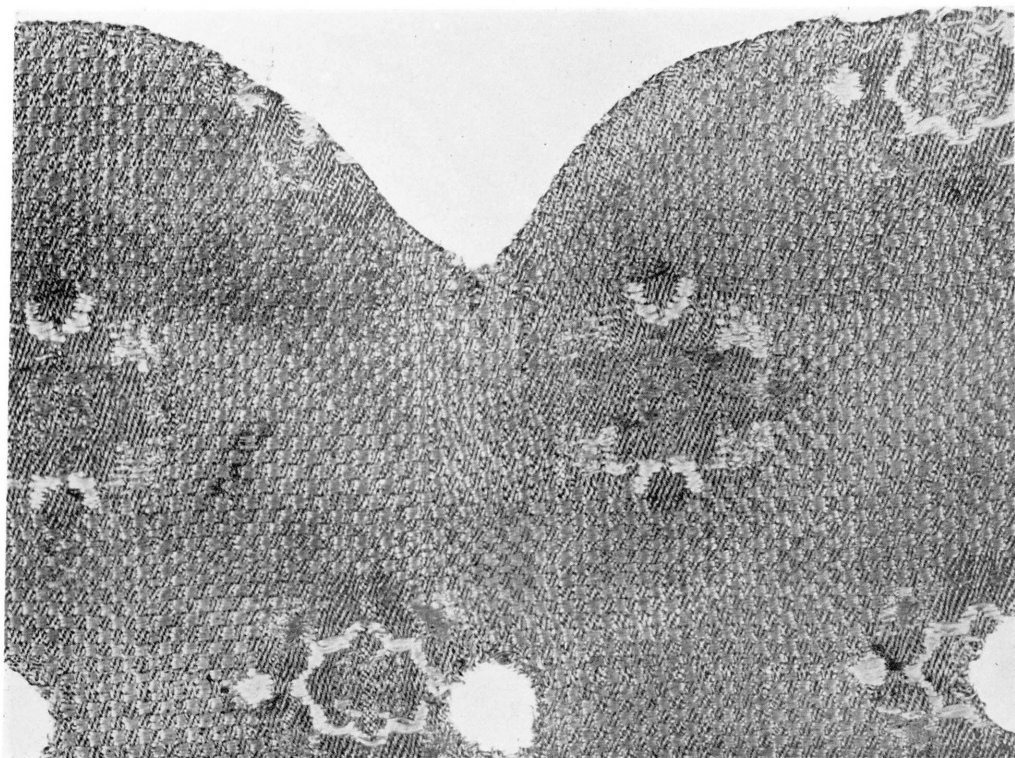
93 白茶地唐草花文錦 1/4



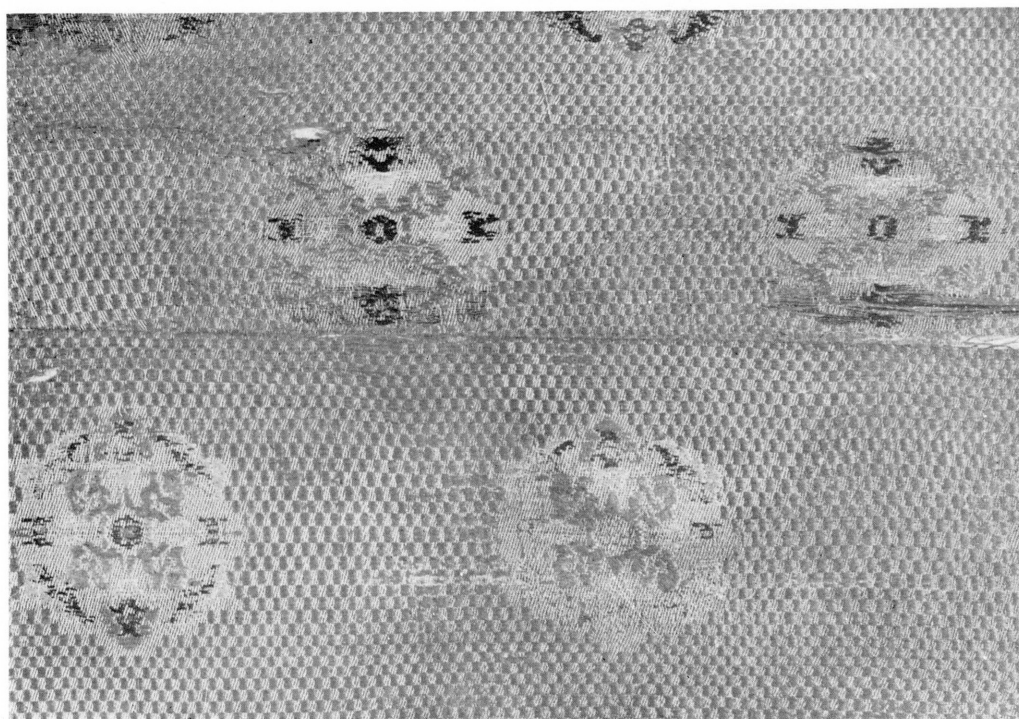
94 浅緑地唐草花文錦 1/4 へ経



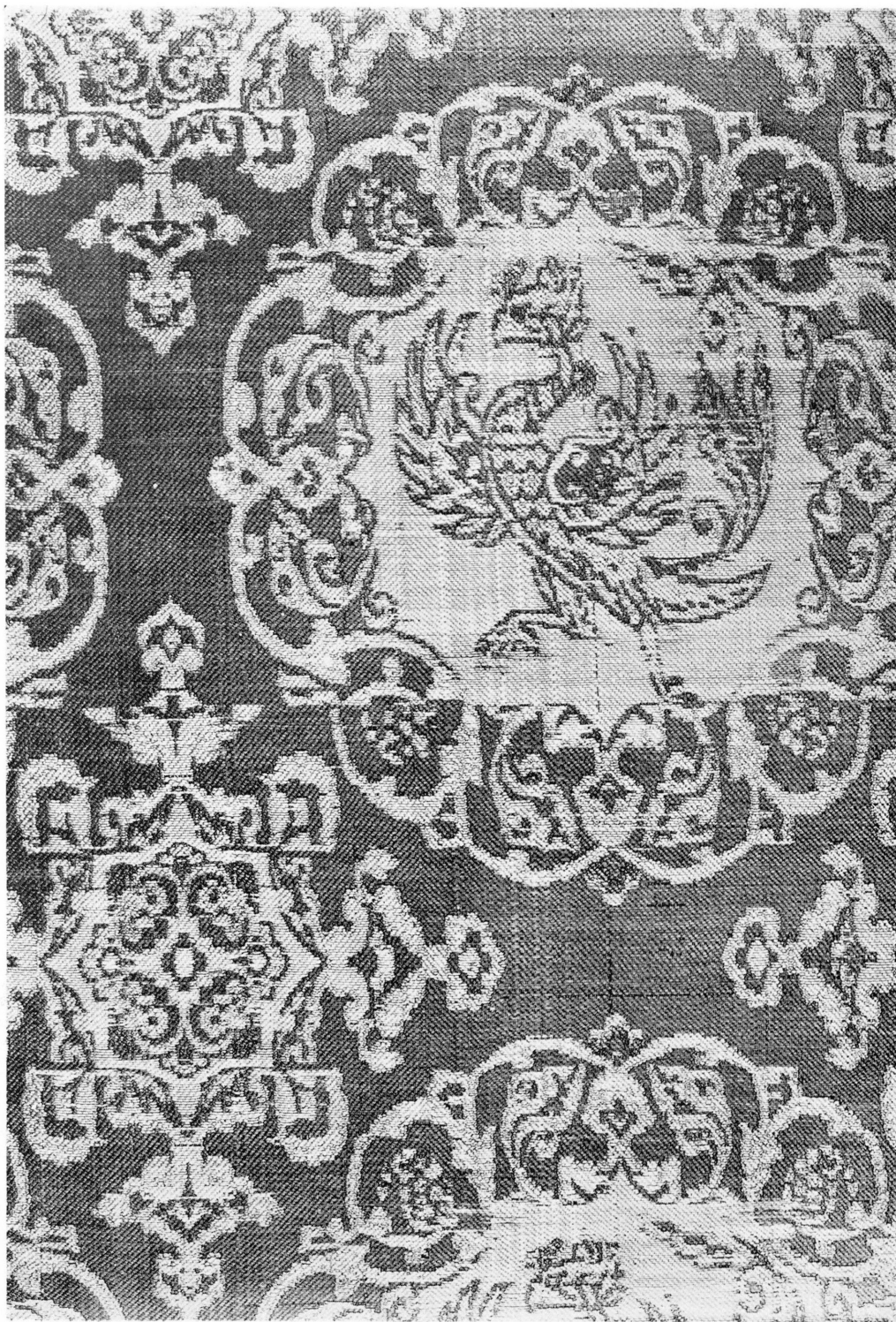
95 緑地霞花文錦 1/2

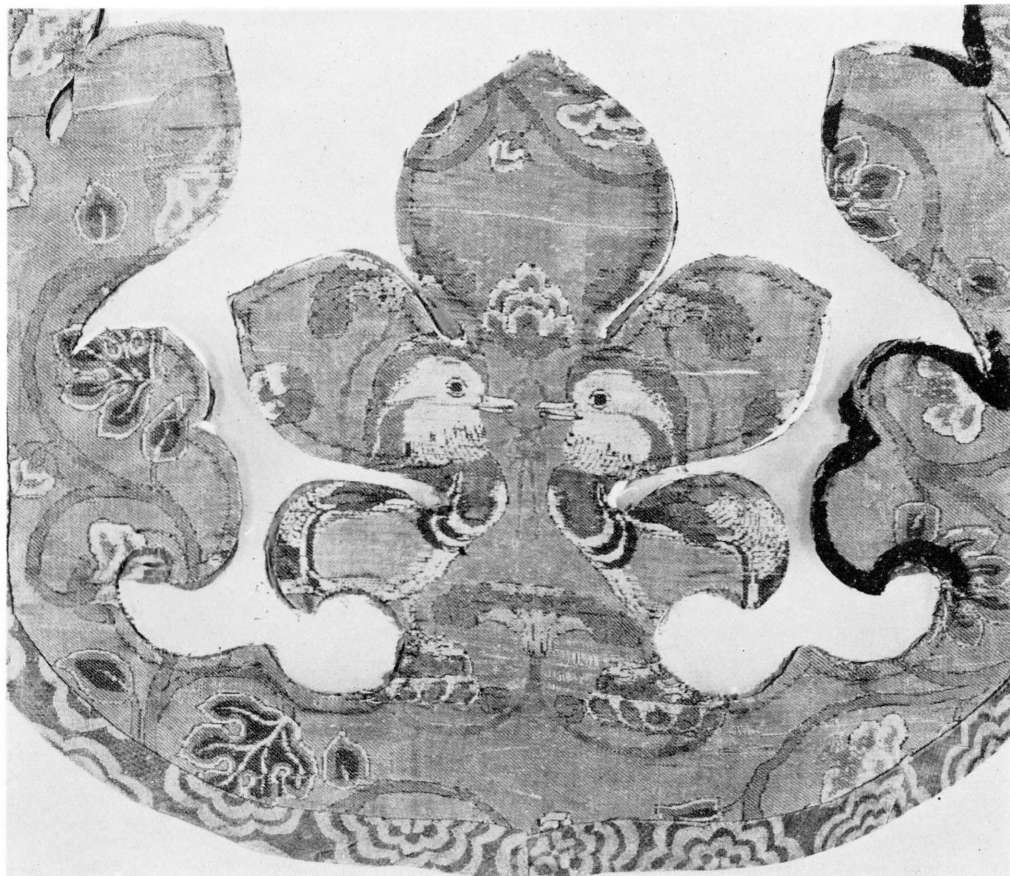


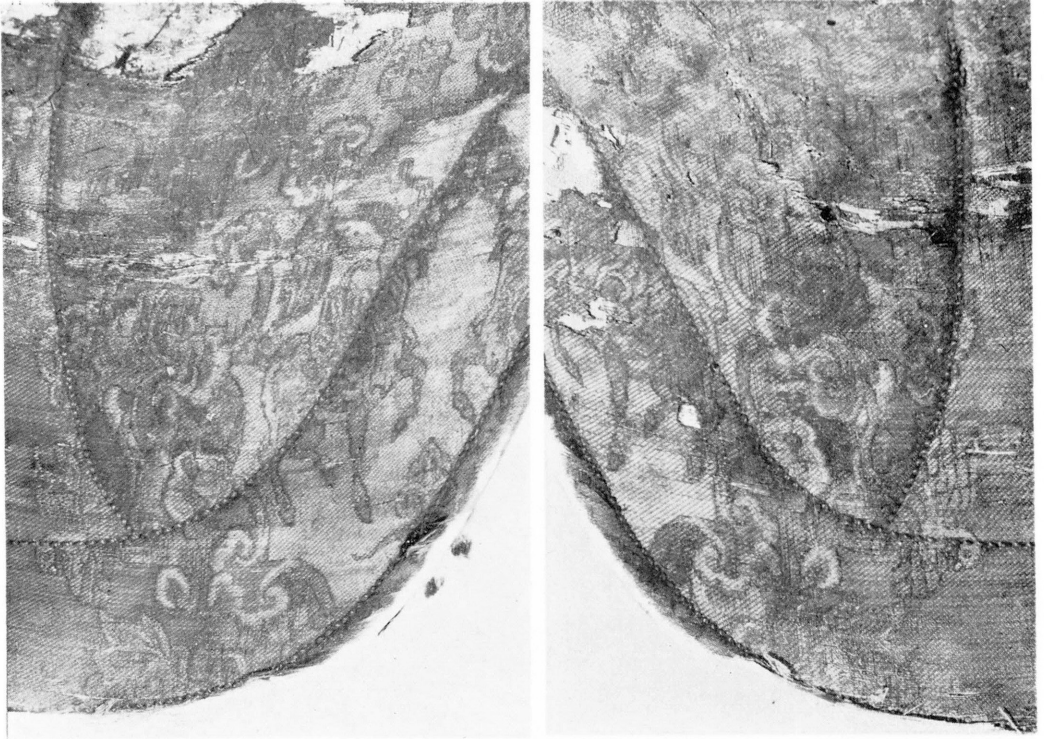
96 緑地散花文錦 1/1



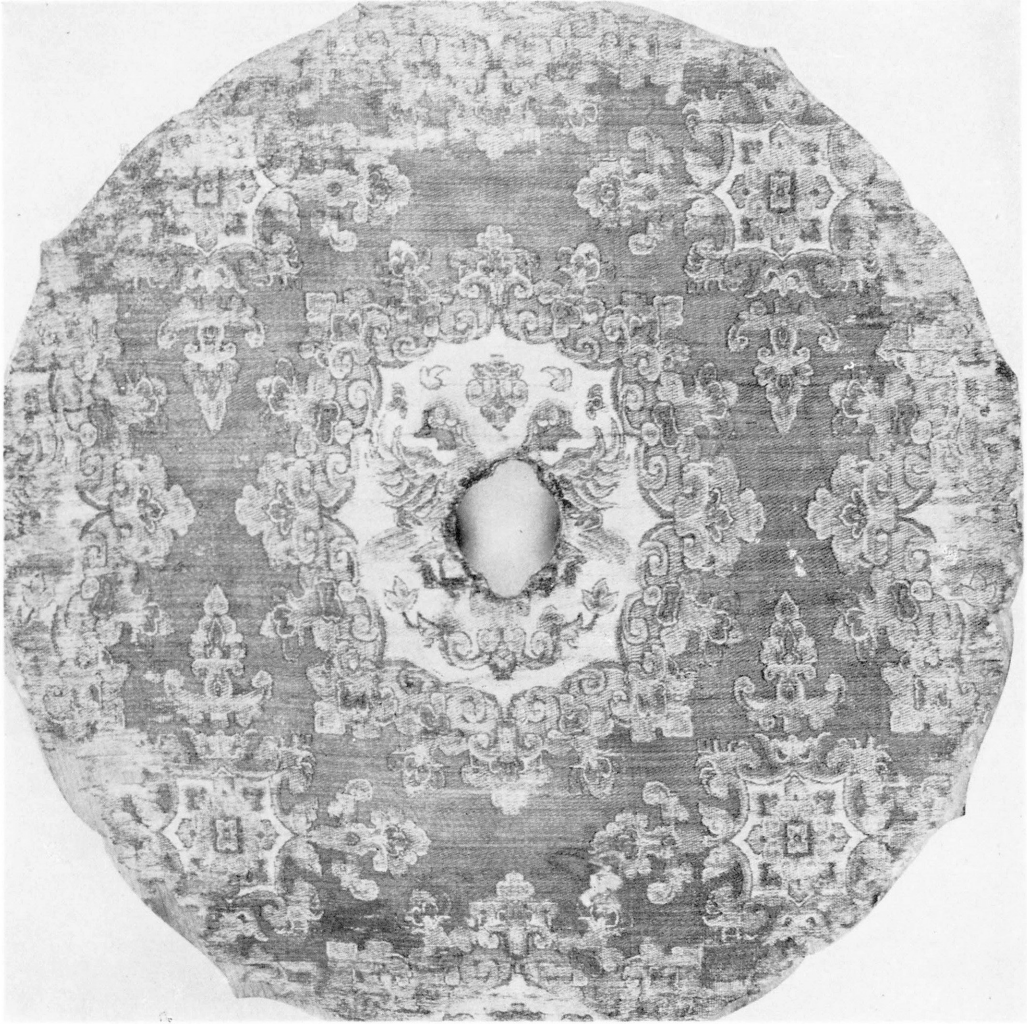
97 茶地散唐花文錦 1/2







100 赤地キリン唐花文錦（上主文部、下副文部）下図 1/2



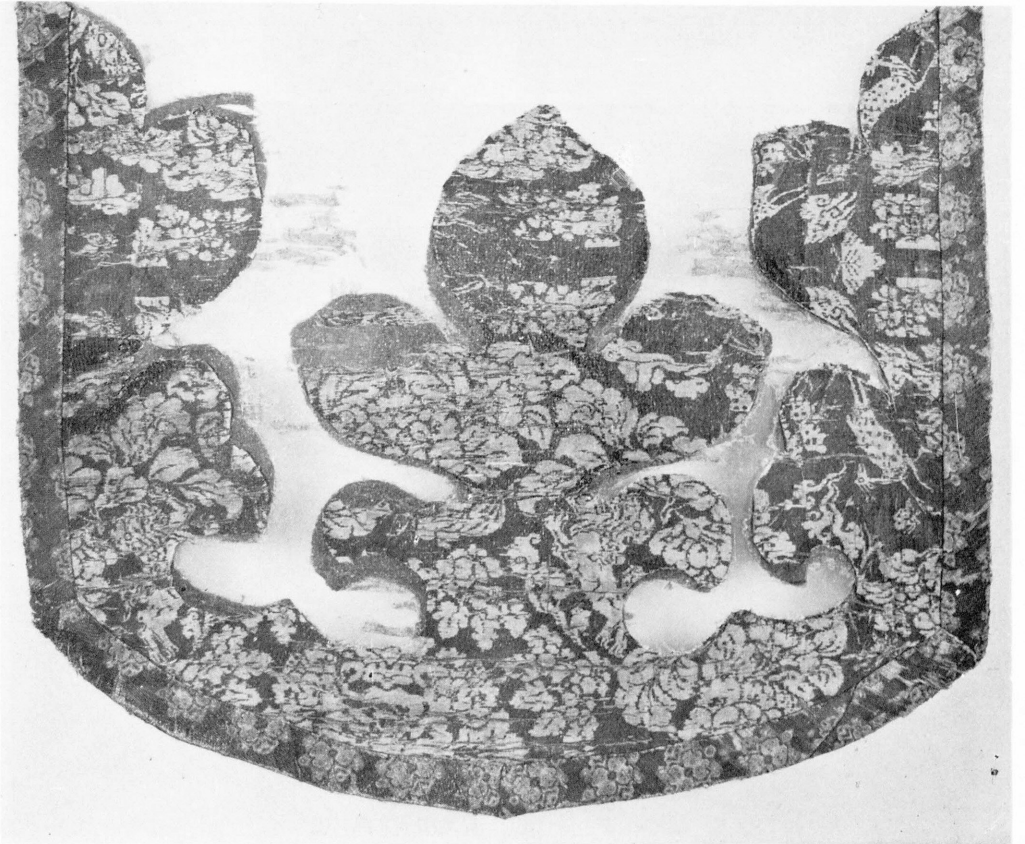
101 赤地双禽唐花文錦  $\frac{1}{3}$



102 赤地獅子唐花文錦  $\frac{1}{1.5}$  ←経



103 浅緑地鹿唐花文錦 1/4

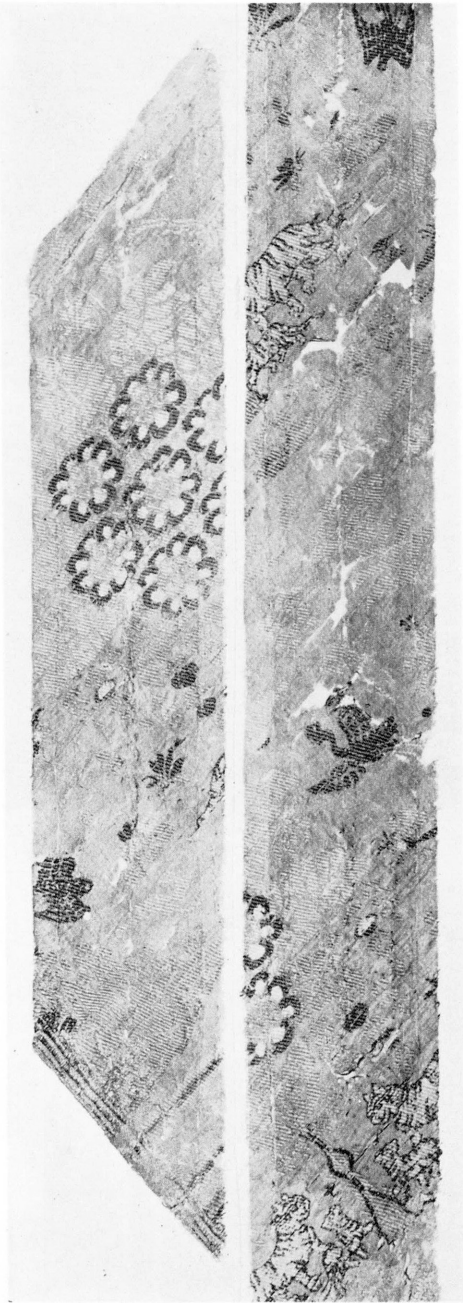


104 紫地唐花鳥獸文錦 1/4

105 赤紫地唐花獅子文錦 1/2



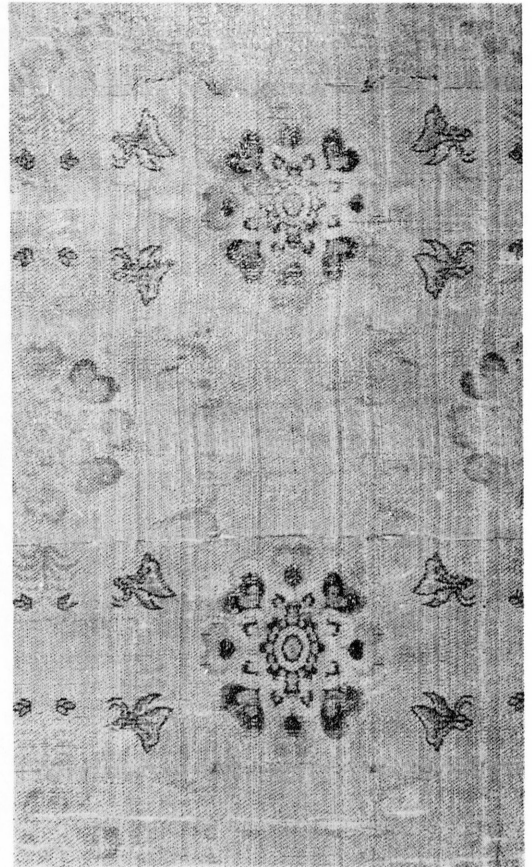
105 緑地山羊文錦 1/2



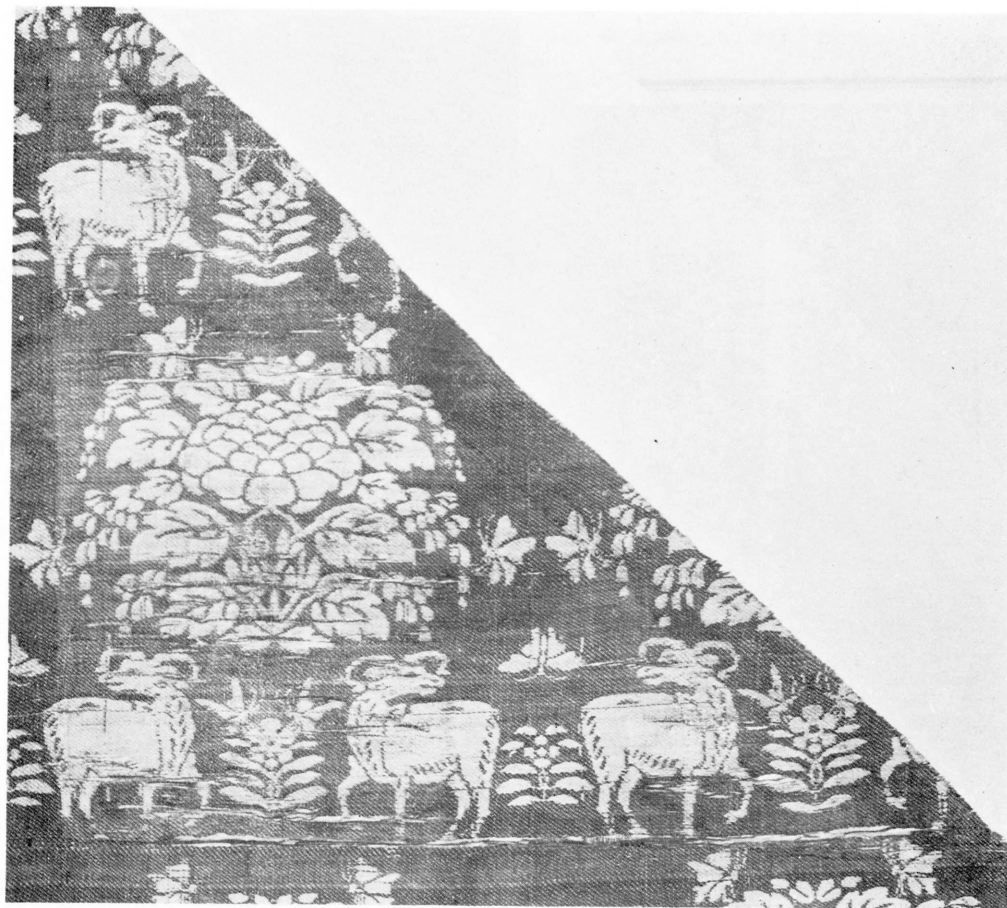
109 茶地花樹鳥獸文錦 1/2 入経



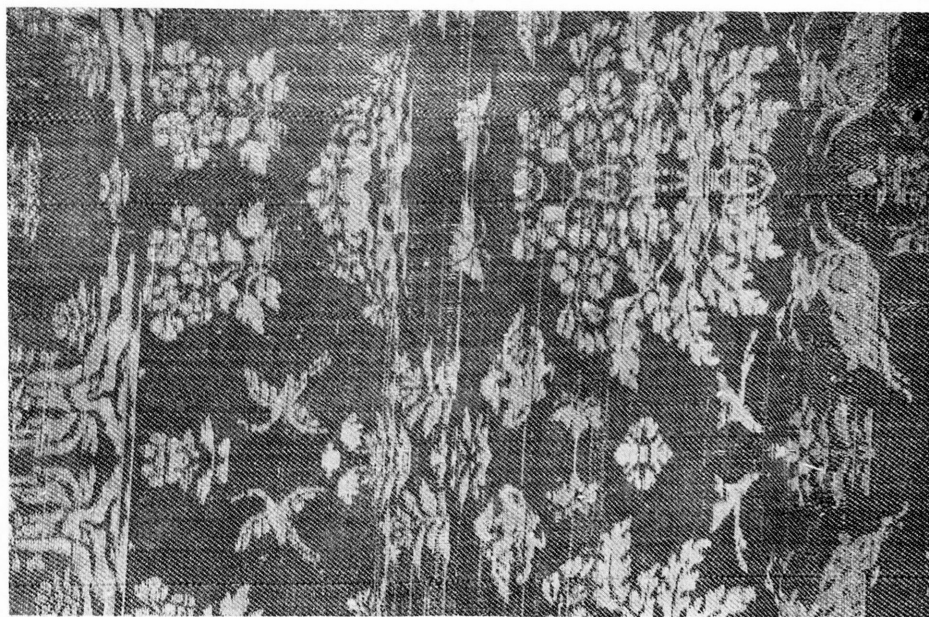
107 薄緑地花鳥浮文錦 1/2



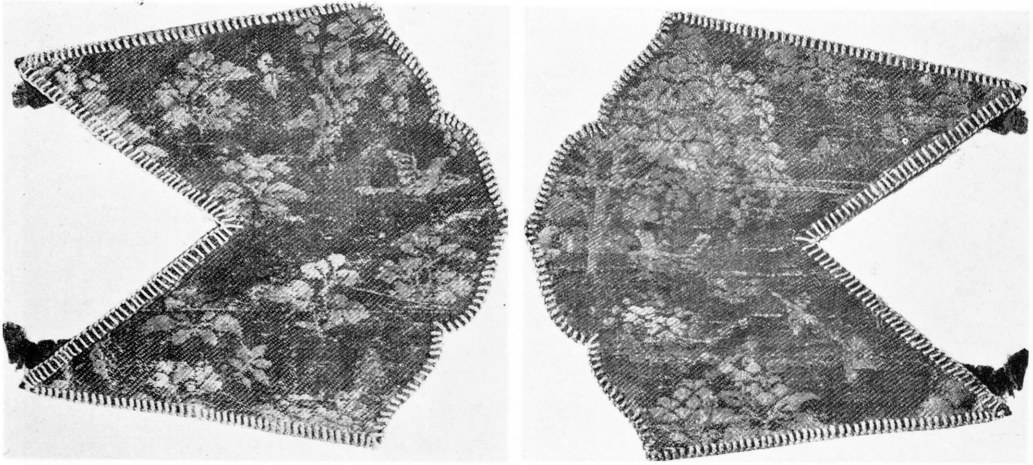
108 茶地唐花鳥蝶文錦 1/2



110 紫地花卉双羊文錦 1/2



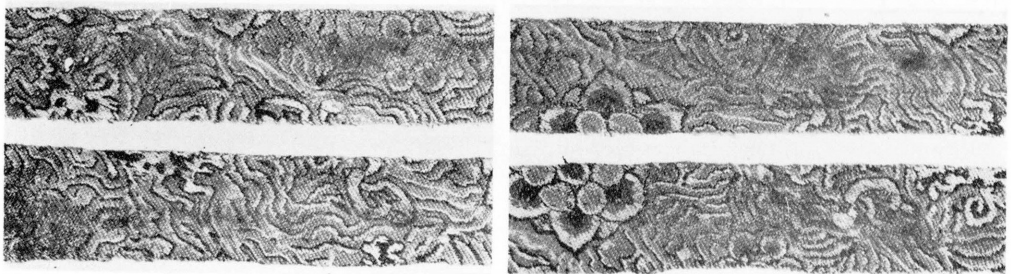
111 緑地花卉鳥獸文錦 1/3 ←経



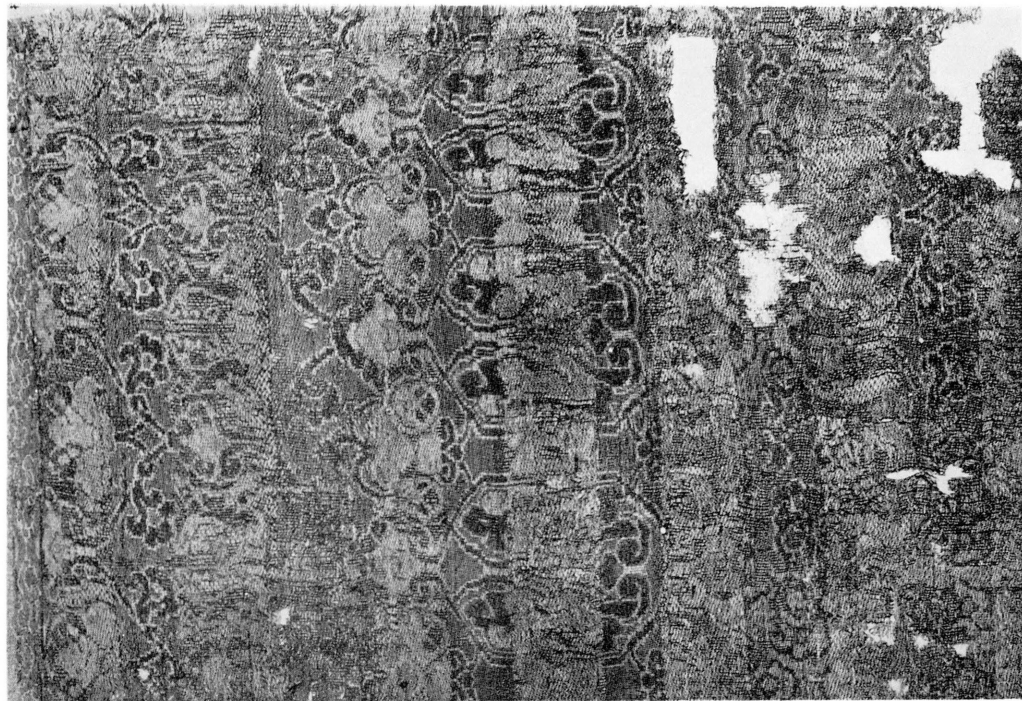
112 緑地花卉双鳥文錦 1/2



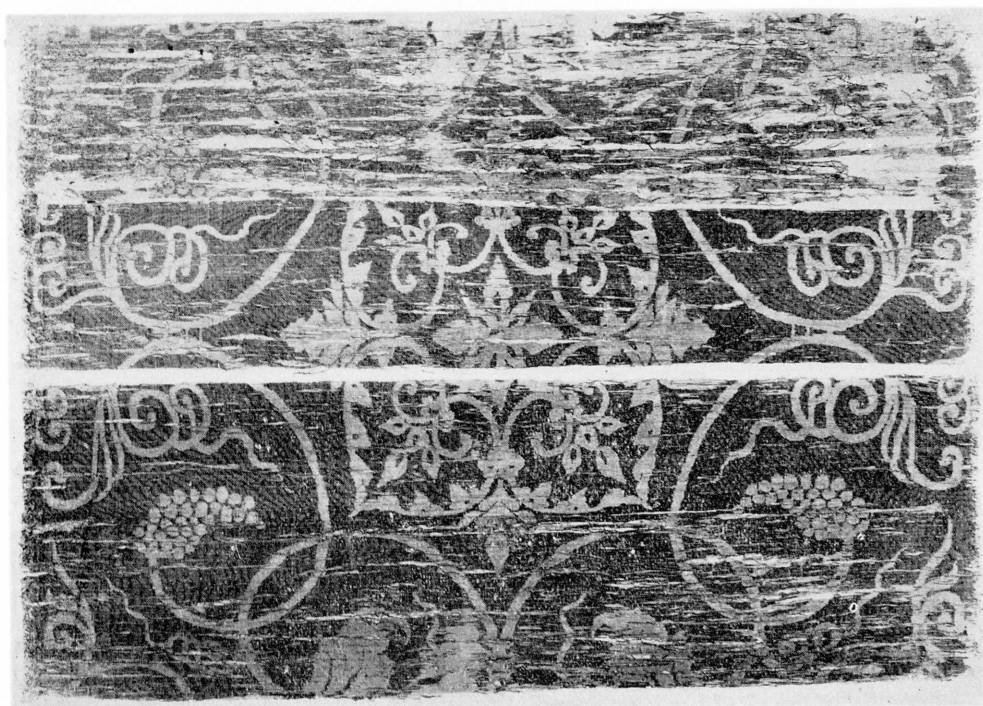
113 赤薄紫段花鳥文錦 1/1.5



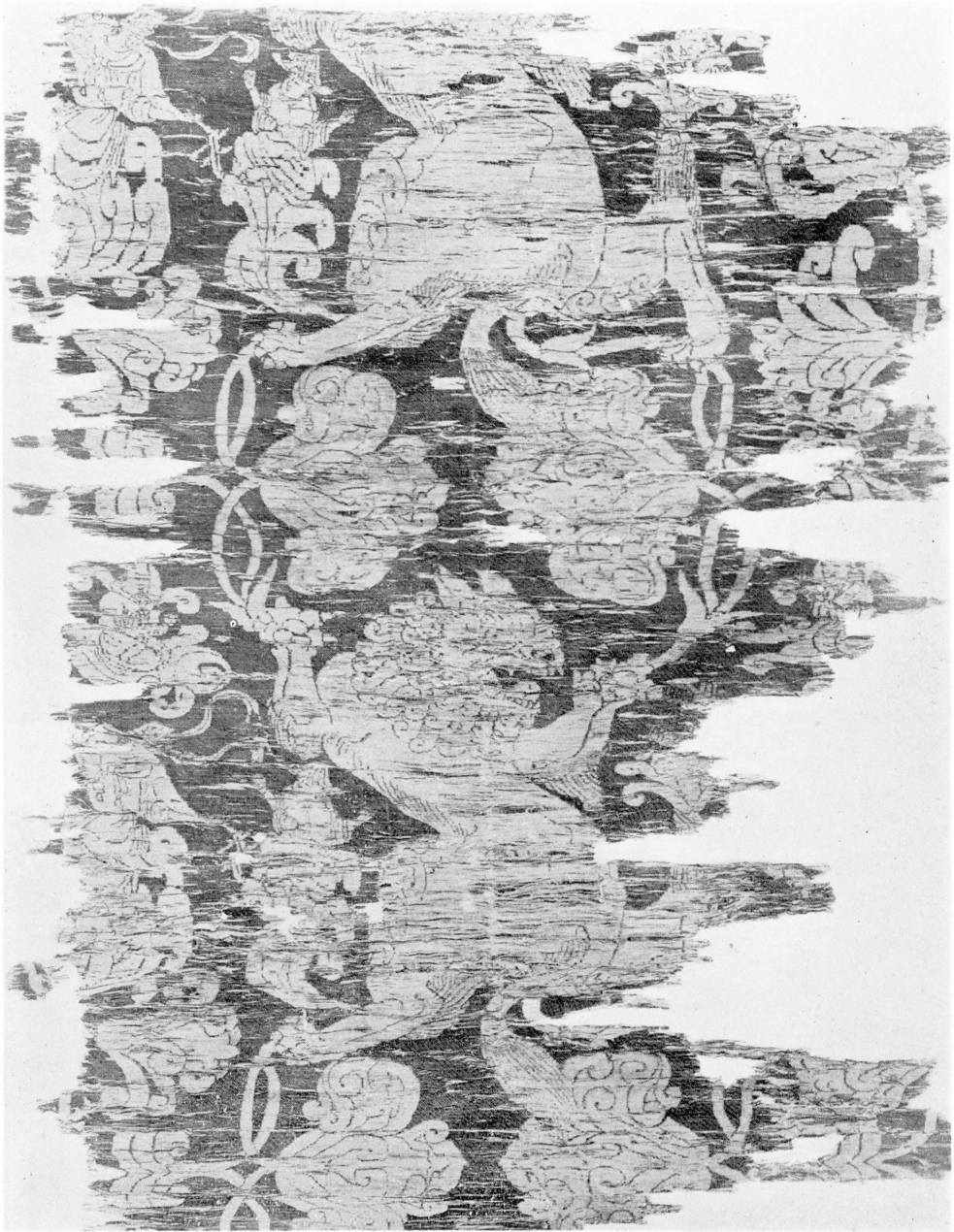
114 緑地花鳥獸文錦 1/2



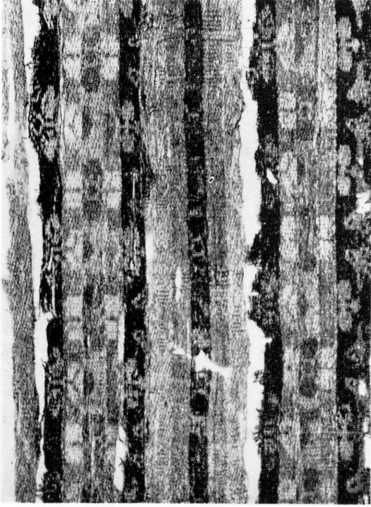
115 花唐草長斑錦 1/2



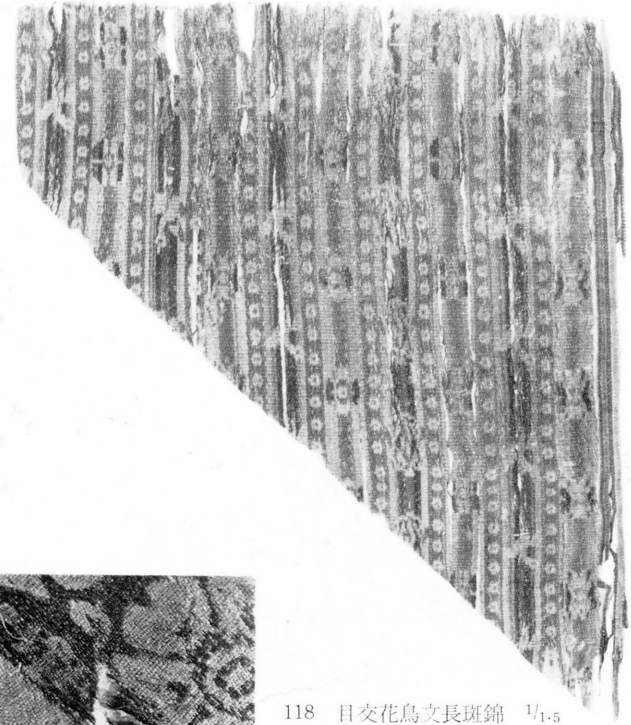
116 紫地ブドウ唐草文錦 1/4.5



117 紫地獅子奏楽文錦 1/4.5



119 花鳥文長斑錦 1/1.5



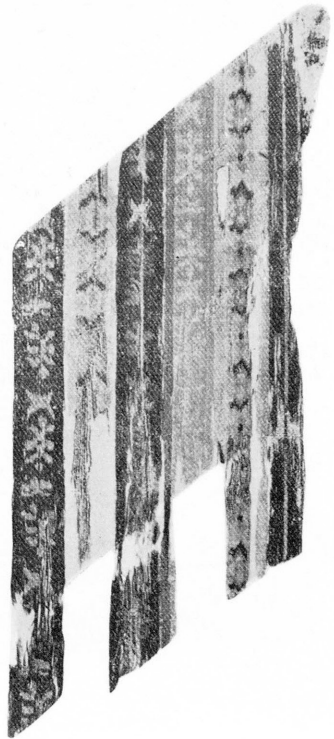
118 目交花鳥文長斑錦 1/1.5



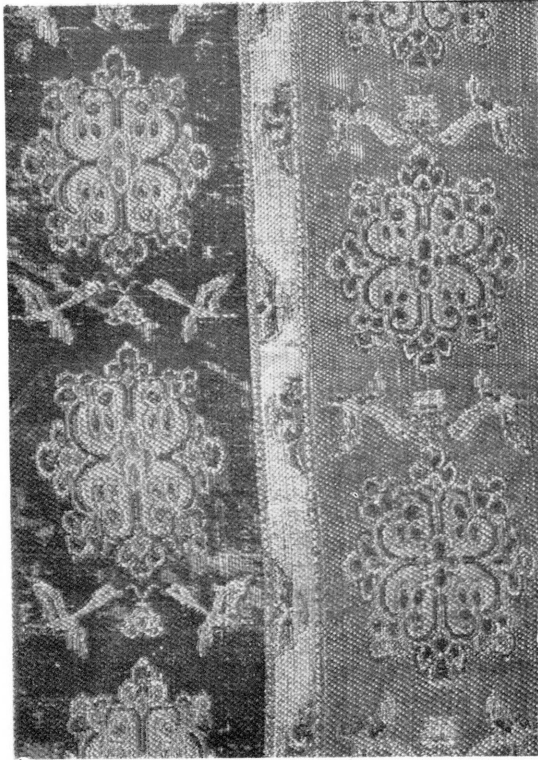
122 唐花文長斑錦 1/1.5 経ノ



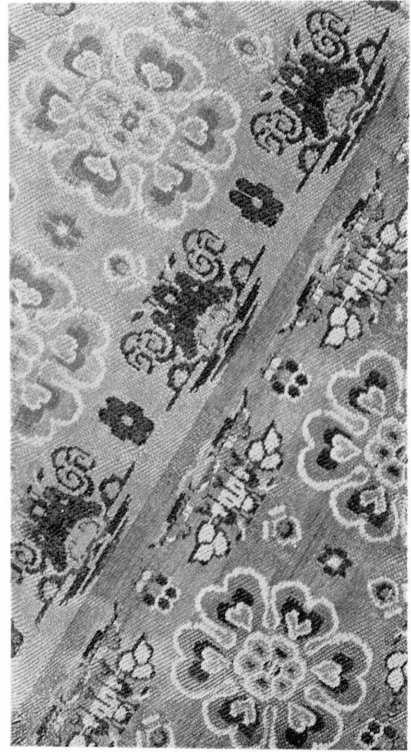
121 花文長斑錦 1/1.5 経ノ



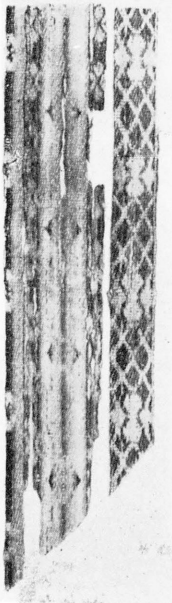
120 花鳥文長斑錦 1/1.5



125 花鳥文長斑錦 1/1.5



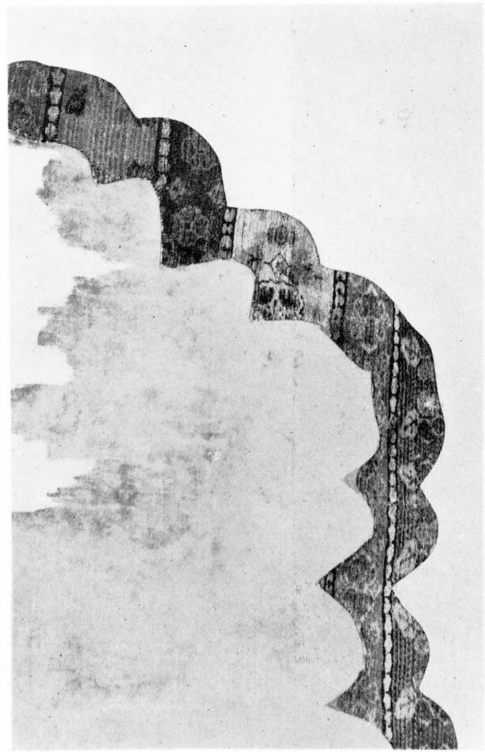
123 赤黄段花山岳文錦 1/1.5 へ経



127 網目花文  
暈網錦 1/1.5



126 石甃花文暈網錦 1/1.5 へ経



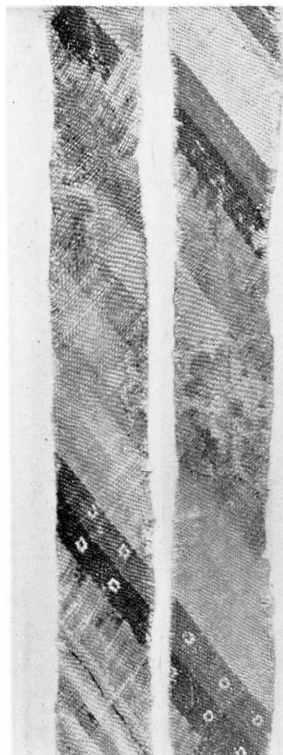
124 花葉文長斑錦 1/3



133 花目交菱文量綱錦  
1/1.5 経↗



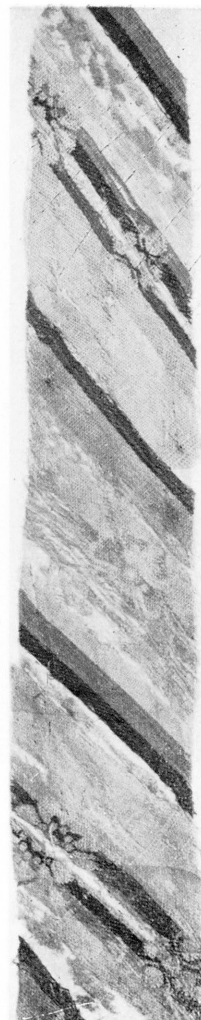
132 花雲菱文量綱錦  
1/1.5 経↗



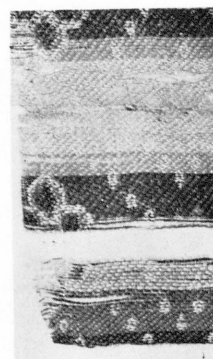
129 目交花文量綱錦 1/1.5 経↗



131 目交花葉文量綱錦  
1/1.5 経↗



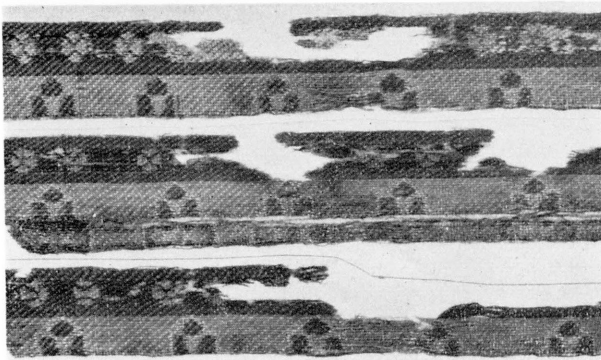
128 花文量綱錦  
1/1.5 経↗



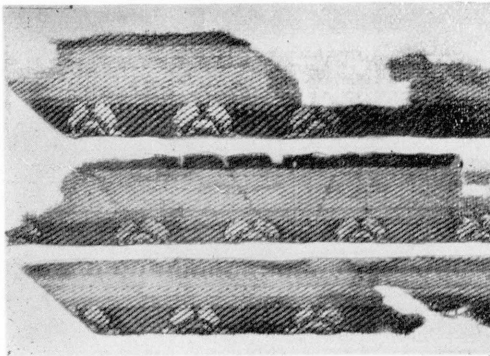
130 目交花文量綱錦 1/1.5



137 七曜四菱文暈細錦 1/1.5



138 花文暈細錦 1/1.5



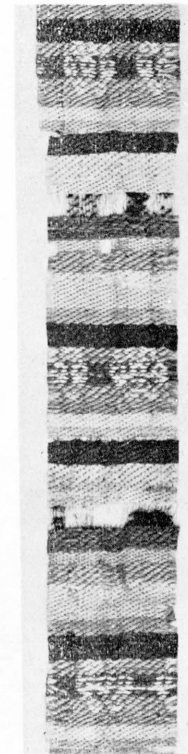
139 花文暈細錦 1/1.5



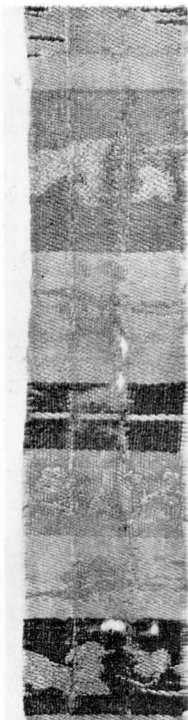
135 花目交文  
暈細錦  
1/1.5 経



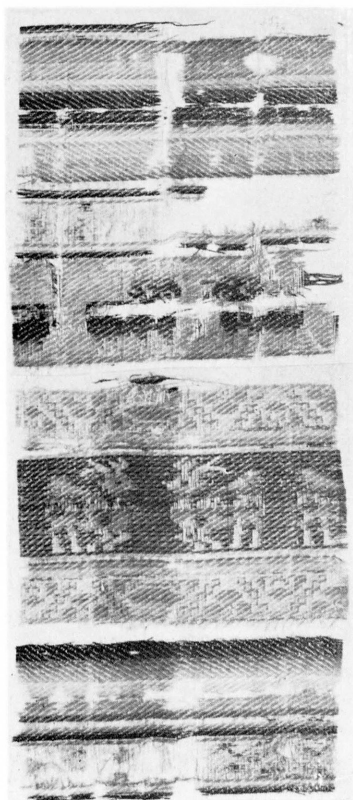
134 花文暈細錦  
1/1.5 経



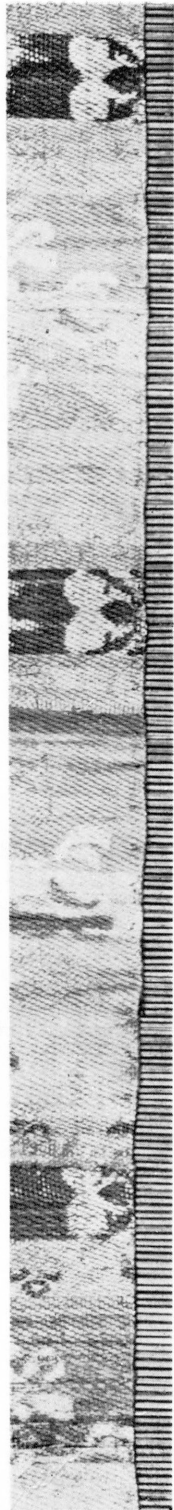
136 七曜文暈細錦  
1/1.5



142 雲花双鳥文暈  
細錦 1/1.5



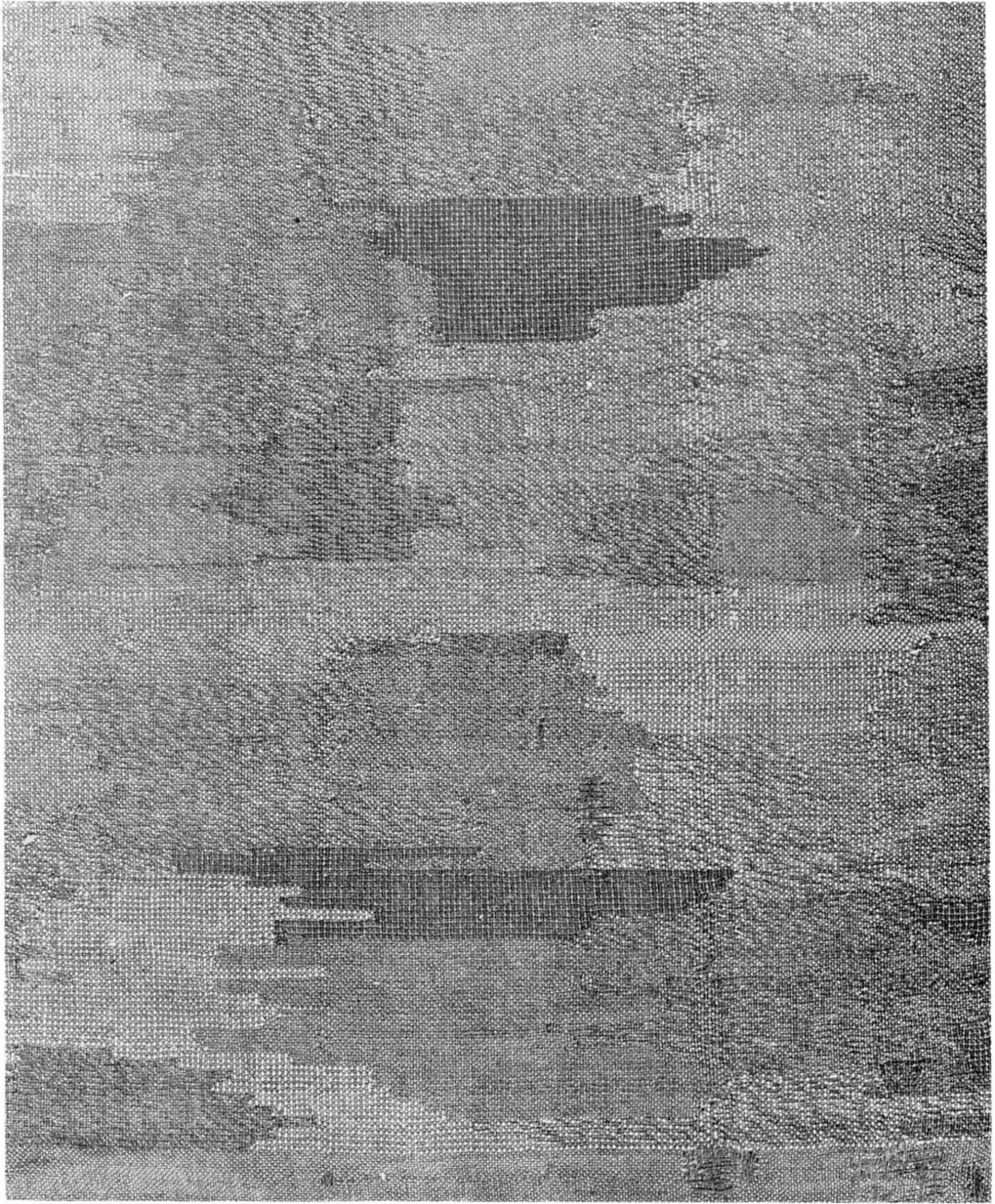
143 鹿羊文暈細錦 1/1.5



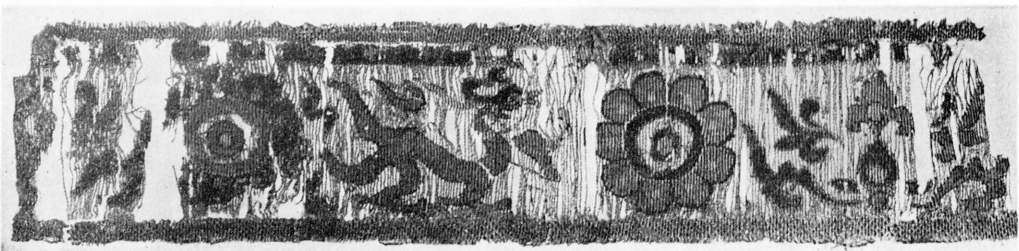
141 鶴鵞文暈細錦 1/1.5



140 鶴鵞文暈細錦 1/1.5 経



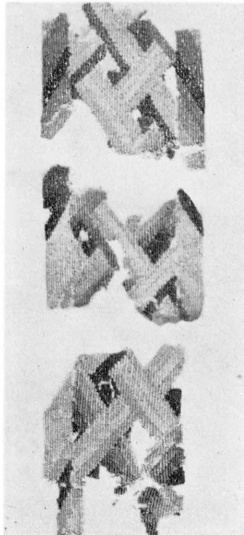
144 樹皮色織成  $\frac{1}{2}$



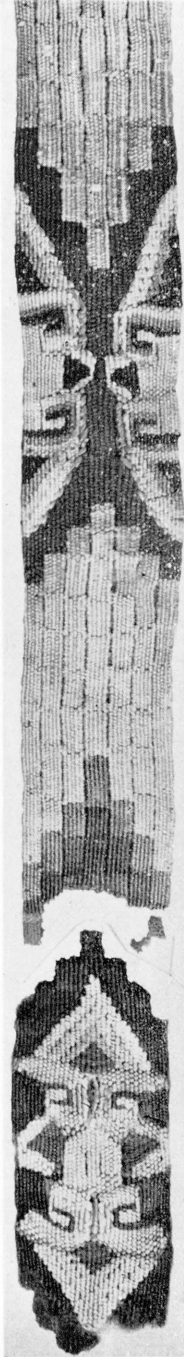
145 金地双竜花文綴錦  $\frac{3}{4}$



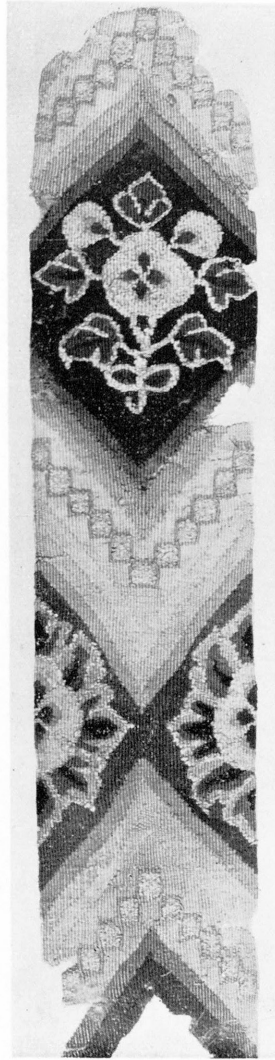
149 山道花文綴錦  $\frac{1}{1.5}$



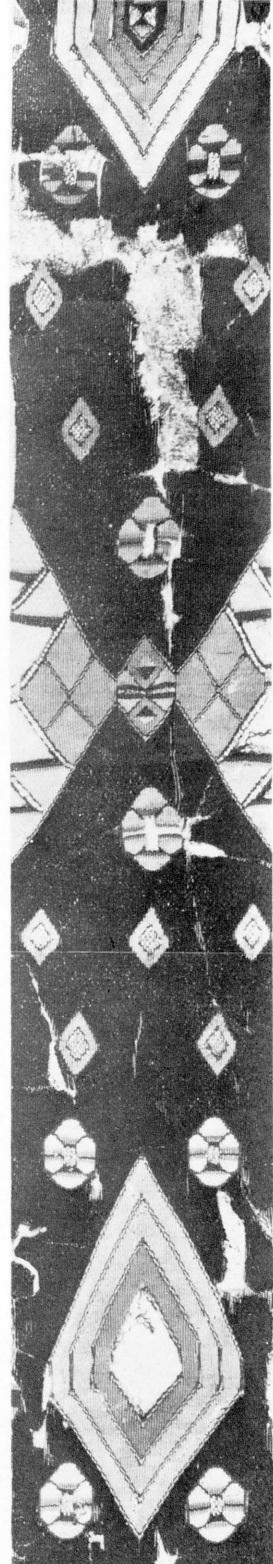
150 網代文綴錦  $\frac{1}{1.5}$



148 石甃地花文綴錦  $\frac{1}{1.5}$



147 草花菱文綴錦  $\frac{1}{1.5}$



146 紫地菱形文綴錦  $\frac{1}{2}$