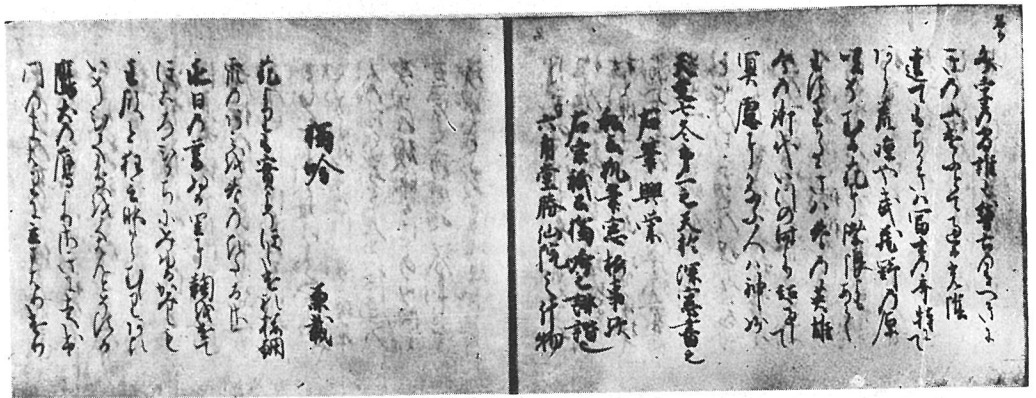
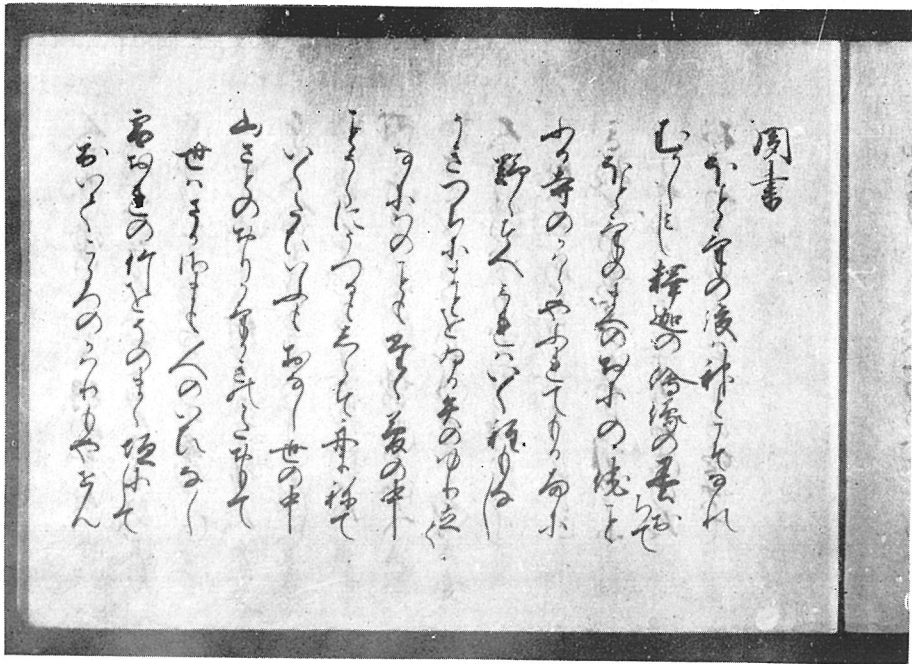


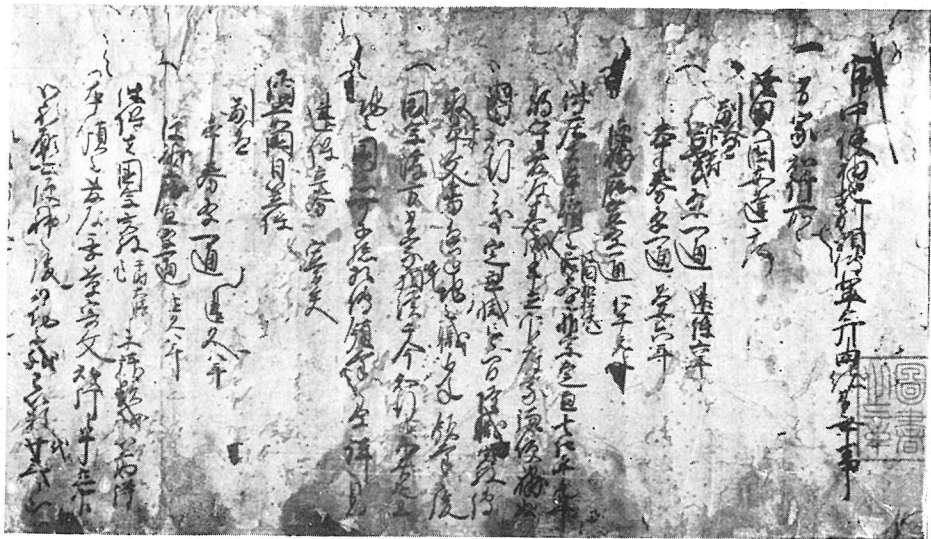
東山御文庫本「宗祇疊字連歌獨吟百韻」表紙卷頭



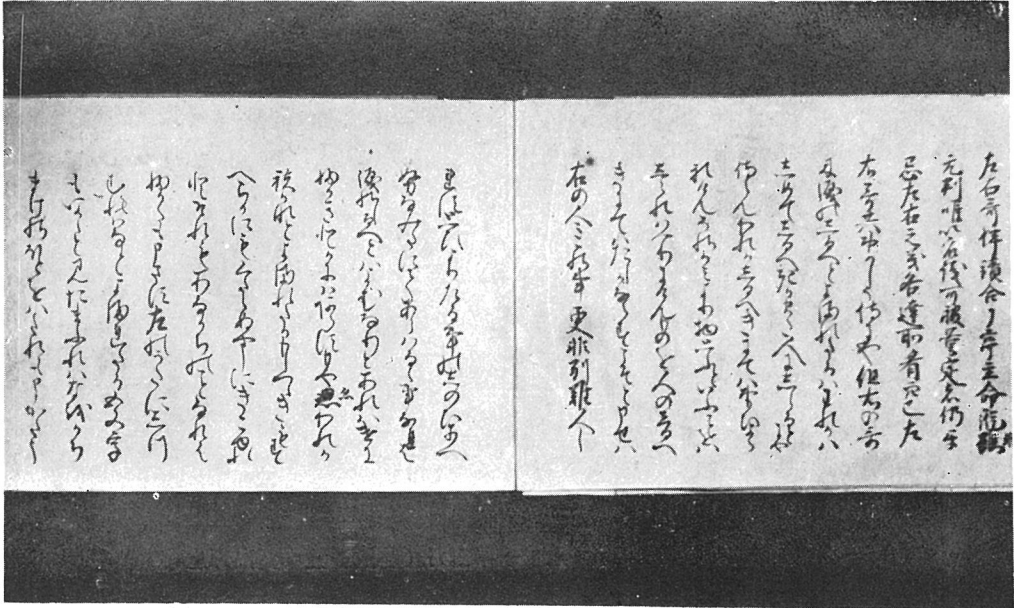
同上「宗祇獨吟百韻」卷尾・「兼載誹諧獨吟百韻」卷頭



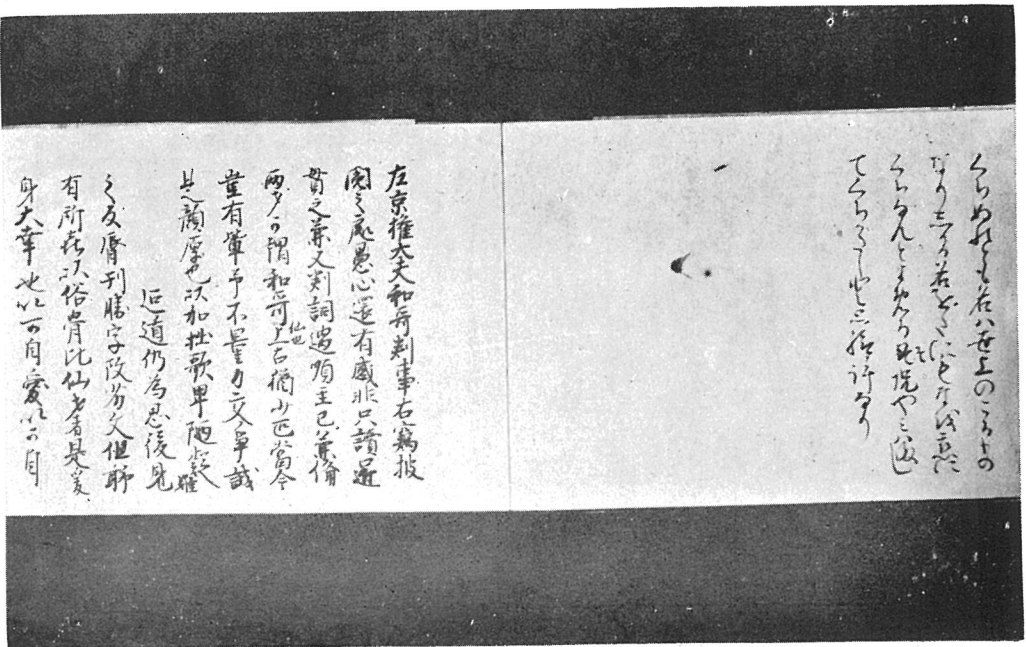
書陵部本「三吟百韻」聞書 卷頭



壬生家文書「小槻有家注文」



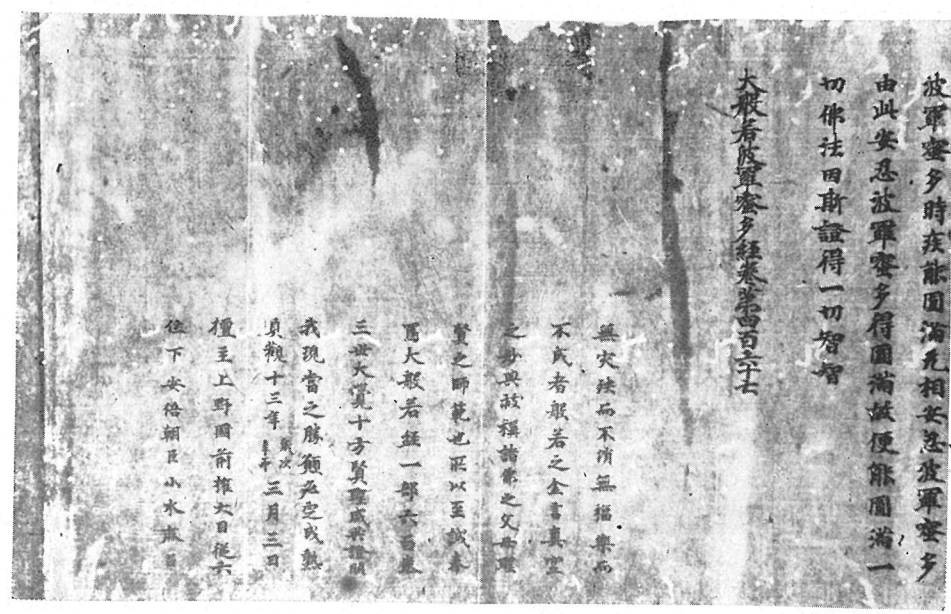
書陵部本「國信卿家歌合」一番判詞



同上「國信卿家歌合」基俊後記前文

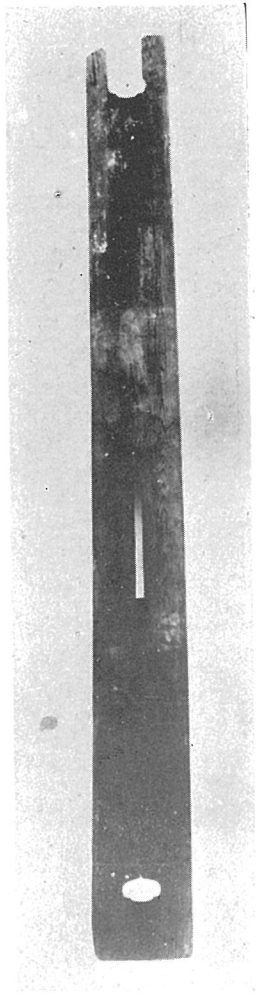


書陵部本「廣橋守光記」永正十年四月（將軍義植甲賀出奔之事）

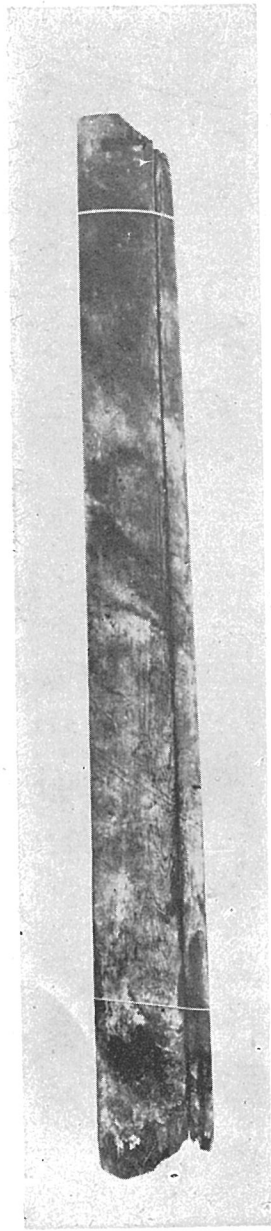


書陵部本「慈光寺經」（貞觀十三年小水麻呂寫）

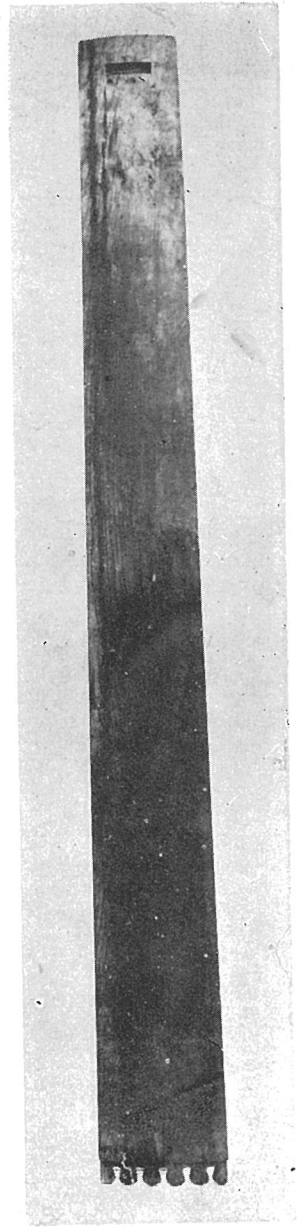
圖版 第五 (正倉院樂器)



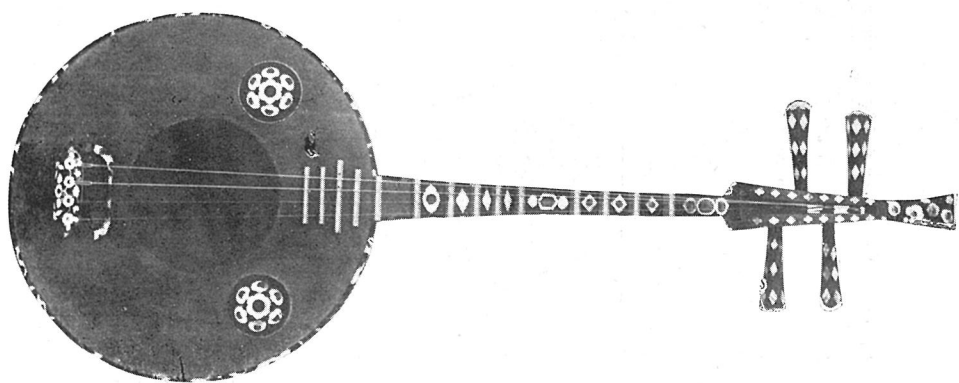
3



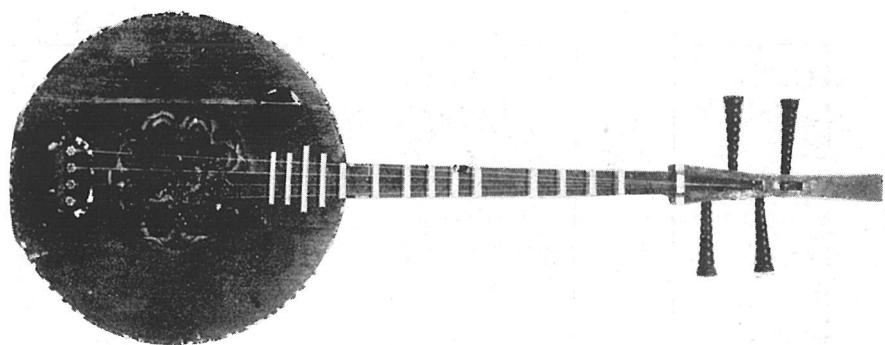
2



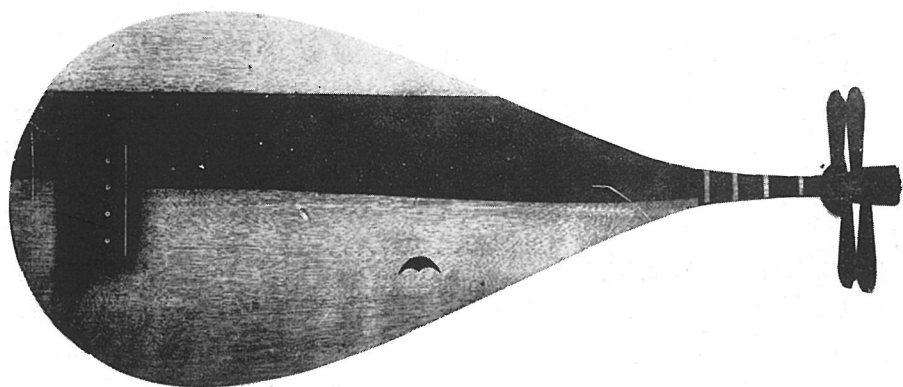
1



4

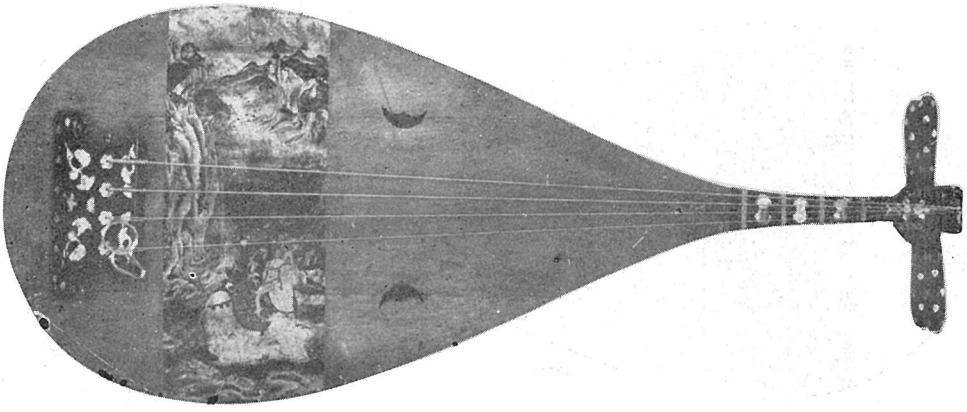


5

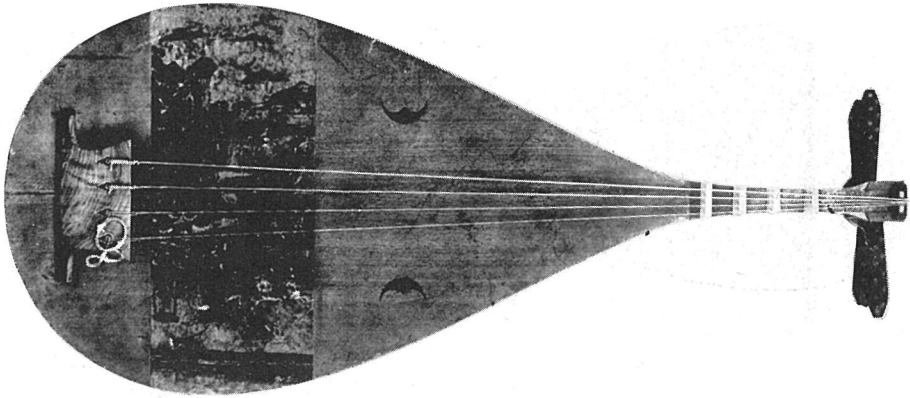


6

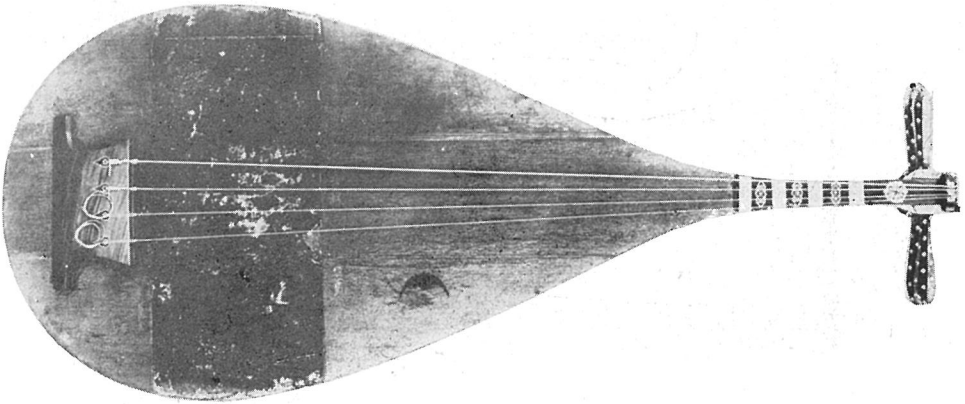
圖版第七 (正倉院樂器)



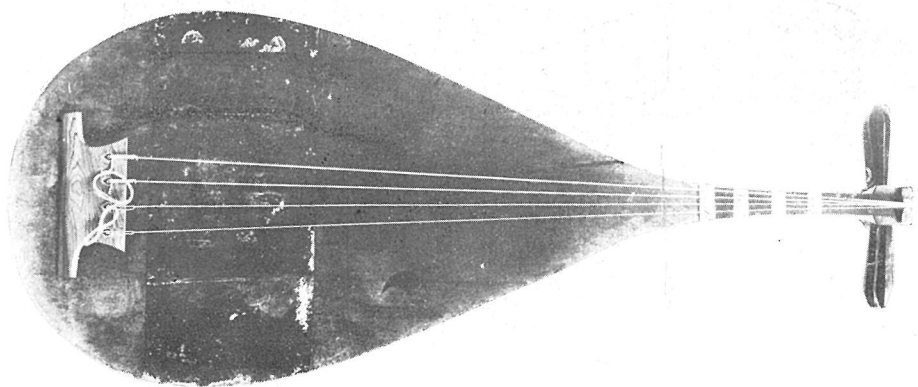
7



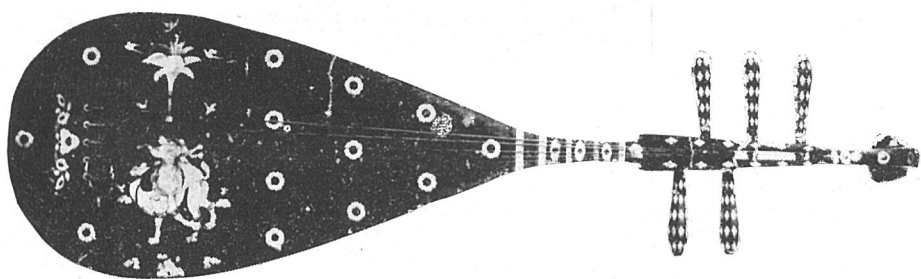
8



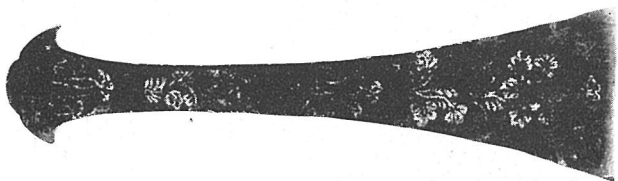
9



10



11



12



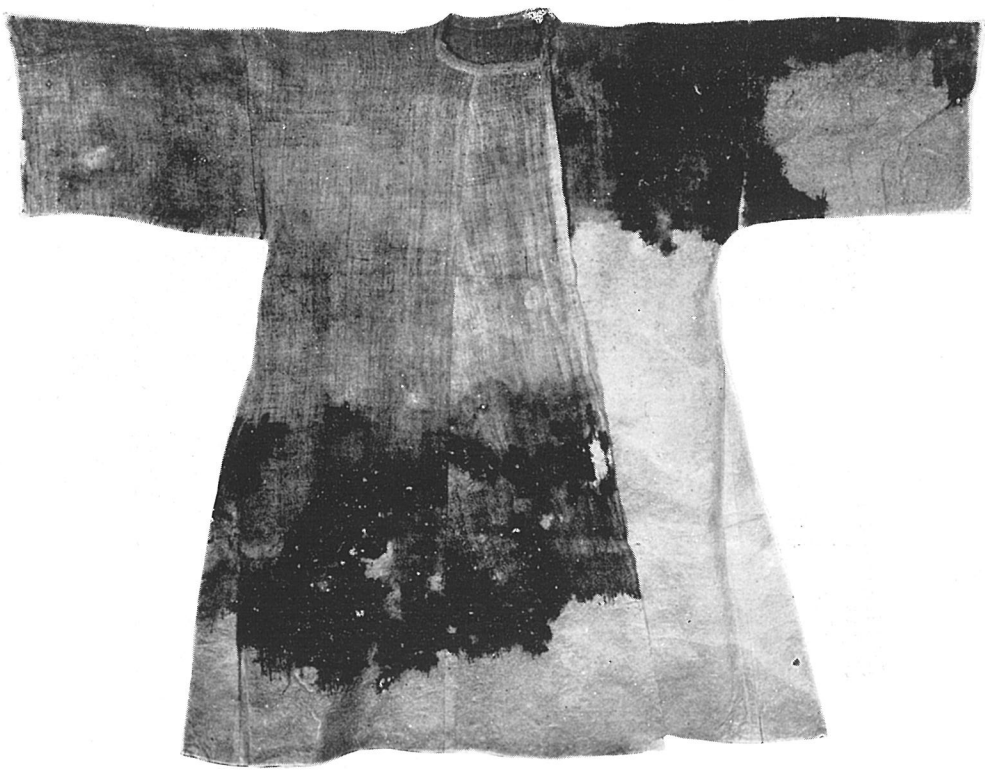
13



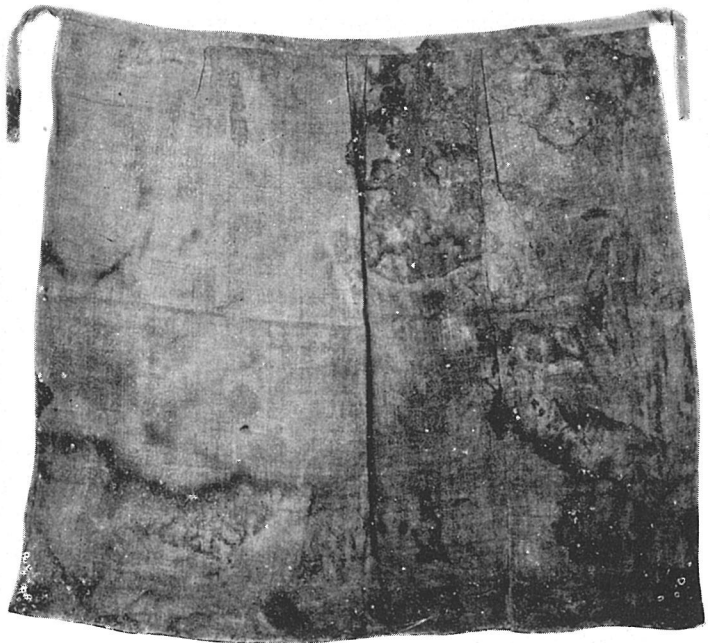
淺紅細布袍



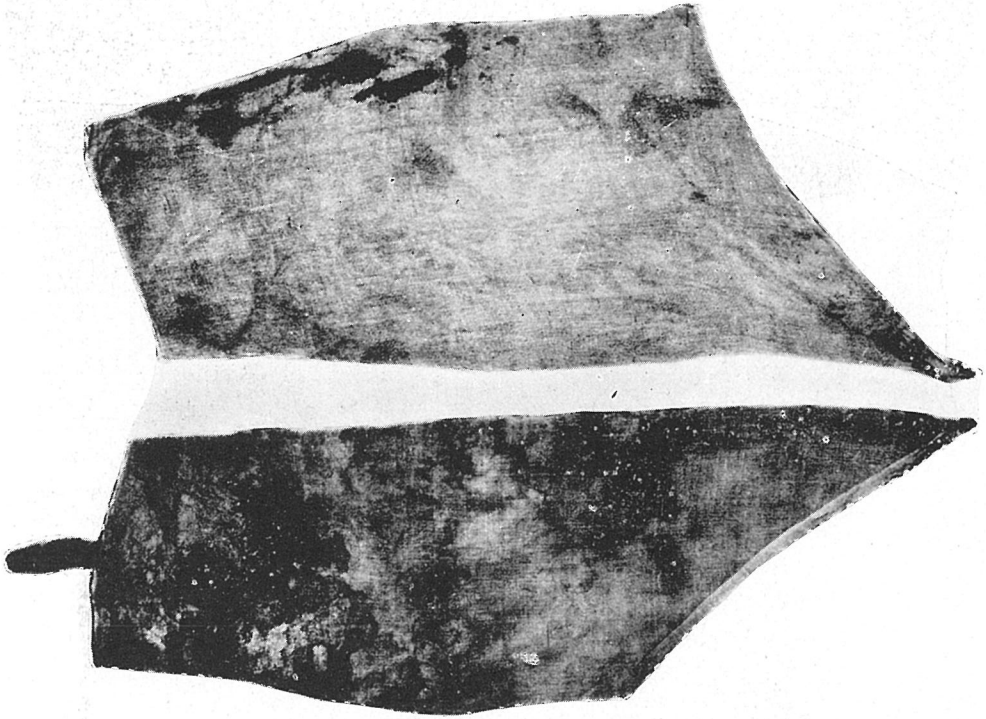
布袴



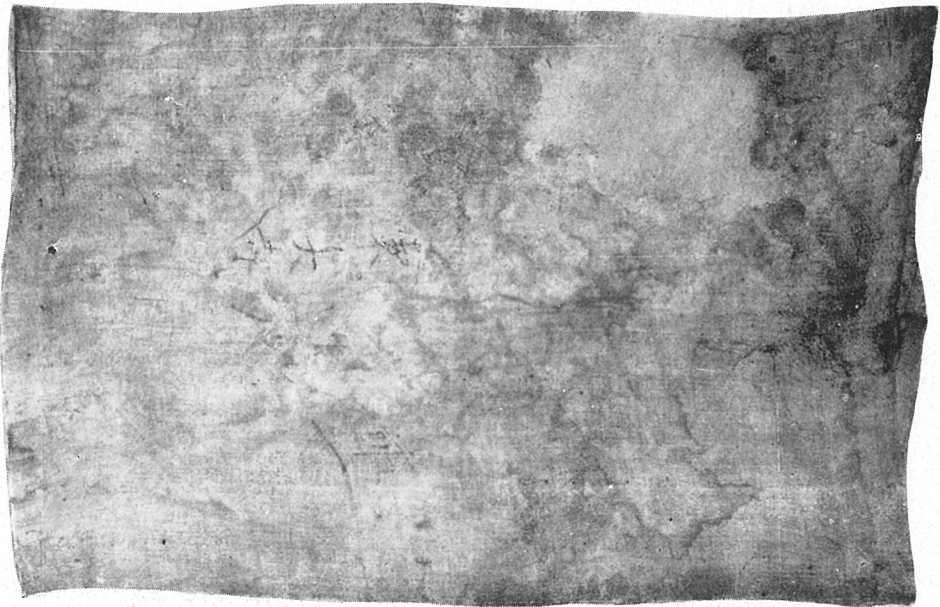
布 袍



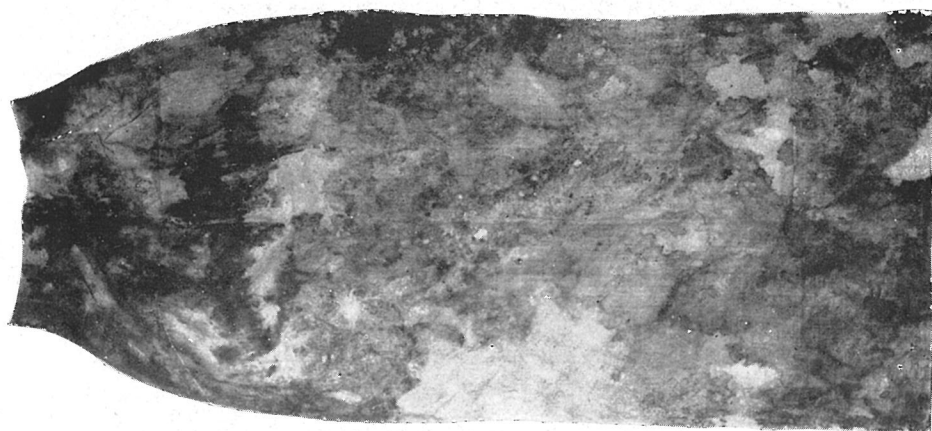
布 前 裳



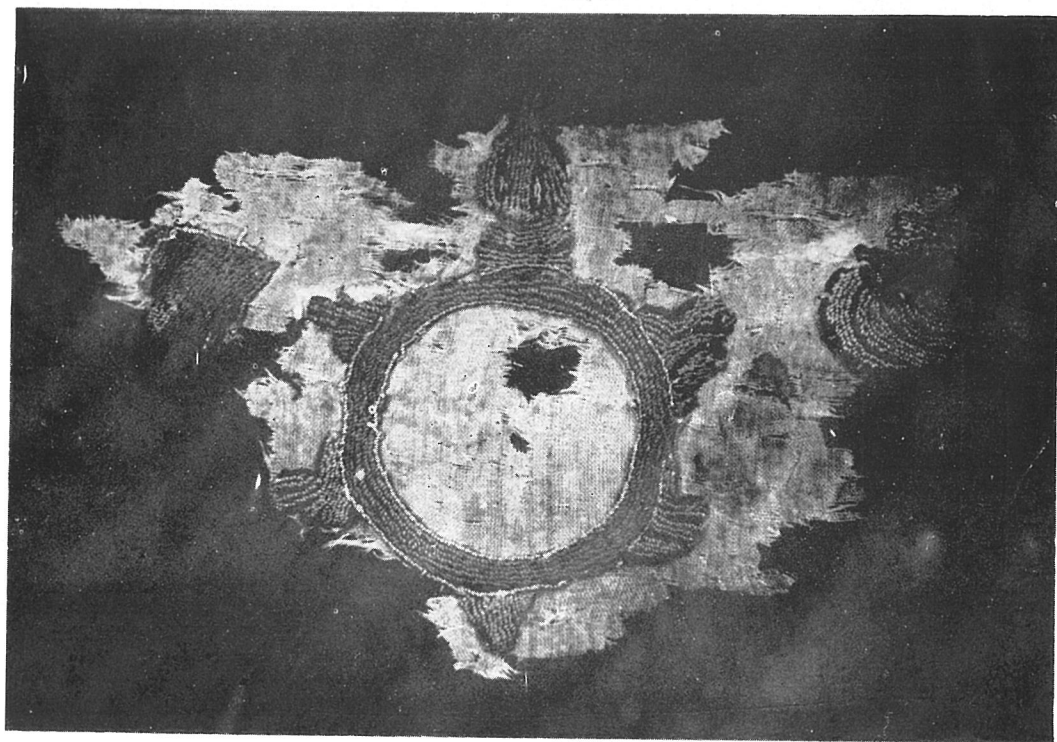
布接腰二隻



兩口布袋



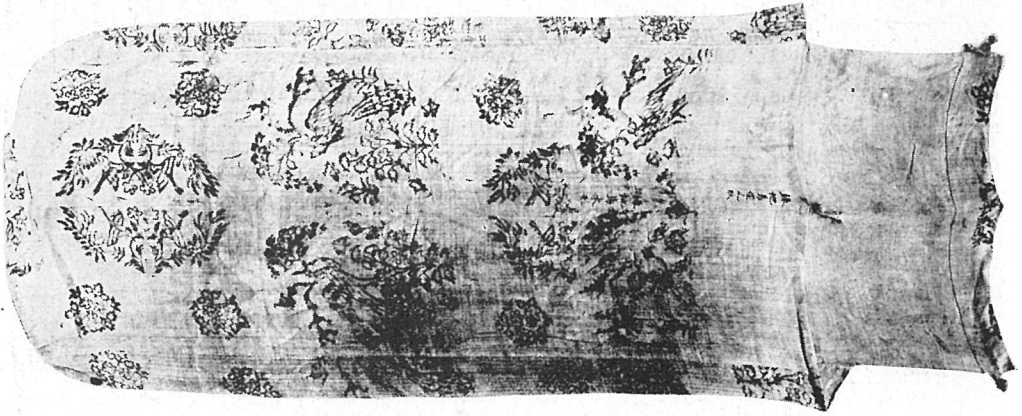
布蓋骨袋



天壽國曼茶羅刺繡斷片



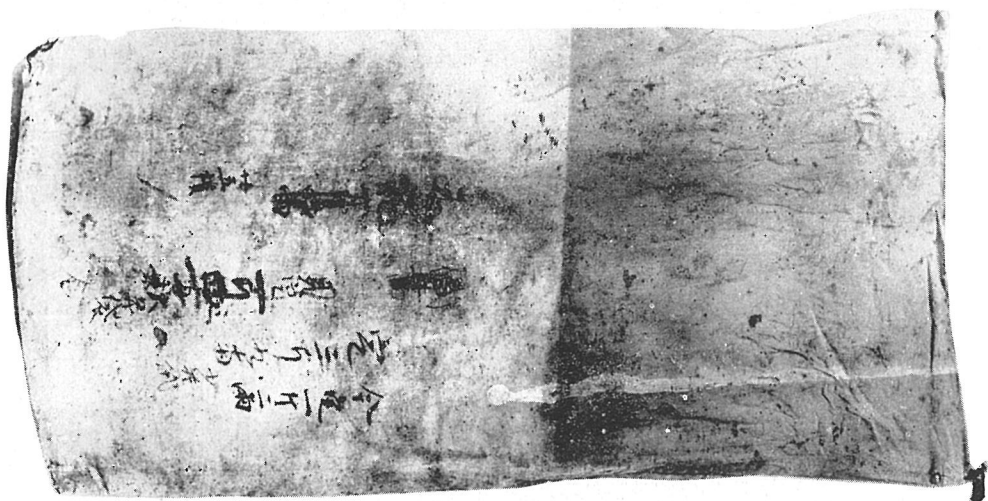
同 銘



措布屏風袋 (仁王会屏風)



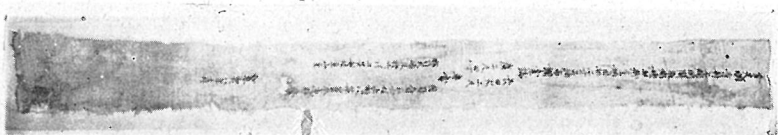
丹袋



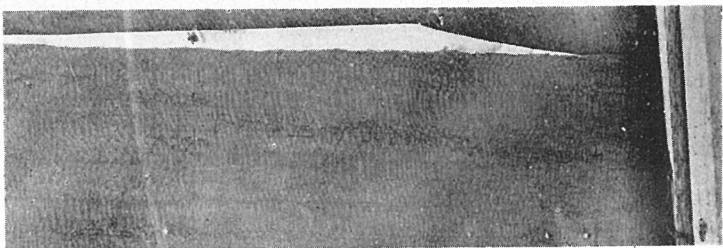
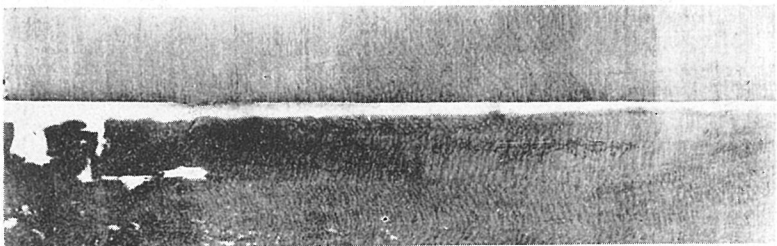
元花袋



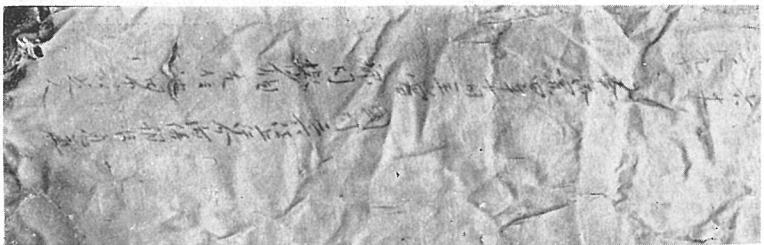
下總國調並唐布銘



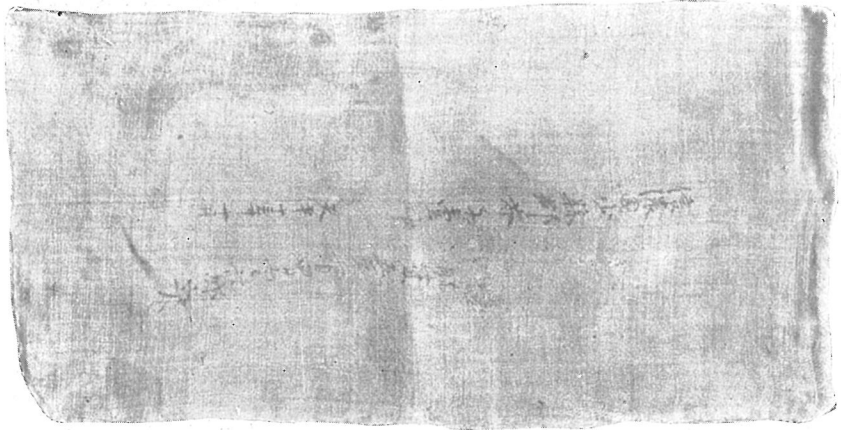
金光明寺封上總國細布調銘



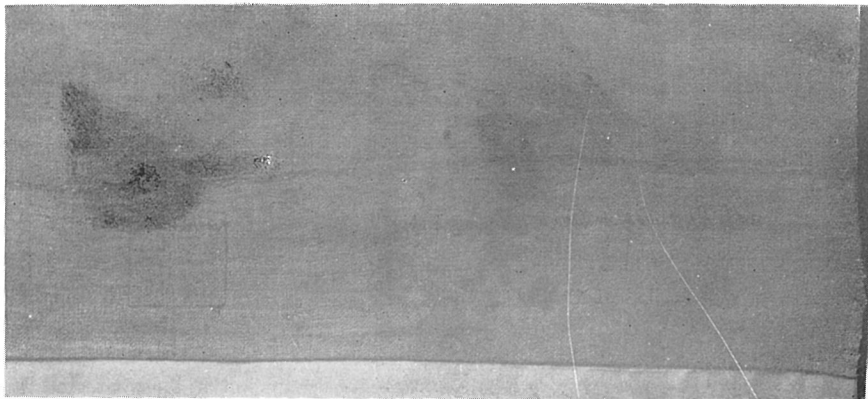
土左國調絶銘



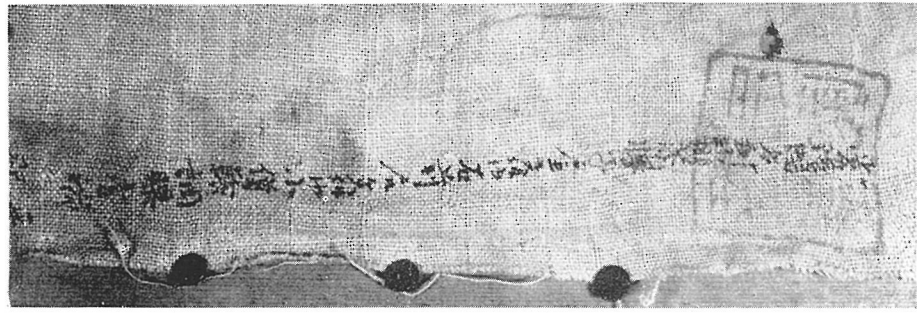
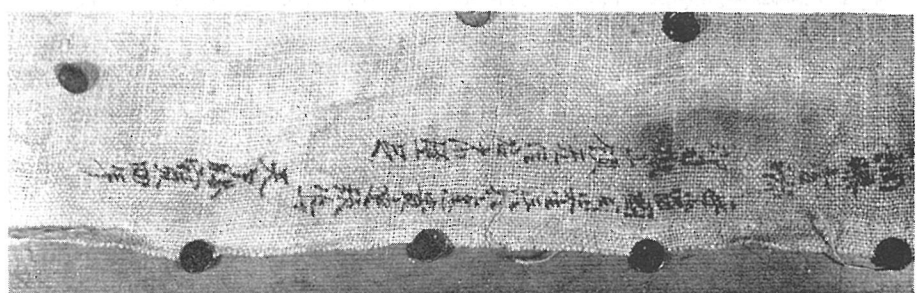
上野國調黄絶銘



信濃國芥子袋銘



佐渡國調布銘

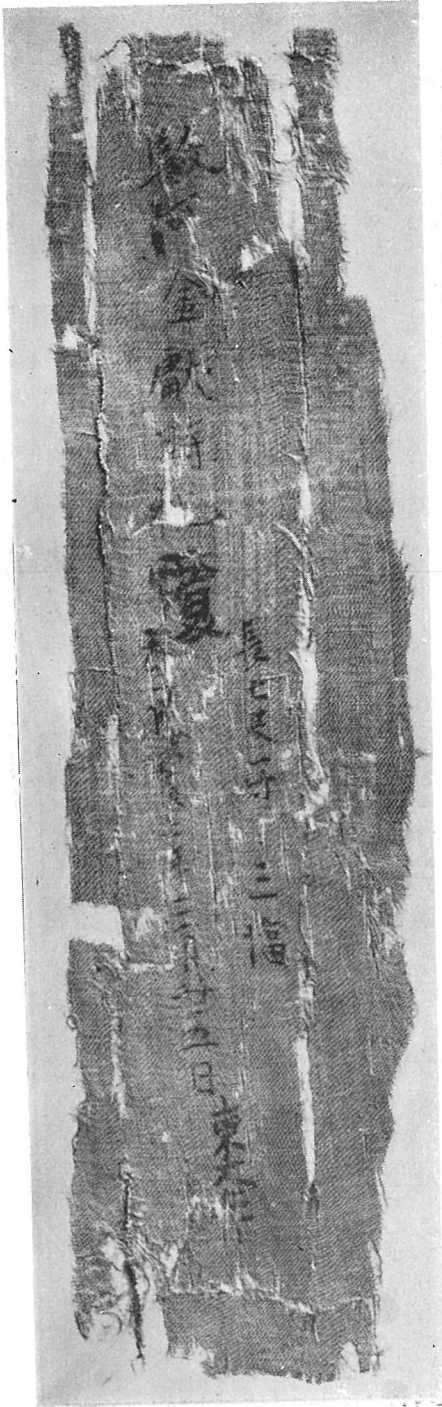


常陸國調曝布銘

越中國調白牒綿紙箋銘



駿河金獻時機覆銘



圖版 第十七 (正倉院古裂銘文集成)